

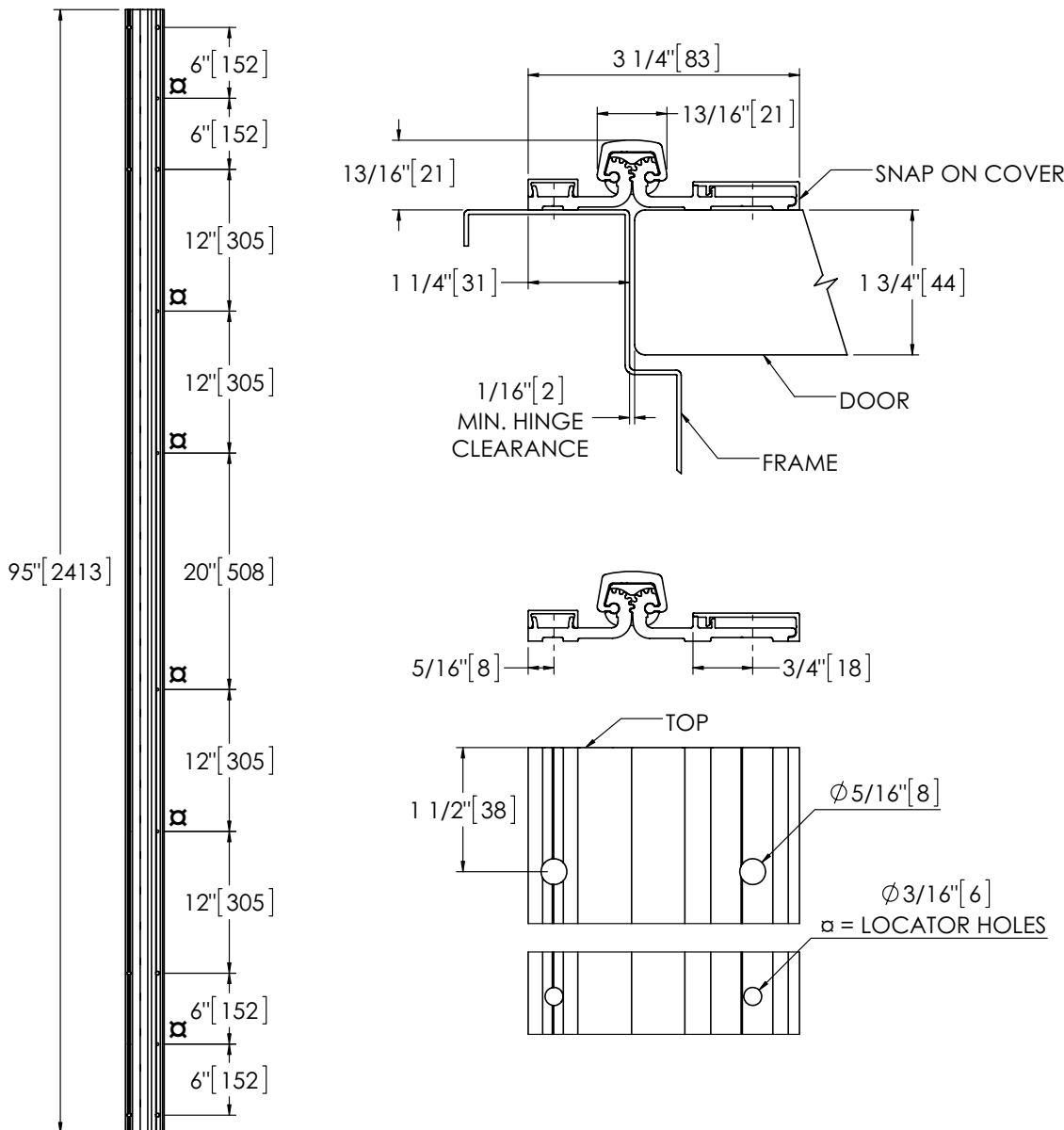
MCK-58HD 95" Full Surface Center Pivot HD

The global leader in door opening solutions

DO NOT SCALE
FOR ILLUSTRATION PURPOSES ONLY
DIMENSIONS: INCHES (MM)



LISTED
DOOR HINGE
76Y2



Template 658-18

Effective date: June 2018

Supersedes: All Previous

MCKINNEY Template Full Surface Continuous Aluminum Geared Hinge MCK-58HD is made to conform to this drawing.

Machine Screw Size:
Jamb Leaf: 5/8 x 1/4-20
Self-tapping Security Torx Screw
Jamb Leaf Snap Cover:
3/4 x 12-24 FHUC, Self Drilling Screw w/Special Washer
Door Leaf: 3/4 x 12 Pan Hd, Self Drilling Screw;
1/4-20 Shoulder Screws w/ Sex Nuts

Hinges are listed for fire applications up to 90 minutes without special preparation; for 3 hour openings using hollow metal doors and hollow metal frames on masonry/drywall, fire pins (supplied separately) must be used.

**** CAUTION ****
Due to Frame Installation Variations, Pre-drilling For Fasteners IS NOT Recommended