

We put the Medeco Maxum deadbolt up against a 4th degree black belt armed with crowbars, sledgehammers, drills, steel-toed boots and even a SWAT battering ram.



Medeco Maxum: Crushing the Illusion of Security

medeco
ASSA ABLOY



See for yourself how the Medeco Maxum deadbolt stands up to break-ins compared to common retail deadbolts by watching these videos!



To see the videos, visit www.medeco.com/deadbolt.

MEDECO U.S.: 3625 Alleghany Drive
P.O. Box 3075
Salem, Virginia 24153-0330
Customer Service: 1-877-633-3261

MEDECO Canada: 160 Four Valley Drive
Vaughan, Ontario L4K 4T9
Customer Service: 1-888-633-3264

LT-548130-10 REV A

ASSA ABLOY, the global leader
in door opening solutions

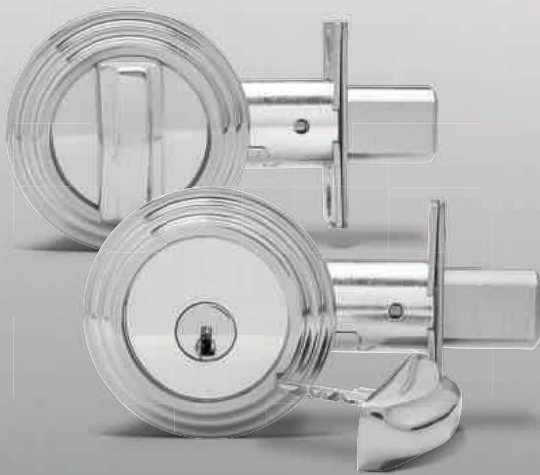
medeco
ASSA ABLOY

MAXIMUM CONTROL



Medeco's patented key control prevents keys from being copied without your knowledge. Your keys may only be duplicated by an authorized Medeco security professional.

MAXIMUM FLEXIBILITY



The removable thumbturn allows easy exit in emergencies, but it can also be removed for additional burglary protection when away.

PROTECTION AGAINST KICKING

Maxum's strike plate has a special design with 2" screws to anchor the strike directly to the building.

STANDS UP TO SAWING THROUGH THE BOLT

Maxum's bolt is made of hardened steel and is virtually impossible to saw through with a hacksaw.

SHIELDS AGAINST HAMMER ATTACKS

Maxum is made of solid brass and is secured with high-tensile steel bolts for maximum resistance.

PROTECTION AGAINST DRILL ATTACKS

Maxum is built with strategically placed hardened steel inserts to provide the utmost resistance to drilling.



BUILT TO RESIST PRYING WITH A CROWBAR

Maxum's hardened steel bolt is surrounded by heavy-gauge tubular steel to resist crowbar attacks.

GUARDS AGAINST WRENCHING OFF THE LOCK

Maxum's solid brass collar spins under pressure so a wrench is ineffective.

DISARMS THE LOCK PICK

Triple-locking action makes Medeco³ cylinders virtually pickproof.

KEYS CAN'T BE COPIED

Patented Medeco³ design makes it virtually impossible for keys to be copied without proper permission.



Medeco is the only known deadbolt currently tested to comply with FEMA 320 Windstorm assembly testing requirements, which includes protecting a door and frame from penetration by a launched 2x4 traveling at a velocity of 100 mph.