

Notes:

- Do not scale drawing.
- Left hand door shown for push side.
- All dimensions are given in inches and millimeters.
- Recommended thickness for reinforcements in hollow-metal doors and frames should provide a combined material thickness of .164 (4.2) MIN.
- This template information based upon use of 5 (127) maximum width butt hinges or 3/4 (19) offset pivots.

For door opening up to 110°

5700 Series Lower Energy Operator

**Drop Application for Stop (Push) Side of Door Installation
5700DAB**

Approved 2019-11-05

1-877-974-2255



ASSA ABLOY

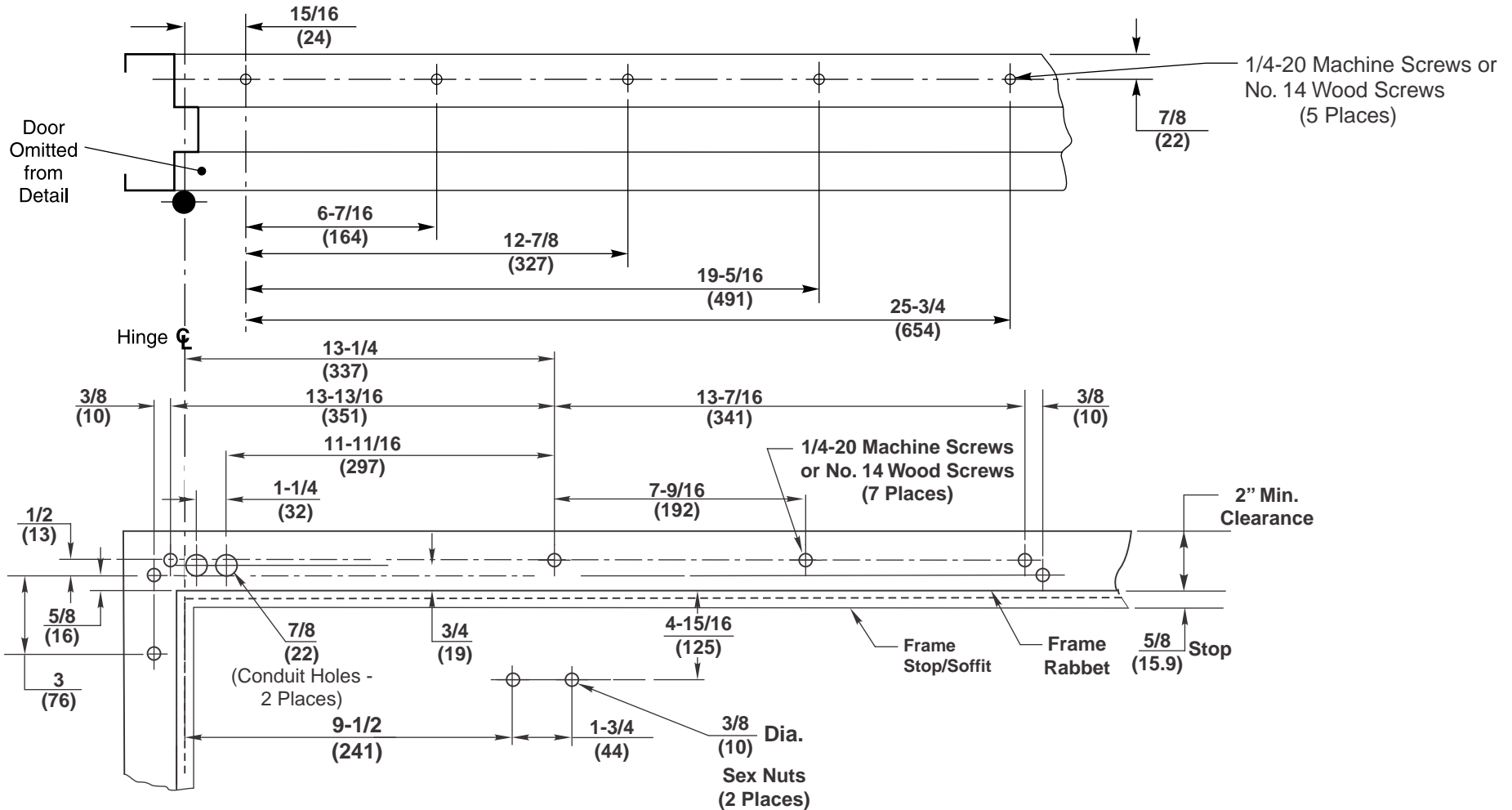
www.nortondoortcontrols.com

TEMPLATE NUMBER

80-7357-0001-020

DATE

02-16



Notes:

- Do not scale drawing.
- Left hand door shown for push side.
- All dimensions are given in inches and millimeters.
- Recommended thickness for reinforcements in hollow-metal doors and frames should provide a combined material thickness of .164 (4.2) MIN.
- This template information based upon use of 5 (127) maximum width butt hinges or 3/4 (19) offset pivots.

For door opening up to 180°

5700 Series Lower Energy Operator

**Drop Application for Stop (Push) Side of Door Installation
5700DAB-180**

Approved 2019-11-05

1-877-974-2255



ASSA ABLOY

www.nortondoortcontrols.com

TEMPLATE NUMBER

80-7357-0001-020

DATE

02-16