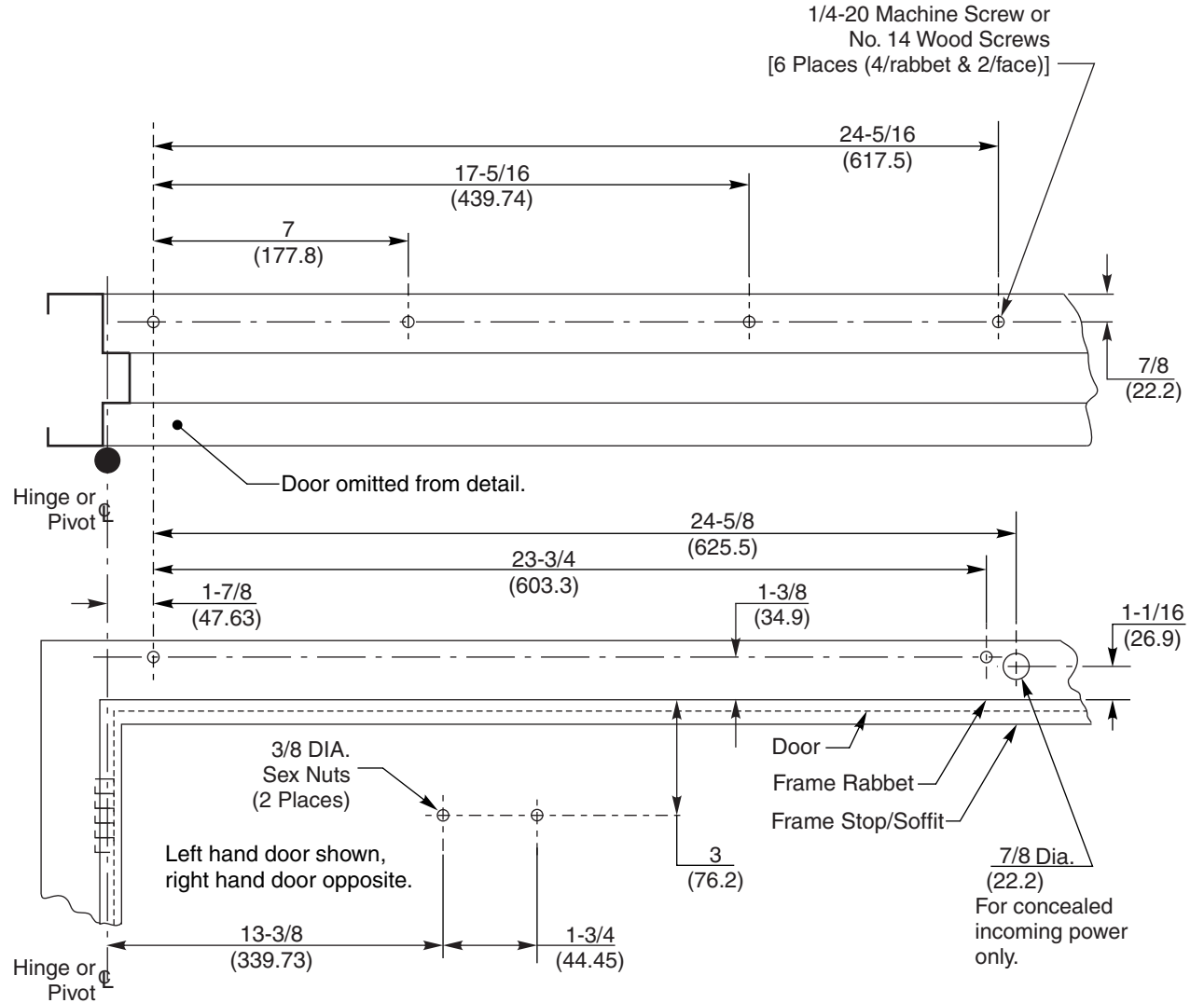


Notes:

- Do not scale drawing.
- Left hand door shown. Same dimensions apply for right hand door, measured from centerline of hinge or pivot.
- Template information based upon use of **4-1/2"** hinges or **3/4"** offset pivots.
- Dimensions are shown in inches and millimeters (mm).
- Hollow metal doors require channel or box-type reinforcement when thru-bolt mount is specified.
- Sex-nuts are required for wood or plastic faced fire-door installations.
- Minimum thickness recommended for reinforcements in hollow metal doors and frames is .1046 (2.66) unless noted otherwise.
- Minimum ceiling clearance for closer unit is 2" (50.8).
- Maximum hinge side frame reveal is 7" (180).



Preparation for Fasteners			
	Fasteners	Door or Frame	Drill-Sizes
Standard	1/4" - 20 machine screw	Metal	Drill: #7 (0.201" dia.) Tap: 1/4" - 20
	Sleeve nuts and bolts	Hollow Metal	9/32" (7 mm) through; 3/8" (9.5 mm) door face opposite to closer
Aluminum or Wood		3/8" (9.5 mm) through	
Optional	Through-bolts and grommet-nuts	All	9/32" (7 mm); 3/8" (9.5 mm) dia. x 3/8" (9.5 mm) deep on door opposite to closer

Model	Degree of Open	Reveal
712X SZ 722X	100° Max	2-3/4" - 7" (69.9 - 177.8)

Norton Series 7100SZ or 7200

Combination Door Closer-Holder and Releasing Device with Multi Point Selective Hold Open
 Double Lever Closer Arm Drop Application 100° Max Opening.
 Stop (Push) Side of Door Installation

1-877-974-2255



ASSA ABLOY

www.nortondoortcontrols.com

TEMPLATE NUMBER	DATE
7372-1371	07/12