

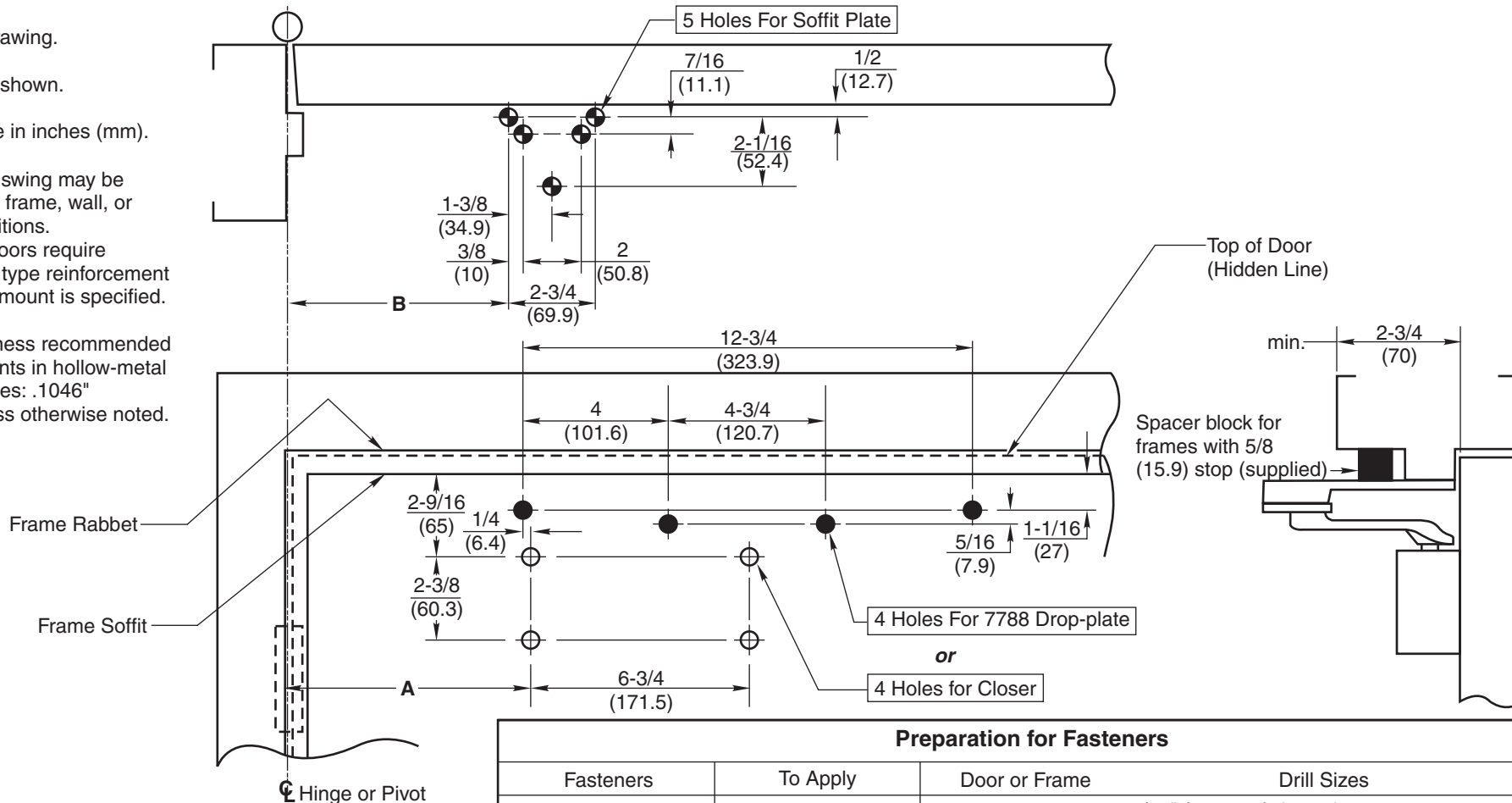
Do not scale drawing.

Left hand door shown.

Dimensions are in inches (mm).

Caution: Door swing may be limited by door, frame, wall, or hardware conditions.
Hollow-metal doors require channel or box type reinforcement when thru-bolt mount is specified.

Minimum thickness recommended for reinforcements in hollow-metal doors and frames: .1046" (2.66mm) unless otherwise noted.



Opening	Dim. "A"		Dim. "B"	
	inches	mm	inches	mm
To 100°	8-3/4	222	9-1/4	235
101° to 130°	7-1/4	184	7-3/4	197
131° to 150°	6-1/4	159	6-3/4	171
151° to 180°	5-1/4	133	5-3/4	146

Preparation for Fasteners			
Fasteners	To Apply	Door or Frame	Drill Sizes
Sex-nuts and bolts	Closer or drop-plate	Hollow-Metal	9/32" (7.00mm) through
		Aluminum or Wood	3/8" (9.50mm) door-face opposite to closer
Self Drill Screws	Soffit-plate	Wood	3/16" (4.30mm)
		Aluminum	No Drill required
		Metal	drill: #7 (.201" dia.) tap: 1/4-20
Through-bolts and grommet-nuts	Optional	All	9/32" (7.00mm) through; 3/8" (9.50mm) dia. x 3/8" (10mm) deep, door face opposite to closer

**PR7500, PR7500H, PR7700, or PR7700H Series Door Closers
With or Without 7788 Drop Plate
Parallel Rigid Installation With Non Hold Open or Hold Open**



ASSA ABLOY

www.nortondoorcontrols.com

TEMPLATE NUMBER

7377-0251

DATE

02-15