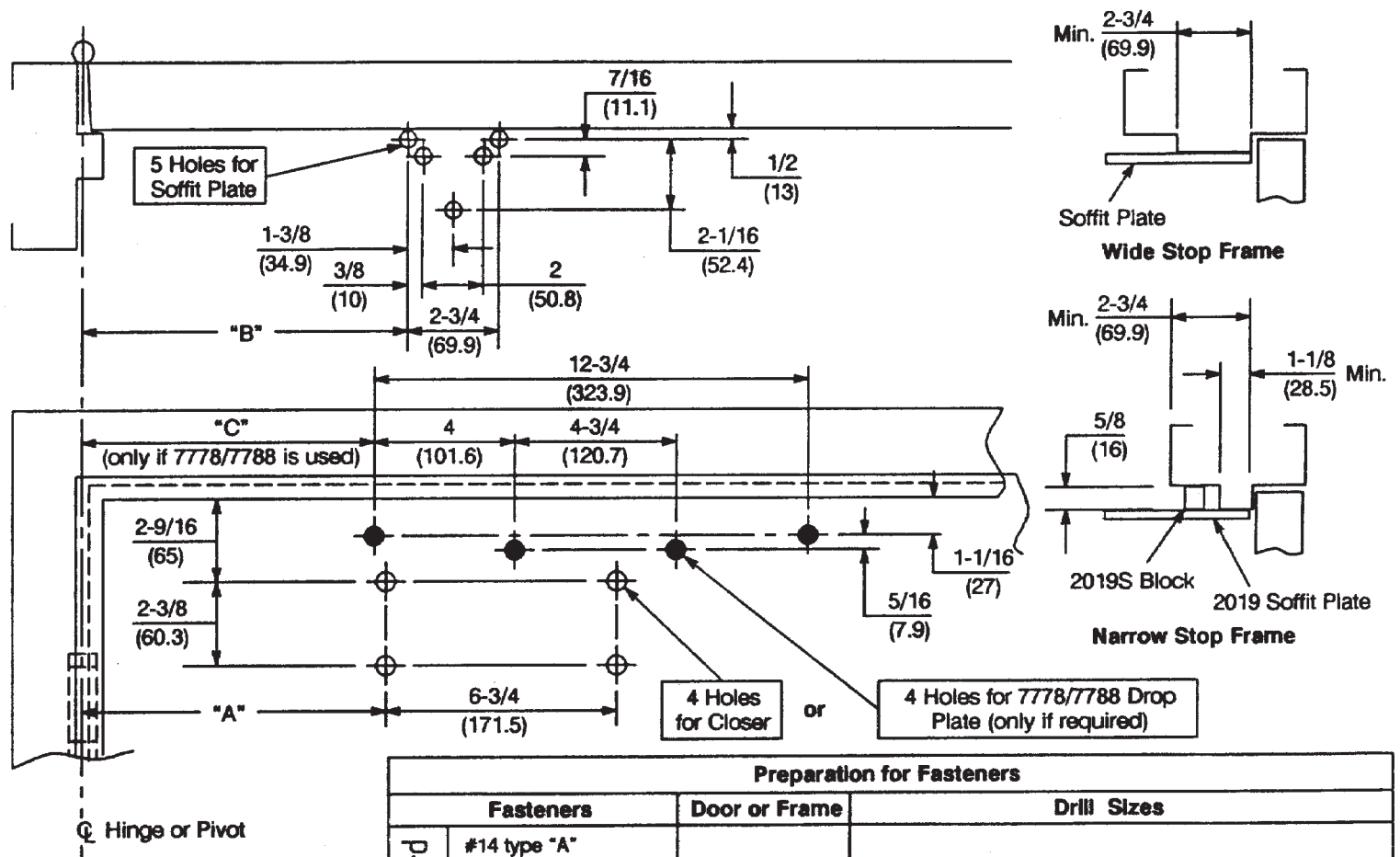


**Caution:** Door swing may be limited by door, frame, wall or hardware conditions.

**Notes:**

1. Do not scale drawing.
2. Left hand door shown.
3. Dimensions are in inches (mm).
4. Hollow metal doors require channel or box type reinforcement when thru bolt mount is specified.
5. Minimum thickness recommended for reinforcements in hollow metal doors and frames: .1046" (2.66mm) unless otherwise noted.



| Door Opening | Dim. "A"    | Dim. "B"    | Dim. "C"    |
|--------------|-------------|-------------|-------------|
| To 100°      | 8-5/8 (219) | 9-1/8 (232) | 8-3/8 (213) |
| 101° to 120° | 7-7/8 (200) | 8-3/8 (213) | 7-5/8 (194) |
| 121° to 180° | 6-3/4 (171) | 7-1/4 (184) | 6-1/2 (165) |

Maximum hinge width 5" (127mm) for doors swinging beyond 150°.

| Preparation for Fasteners |  |                  |   |
|---------------------------|--|------------------|---|
|                           | Fasteners  | Door or Frame    | Drill Sizes   |
| Standard                  | #14 type "A" S.M. screw<br>Arm: 1-1/4" (32mm)<br>Closer: 2-3/4" (70mm) | Wood             | 7/32" (5.50mm)  |
|                           | 1/4-20 machine screw   | Metal            | drill: #7 (.201")<br>tap: 1/4-20  |
| Optional                  | Six nuts and bolts   | Hollow Metal     | 9/32" (7.00mm) thru;<br>3/8" (9.50mm) on door or transom face opposite to closer                        |
|                           |  | Aluminum or Wood | 3/8" (9.50mm) thru  |
|                           | Thru bolts and grommet nuts  | All              | 9/32" (7.00mm) thru; 3/8" (9.50mm) dia. x 3/8" (9.50mm) deep on door or transom face opposite to closer |

**PR7570 and PR7770 Series Security Door Closer  
With or Without 7788 Drop Plate or  
Parallel Rigid Arm Non-Hold Open Installation**



ASSA ABLOY

www.nortondoorcontrols.com

TEMPLATE NUMBER

**7377-0621**

DATE

**07-08**