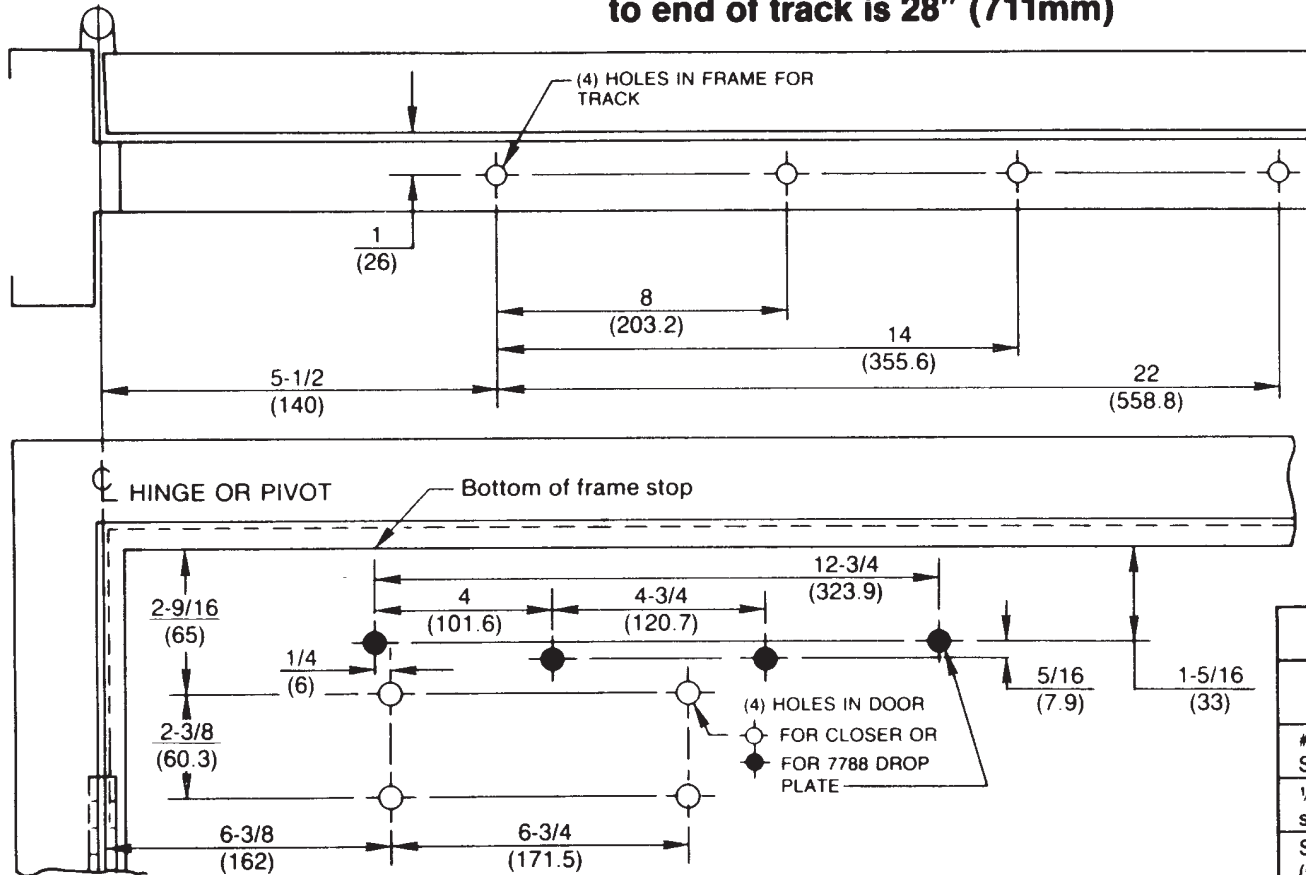


IMPORTANT: From centerline of pivot point to end of track is 28" (711mm)



- Left hand door shown.
- Do not scale drawing.
- Dimensions are given in inches (mm.)
- Maximum door opening:
 - Non Hold Open with buffer assembly in track - 100°
 - Non Hold Open without buffer assembly in track - 125°. Auxilliary stop required.
 - Hold Open - 100°

Preparation for Fasteners

Fasteners	Door or Frame	Drill-Sizes
#14 type "A" S.M. screw	Wood	7/32" (5.5mm)
1/4"-20 machine-screw	Metal	drill: #7 (.201") tap: 1/4"-20
Sex-nuts and bolts (Optional)	Hollow-Metal	9/32" (7.00mm.) through; 3/8" (9.50mm.) door-face opposite to closer
	Aluminum or Wood	3/8" (9.50mm.) through
Through-bolts and grommet-nuts (Optional)	All	9/32" (7.00mm.) through; 3/8" (9.50mm.) dia. x 3/8" (10mm.) deep door-face opposite to closer

PS7700ST/PS7500ST Series Non Hold Open Door Closer
PS7700ST-H/PS7500ST-H Series Hold Open Door Closer
Push Side Slide Track Application
With or Without 7788 Drop Plate



ASSA ABLOY

www.nortondoortcontrols.com

TEMPLATE NUMBER

7377-0520

DATE

07-08