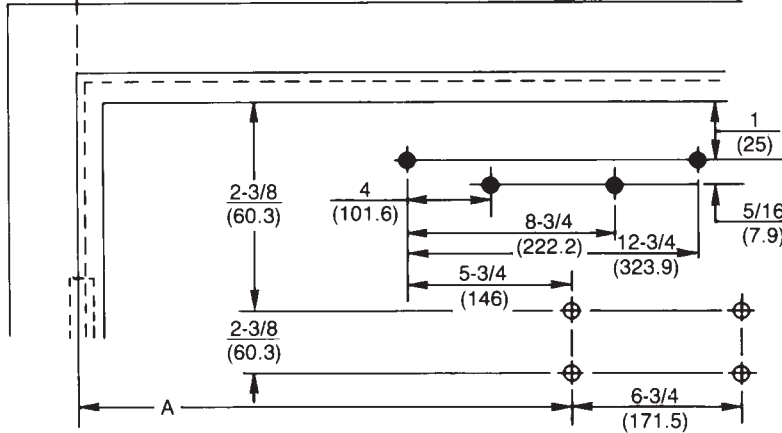
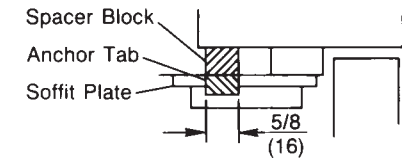


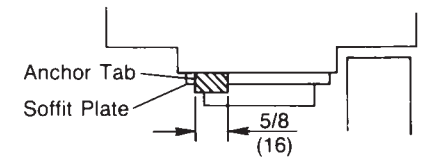
◆ 7788 drop plate mounting holes only



**Narrow Soffit Frame**



**Wide Soffit Frame**



**Notes:**

- Do not scale drawing.
- All dimensions shown in  $\frac{\text{inches}}{(\text{mm.})}$ .
- Left hand door shown.
- Caution: Hollow metal doors require channel or box type reinforcement.

Preparation for Fasteners			
Fasteners	Application	Door or Frame	Drill Sizes
Sex nuts and bolts	Closer, Drop plate	Hollow Metal	9/32" (7.00mm.) through 3/8" (9.50mm.) door face opposite to closer
		Aluminum or Wood	3/8" (9.50mm.) through
#14 x 1-1/4" (32mm.) type "A" S.M. screws	Soffit-plate 6190 Bracket	Wood	3/16" (4.30mm.)
1/4-20 machine screw		Metal	drill: #7 (.201" dia.) tap: 1/4-20
Through bolts and grommet nuts	Optional	All	9/32" (7.00mm.) through 3/8" (9.50mm.) dia. x 3/8" (10mm.) deep, door face opposite to closer

Door Opening Angle		Dimensions*							
Hold Open**	Dead Stop	Butts and Offset Pivots				Center Pivots			
		Dimension A		Dimension B		Dimension A		Dimension B	
		Inches	mm.	Inches	mm.	Inches	mm.	Inches	mm.
85°	90°	12¾	324	12⅞	327	13¾	349	13⅞	352
90°	95°	12	305	12⅞	308	12⅞	327	13	330
95°	100°	11½	292	11⅞	295	12¼	311	12⅞	314
100°	105°	10⅞	276	11	279	11⅞	295	11¾	298
105°	110°	10½	267	10⅞	270	11⅞	283	11¼	286
110°	115°	10	254	10⅞	257	10¾	273	10⅞	276

\* "A" and "B" dimensions measured from centerline of hinge or pivot.  
 \*\* Door must be free to swing up to 5° beyond hold open position.

**Unitrol® with 6191 Reinforcing Kit  
 Series UNI-7500 & UNI-7700  
 Doors 33"-41" (0.85-1.00m) Wide**

**Parallel Arm Installation Template  
 Stop Only or Hold Open Unitrol®  
 Backcheck or Delayed Action Door Closer  
 With or Without 7788 Drop Plate**



ASSA ABLOY

www.nortondoorcontrols.com

TEMPLATE NUMBER	DATE
<b>7377-1358</b>	<b>07-08</b>