

RollerMate™ Caster

for Extra Wide Doors

Wood Door Preparation

Installation Instructions

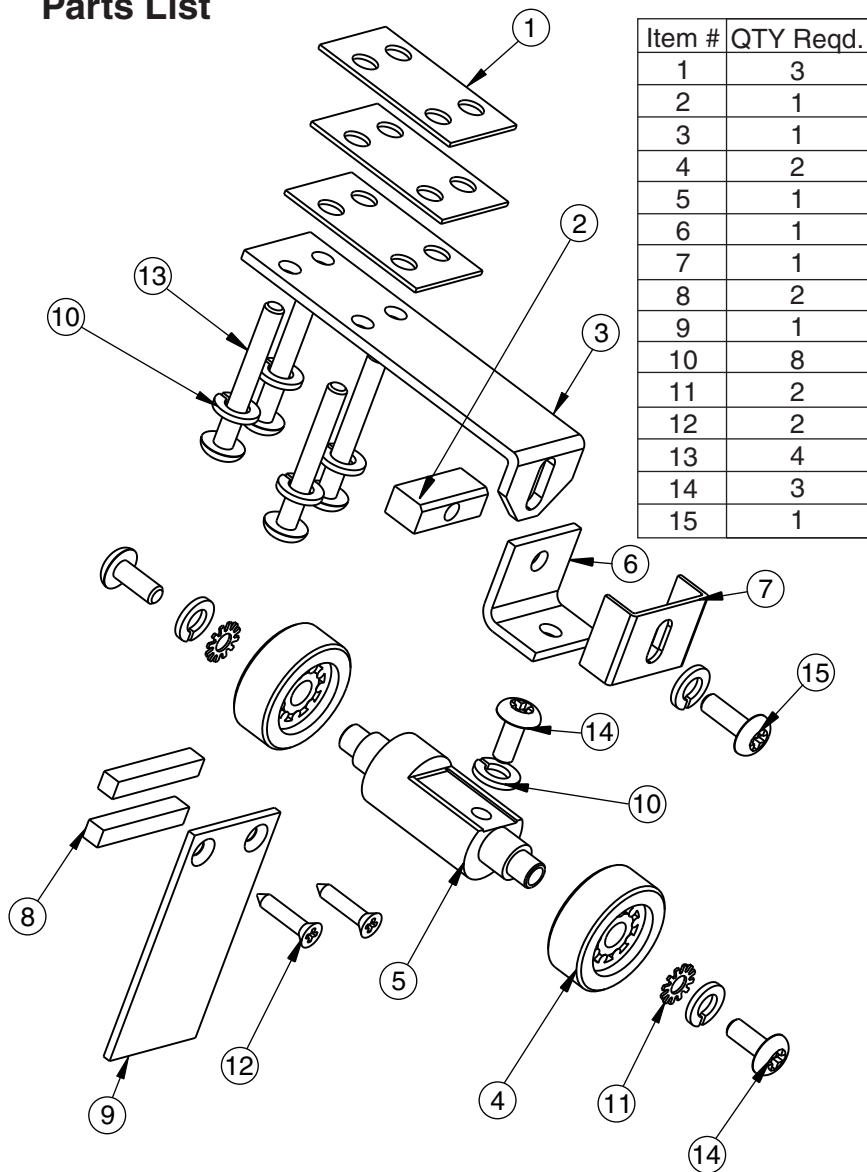
⚠ WARNING

This product can expose you to lead which is known to the state of California to cause cancer and birth defects or other reproductive harm. For more information go to www.P65warnings.ca.gov.

Wood Door Thickness: 2-1/4" (57.2) Min.
 Door Weight: 1,000 lbs. Max. for Double Roller
 3-1/2" (88.9) Thick Bottom Rail Required

US Patent 7159278 exp 2/25

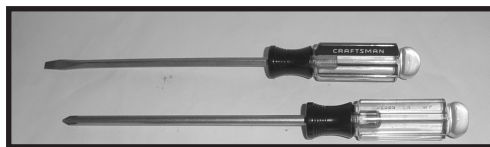
Parts List



Item #	QTY Reqd.	Part #	Description
1	3	10600-003	Shim Plate
2	1	10600-004	Threaded Block
3	1	10600-005	Spring Plate
4	2	10600-006	Caster
5	1	10600-022	2 Wheel Hub
6	1	10600-023	Bracket
7	1	10600-024	Clamp
8	2	10600-026	Gasket
9	1	10600-027	End Cap
10	8	1200301-02504	1/4 Lockwasher
11	2	1200901-02502	1/4 Star Washer
12	2	01301016-603	10 x 1 FHPSMS-STL-SLB
13	4	02321432-629	14 x 2 PHPSMS-SS-US32
14	3	04364006	1/4-20UNC x 3/8 SS-TRHPMS
15	1	02344012-602	1/4-20UNC X 3/4 PNHDSMS-CAD

Tools Required (not included)

- Flat Blade Screwdriver
- Phillips Screwdriver



Door Preparation

(Door is independently hung)

Step 1

Determine clearance between door and floor as shown in Figure #1. Recommended clearance is 3/16" (4.8). Use .060" (1.5) thick shim plates provided in kit to compensate for large gaps between door and floor.

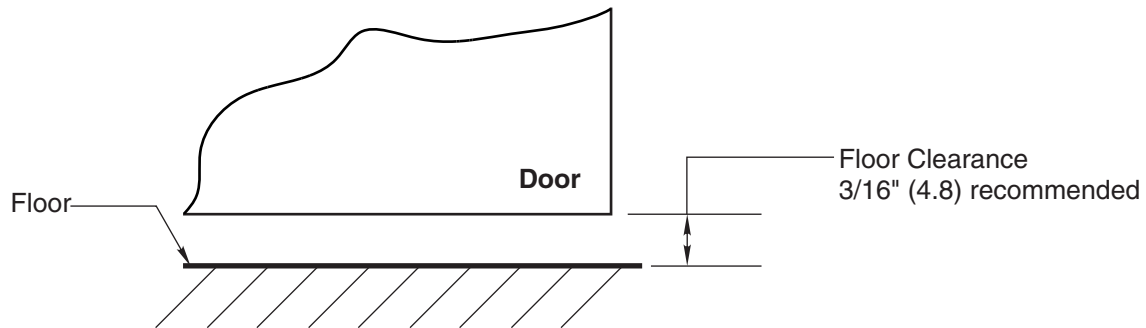


Figure 1: Clearance between door and floor.

Step 2: Wood Door Cutout

Minimum bottom rail height – 3-1/2" (88.9). Minimum door thickness – 2-1/4" (57.2). Mortise the bottom of the wood door per the dimensions on template MS120020. Do not remove skins of door, except at edge of door.

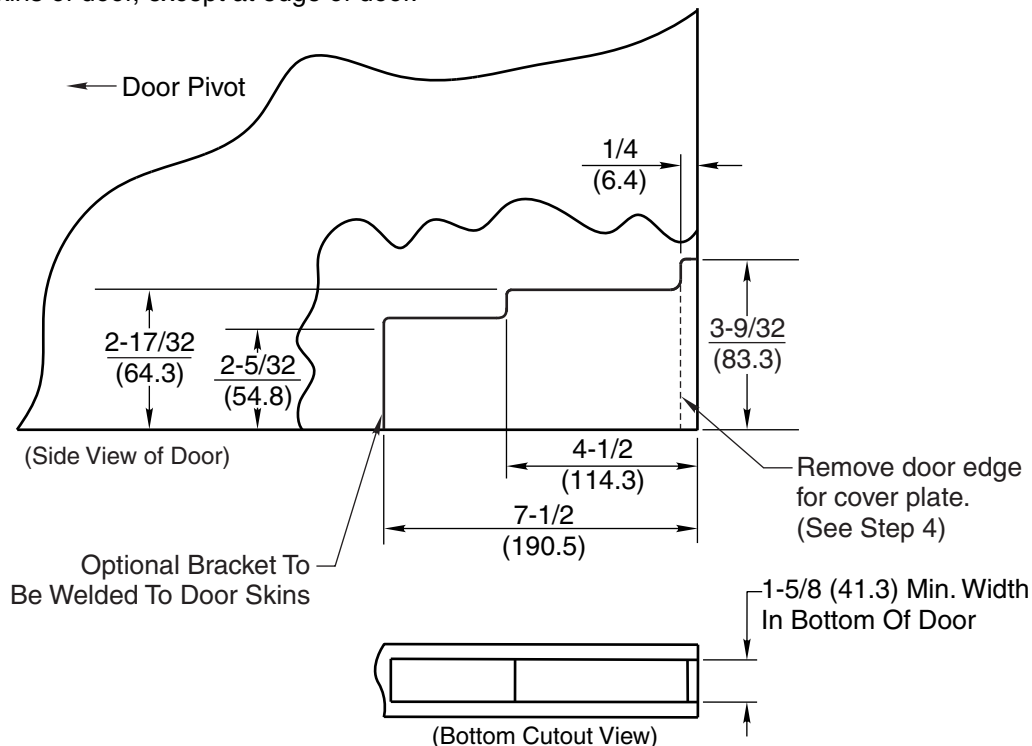


Figure 2: Mortise dimensions at bottom of wood door.

Step 3: Wood Door Cutout, (Hole Locations)

Drill holes in wood door per the dimensions in Figure 3 or refer to template MS120020.

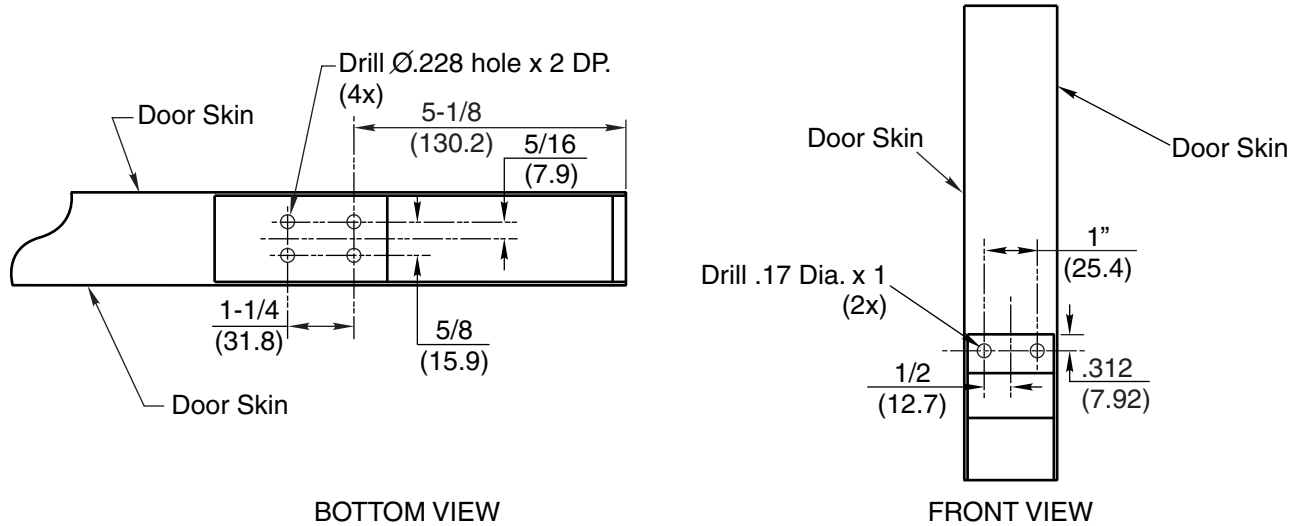


Figure 3: Location of holes in bottom of wood door.

Step 4: Wood Door Cutout, (Edge Slot Cutout–No Front Cover Plate)

If Front Cover Plate is not desired, cut a slot in the skin at the edge of door, per the cutout dimensions in Figure 4.

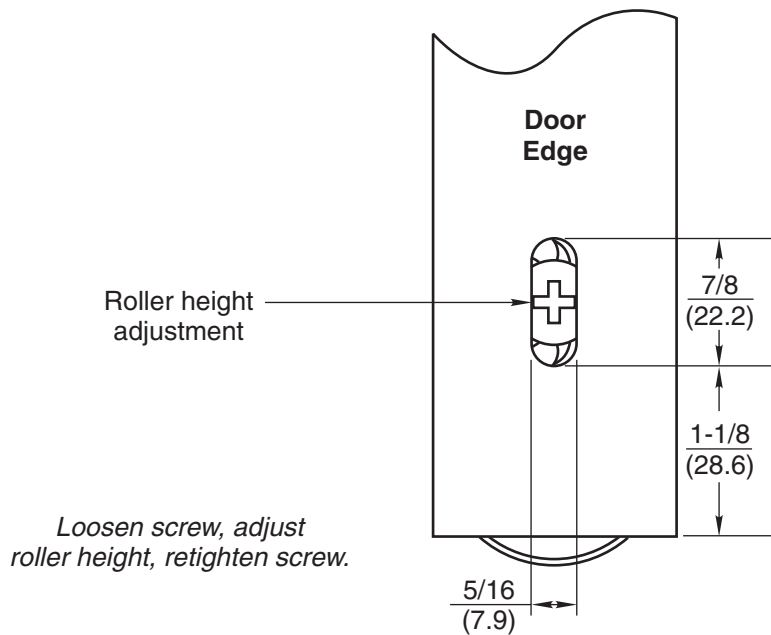


Figure 4: Slot cutout dimensions in skin at edge of door.

The ASSA ABLOY Group is the global leader in access solutions. Every day we help people feel safe, secure and experience a more open world.

Door Preparation

Step 5:

Attach Roller Assembly to bottom of door. Use shim plates if necessary.

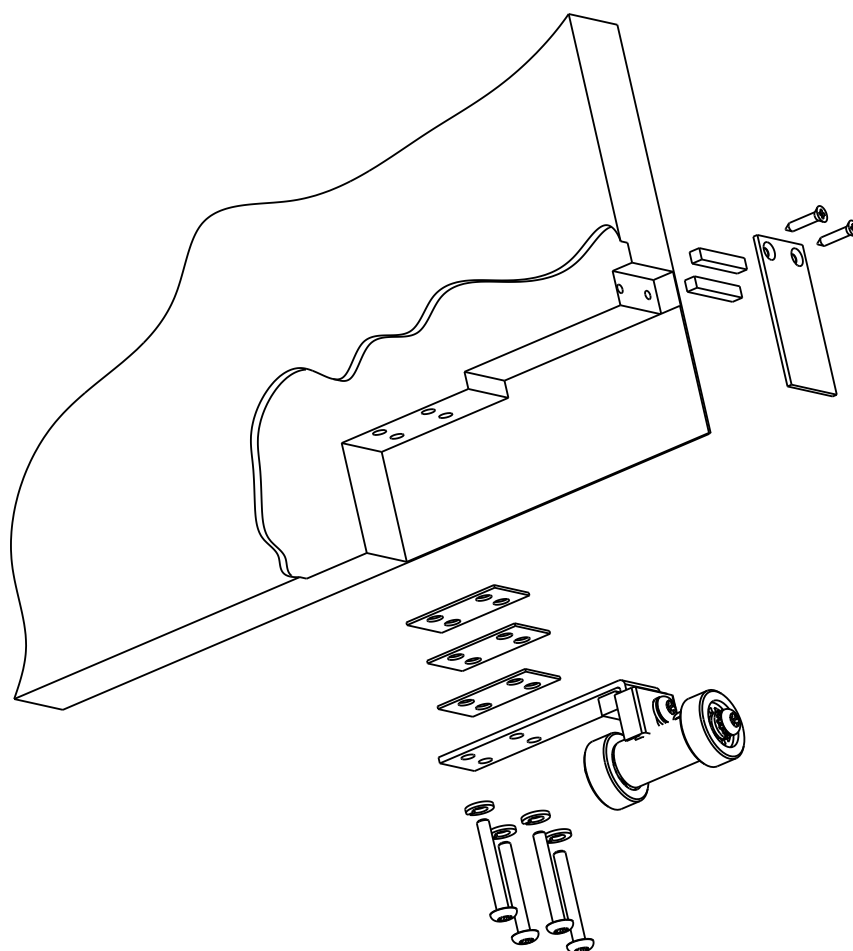


Figure 5: Roller Assembly at bottom of door.