

Notes:

1. Do not scale drawing.
2. Right hand shown.
3. It is the door and frame manufacturers' responsibility to check the hardware schedule and prepare the doors and frames.
4. Pivots drilled for 1/4-20 x 3/4" FHMS or #14 x 1-1/2" FHWS.
5. Suitable reinforcing by others.
6. All dimensions are in inches.

**176 Pivot Set
Center Hung**

RIXSON

ASSA ABLOY

www.rixon.com

TEMPLATE NUMBER	REV	DATE
IS-176	3	05-24

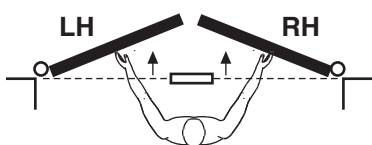
Approved 2024-05-24

DO NOT SCALE DRAWING

176 Pivot Set

Center Hung

Determine Hand of Door



Installation Instructions

1. LOCATE PIVOT

- A. Measure 1-5/16 (33.3) out from door jamb on centerline of door. This is the location of spindle center.
- B. Round heel edge and prepare door for 1/16 (1.6) MIN. Clearance thru entire opening.

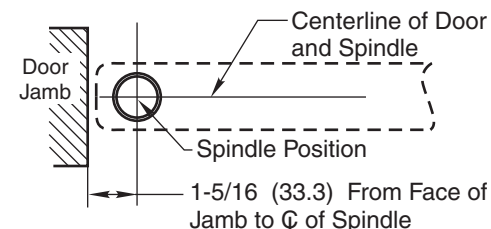
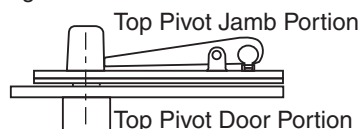


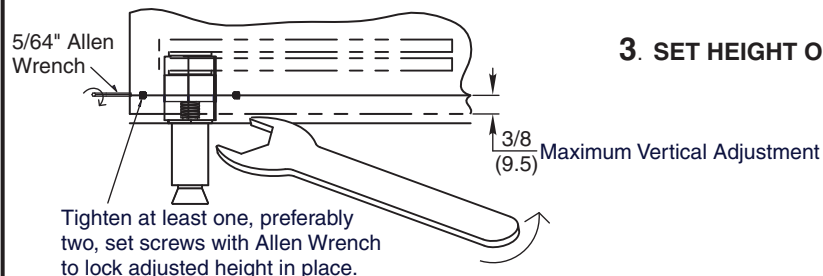
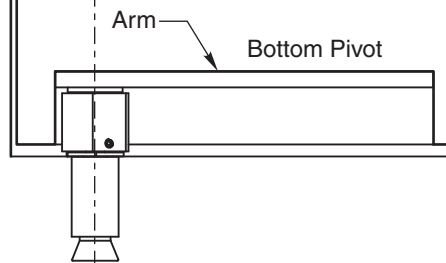
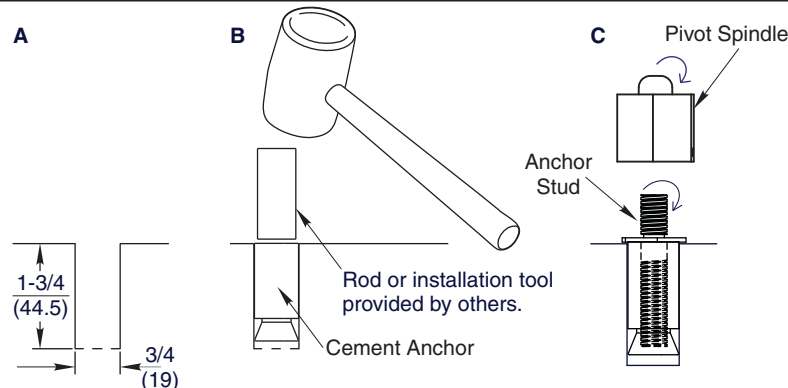
Figure 1



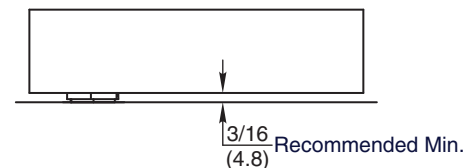
IMPORTANT
Use plumb line to make sure that centerline of Top Pivot aligns with centerline of Bottom Spindle.

2. SET BOTTOM PIVOT.

- A. Drill hole in line with top pivot.
- B. Using a mallet and tool, drive the cement anchor down until set into hole and flush with or just beneath floor.
- C. Screw the anchor stud into the cement anchor then screw the pivot spindle onto the anchor stud. Height can be adjusted after installation.



3. SET HEIGHT OF BOTTOM PIVOT.

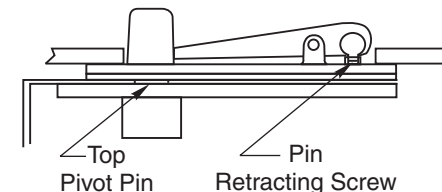


4. INSTALL TOP PIVOT AND PIVOT ARM.

- A. Install door portion of pivot per template.
- B. Install jamb portion of top pivot in frame per template.
- C. Centerline of pivot should align with centerline of bottom spindle. Use a plumb line to assure accuracy.
- D. Mortise bottom of door to receive arm (Mortise varies with required clearance refer to template.)

5. HANG DOOR

Set arm, mortised in door, on pivot spindle and engage the top pivot pin by turning pin retracting screw clockwise.



**176 Pivot Set
Center Hung**

RIXSON
ASSA ABLOY

www.rixson.com

TEMPLATE NUMBER	REV	DATE
IS-176	3	05-24

Approved 2024-05-24