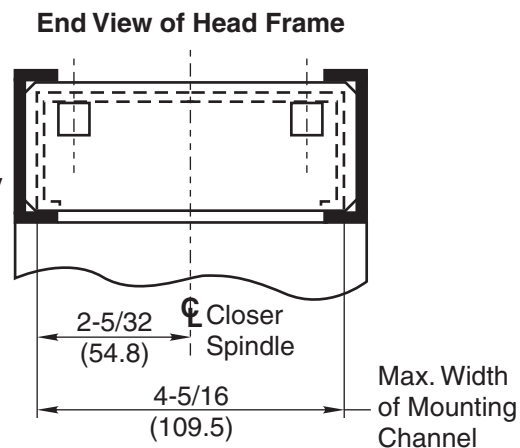
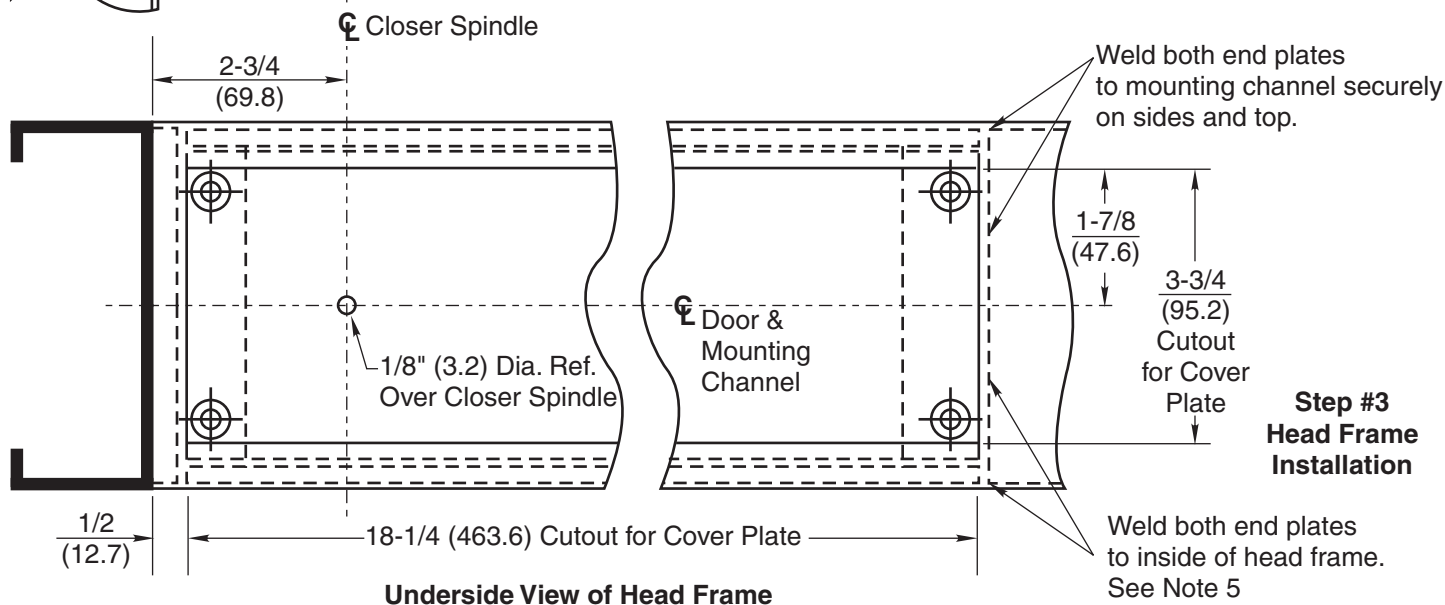
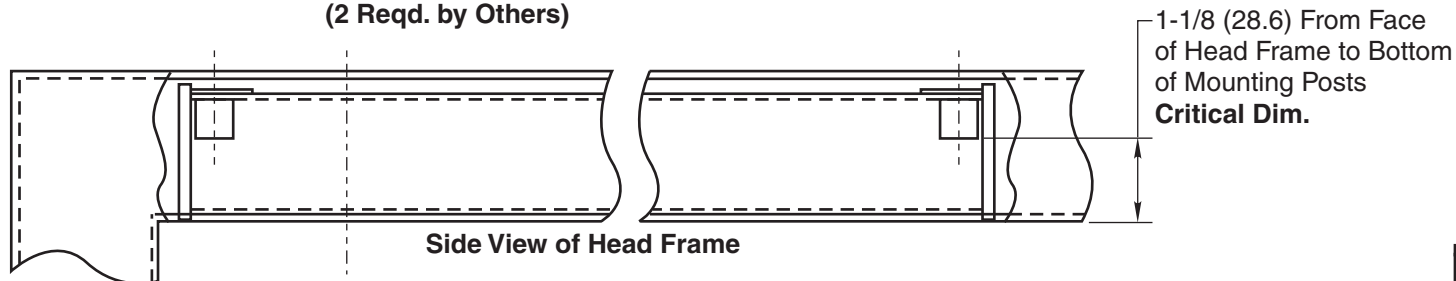
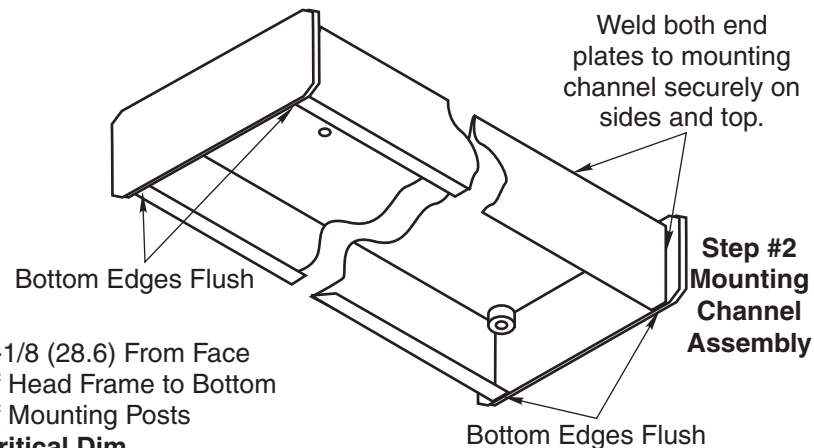
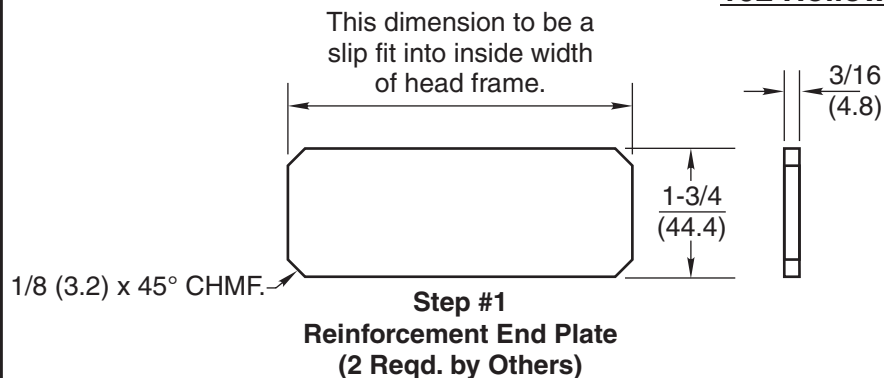


## 192 Hollow Metal Mounting Channel Center Hung



- NOTES:**
1. Do not scale drawing.
  2. Right hand door shown.
  3. Minimum width head frame 2" x 5-1/2" (50.8 x 139.7) 16 ga. max.
  4. All dimensions given in inches (mm).
  5. Channel must be installed prior to jobsite installation of frame.

## 192 Hollow Metal Mounting Channel Center Hung



**ASSA ABLOY**

|                 |          |              |
|-----------------|----------|--------------|
| TEMPLATE NUMBER | REV      | DATE         |
| <b>OC60000</b>  | <b>3</b> | <b>01/22</b> |