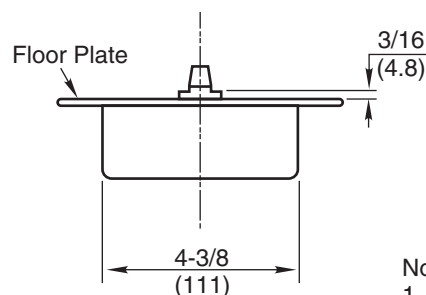
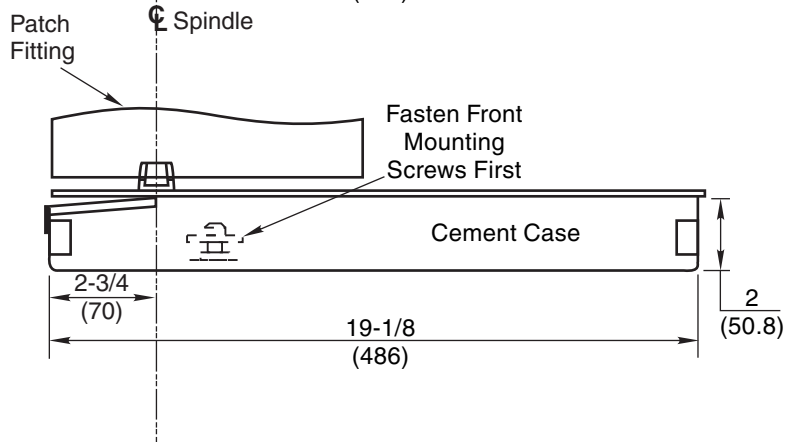


**WITH THRESHOLD**  
 Set Cement Case Surface of Finished Floor  
 See Note 3



**WITH FLOOR PLATE**  
 Set Cement Case Flush with Finished Floor

**Notes:**

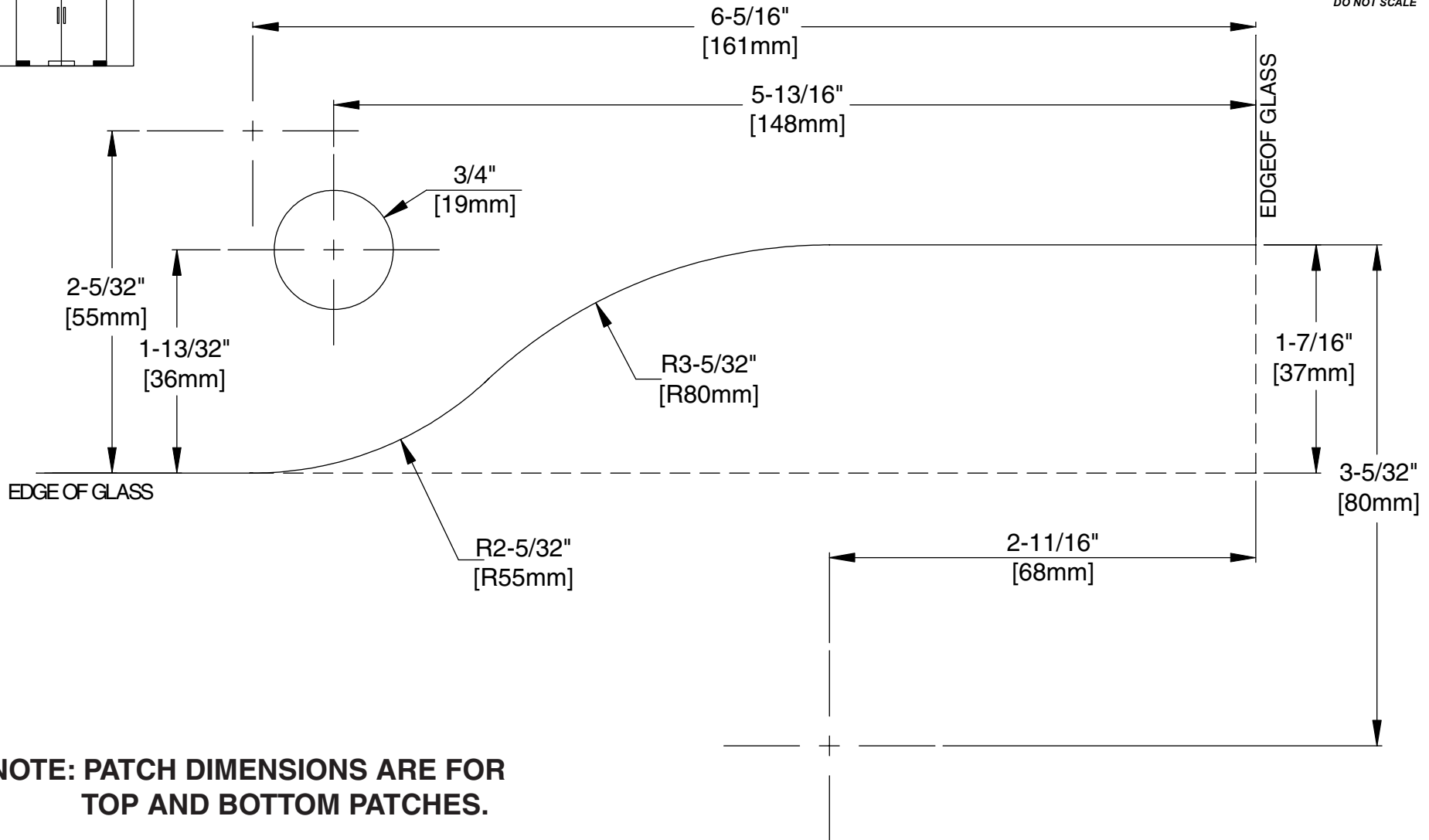
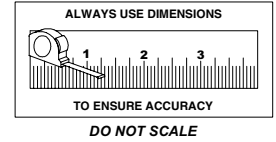
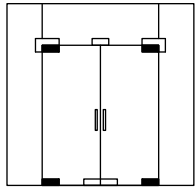
1. Do not scale drawing.
2. Suitable reinforcing by others.
3. 1/2" Extended Spindle required.
4. Rixson design Threshold available on request.
5. All dimensions given in inches (mm).

**5040 Series Floor Closer  
 Center Hung, Glass or Herculite Doors  
 Single Acting**



**ASSA ABLOY**

TEMPLATE NUMBER	SHEET	REV	DATE
<b>CH20640</b>	<b>1 of 2</b>	<b>4</b>	<b>02/22</b>



**NOTE: PATCH DIMENSIONS ARE FOR  
TOP AND BOTTOM PATCHES.**

**5040 Series Patch Fitting  
Top and Bottom Patch**



TEMPLATE NUMBER	SHEET	REV	DATE
<b>CH20640</b>	<b>2 of 2</b>	<b>4</b>	<b>02/22</b>