



Experience a safer  
and more open world

**Approved 2024-05-02**

 Quick Start Guide

5200 Series Full Feature Low Energy Operator

# Regulatory Information

## **FCC:**

### Class B Equipment

This equipment has been tested and found to comply with the limits for a Class B digital device, pursuant to Part 15 of the FCC Rules. These limits are designed to provide reasonable protection against harmful interference in a residential installation. This equipment generates, uses and can radiate radio frequency energy and, if not installed and used in accordance with the instructions, may cause harmful interference to radio communications. However, there is no guarantee that interference will not occur in a particular installation. If this equipment does cause harmful interference to radio or television reception, which can be determined by turning the equipment off and on, the use is encouraged to try to correct the interference by one or more of the following measures:

- Reorient or relocate the receiving antenna.
- Increase the separation between the equipment and receiver.
- Connect the equipment into an outlet on a circuit different from that to which the receiver is connected.
- Consult the dealer or an experienced radio/TV technician for help.

This device complies with Part 15 of the FCC Rules. Operation is subject to the following two conditions: (1) This device may not cause harmful interference, and (2) this device must accept any interference received, including interference that may cause undesired operation.

## **Warning:**

Changes or modifications to this device may void the user's authority to operate the equipment.

## **Industry Canada:**

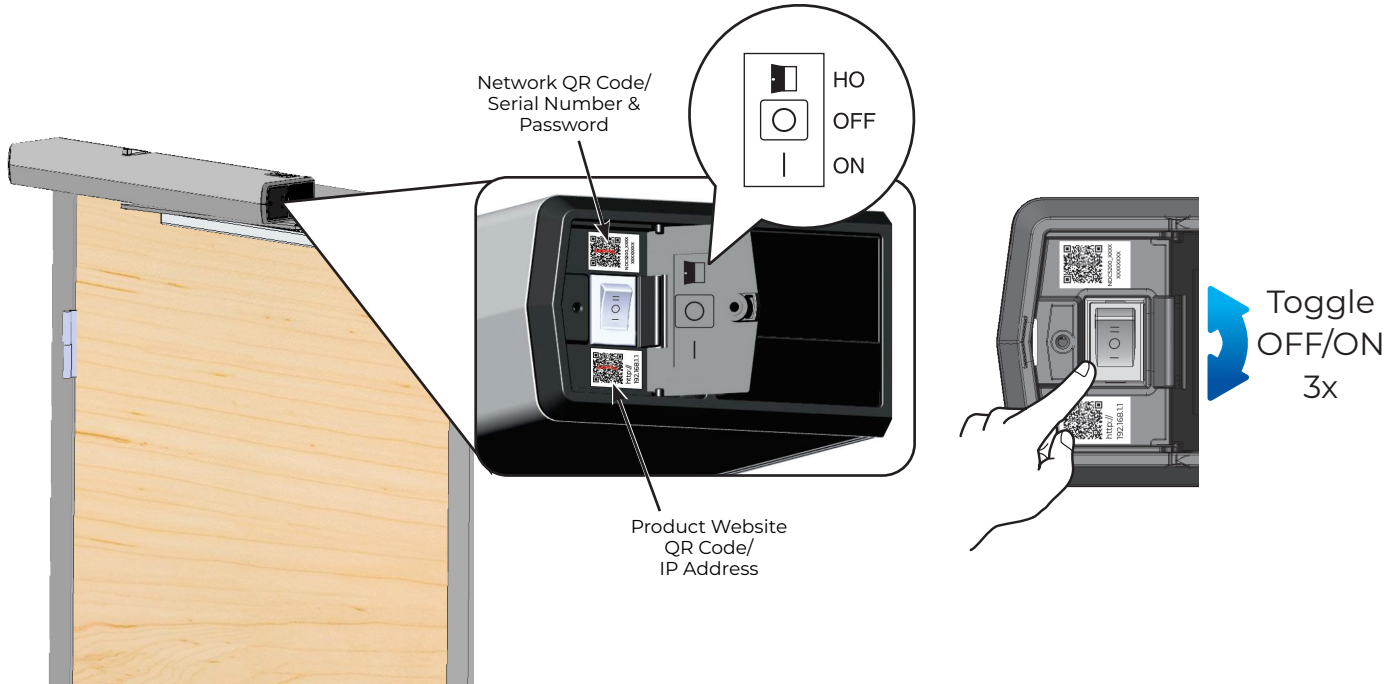
This Class A digital apparatus meets all requirements of the Canadian Interference Causing Equipment Regulations.

Cet appareillage numérique de la classe A répond à toutes les exigences de l'interférence canadienne causant des règlements d'équipement.

## **Declaración de México:**

La operación de este equipo está sujeta a las siguientes dos condiciones: (1) es posible que este equipo o dispositivo no cause interferencia perjudicial y (2) este equipo o dispositivo debe aceptar cualquier interferencia, incluyendo la que pueda causar su operación no deseada.

# Turn On Operator WiFi

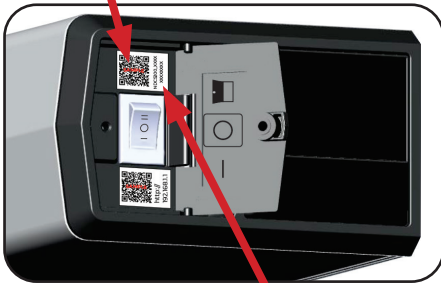


# Connecting to the Wireless Network

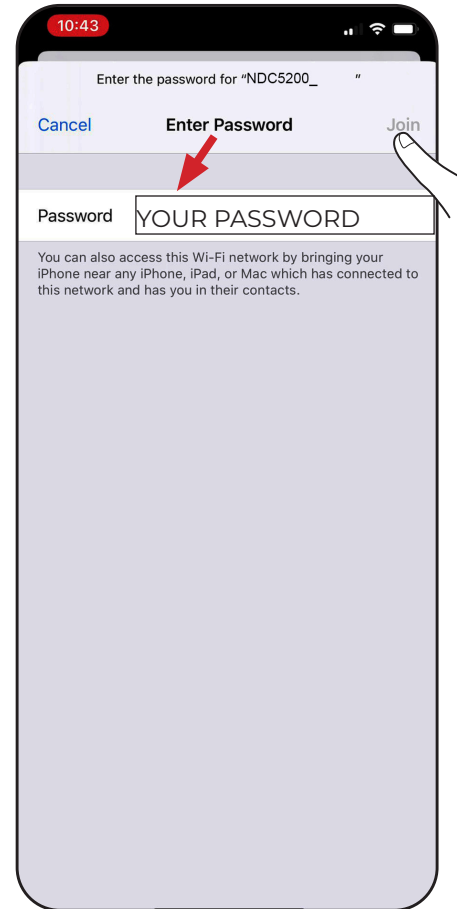
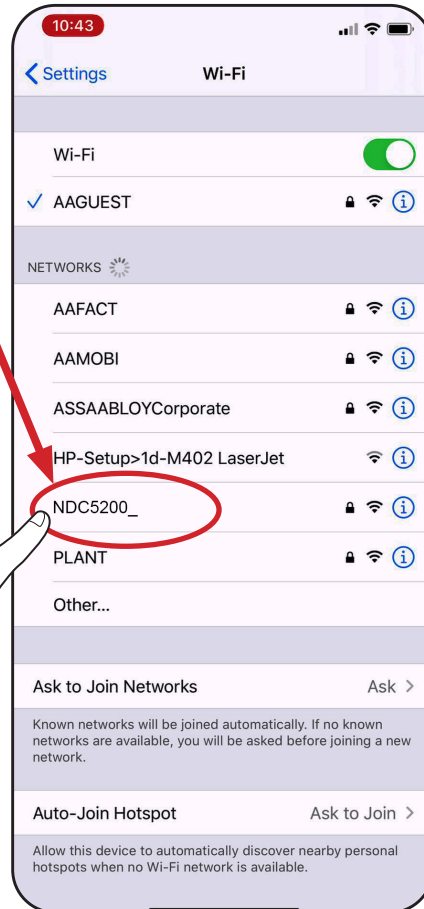
## 1 Open WiFi network on your smart device

Select the operator's unique WiFi network  
NDC5200\_ YOUR SERIAL NUMBER  
or

Use the camera application on your smart device to scan the Network QR Code located on the end cap of the operator to connect to the product's WiFi network.



Serial number and Password



# Connecting to the Wireless Network

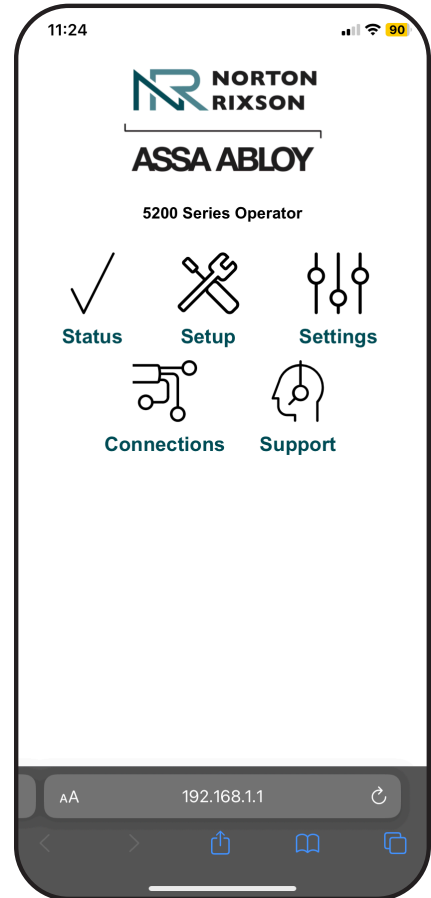
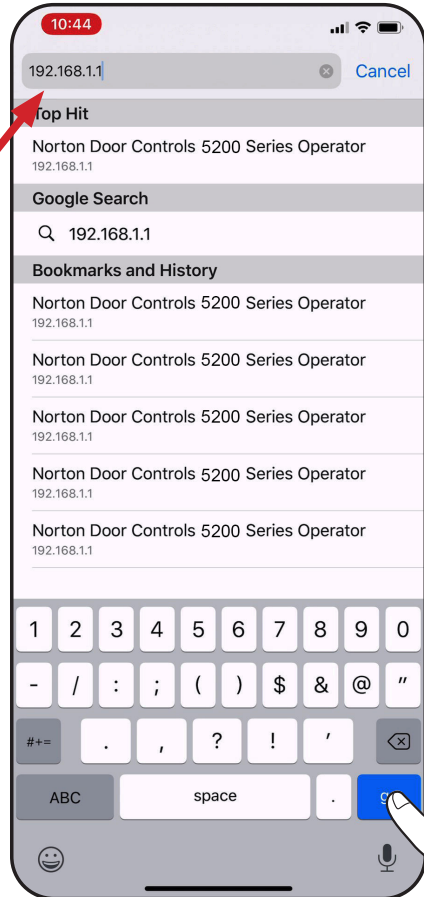
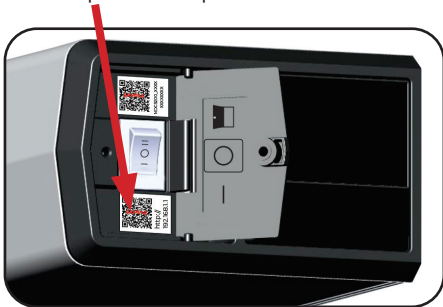
## 2 Open Internet Browser



Enter IP: 192.168.1.1

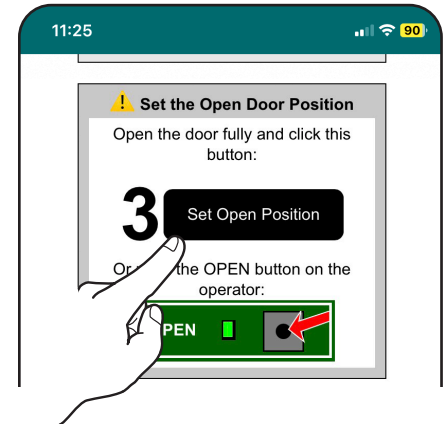
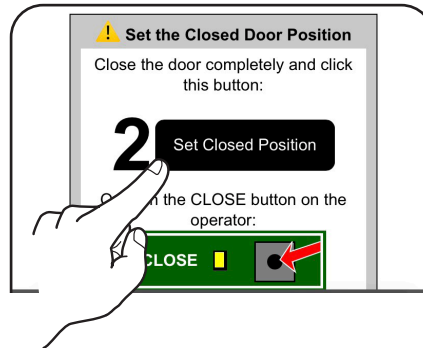
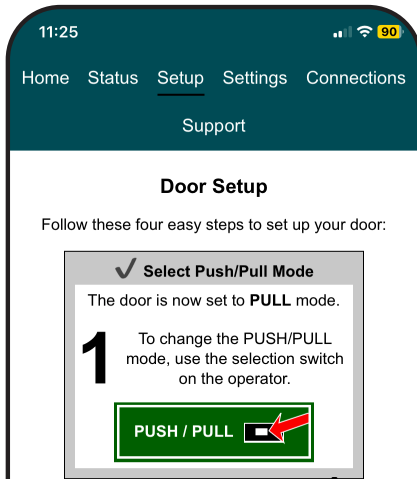
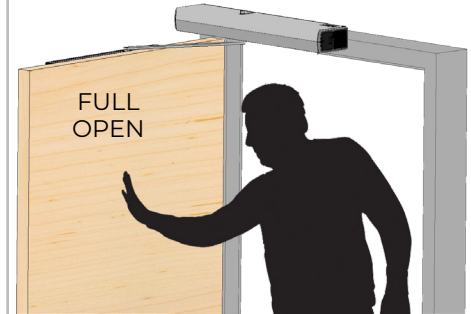
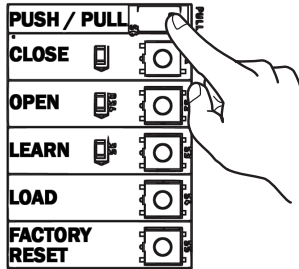
or

Use the camera application on your smart device to scan the Product Website QR Code located on the end cap of the operator.

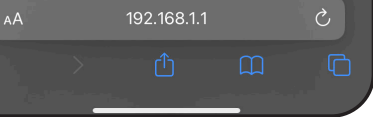
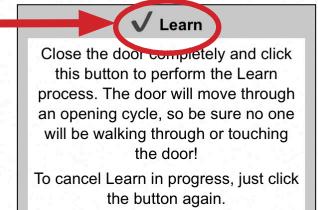
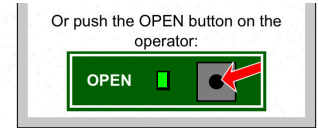


# Setup

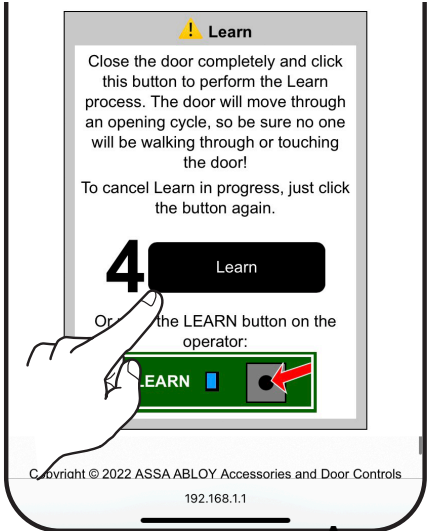
Select arm type on control board.



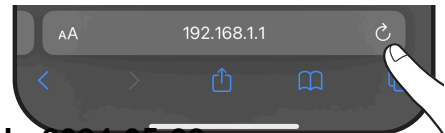
# Setup



Continue to Settings →



Reload this page



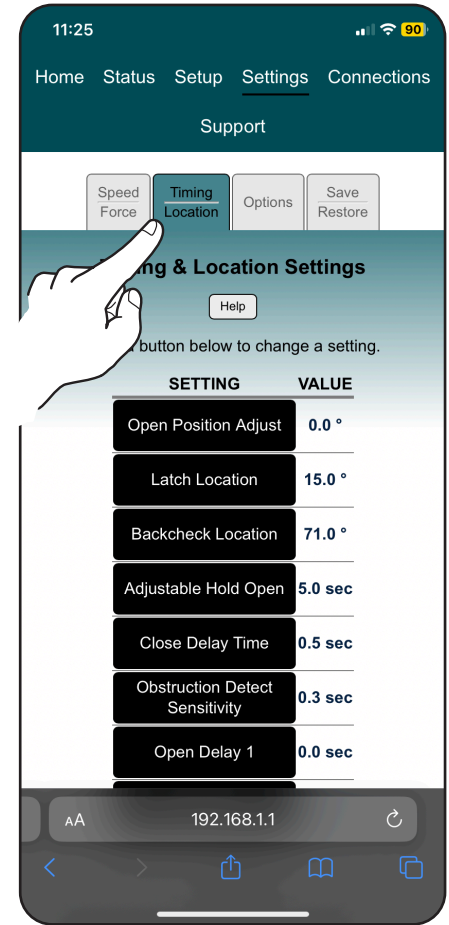
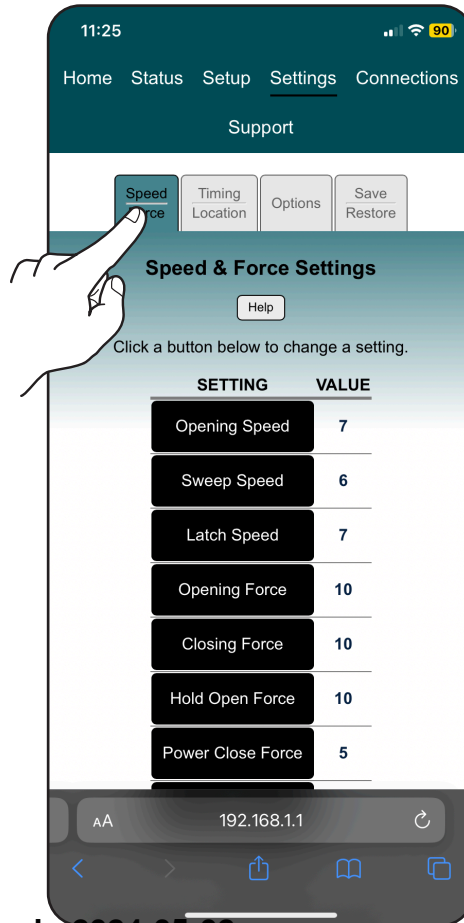
# Settings: Speed/Force & Timing/Location



Speed/Force and Timing/Location settings must be adjusted to meet ANSI BHMA A156.19 (American National Standard for Power Assist and Low Energy Power Operated Doors) requirements for opening and closing based on door weight and width.



Setup complete!  
The following pages are for additional information.



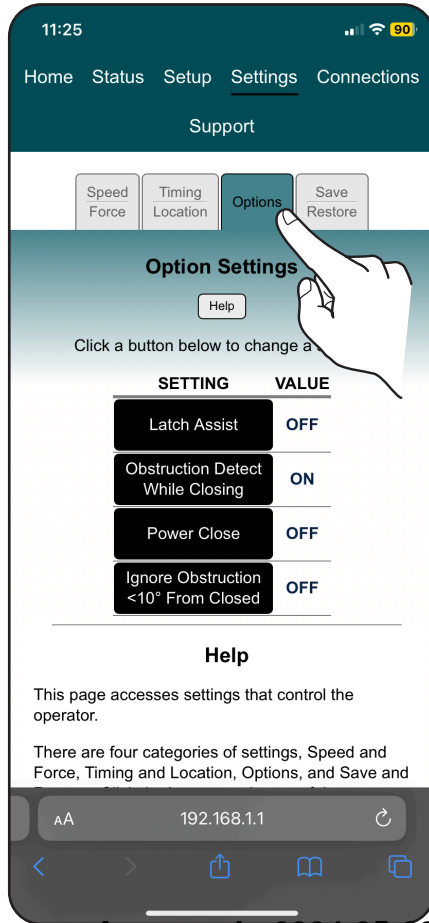


## Settings: Options



**Settings: Options** and **Connections** vary by application.

You can skip these sections if you do not need to customize control of your operator.



Approved 2024-05-02

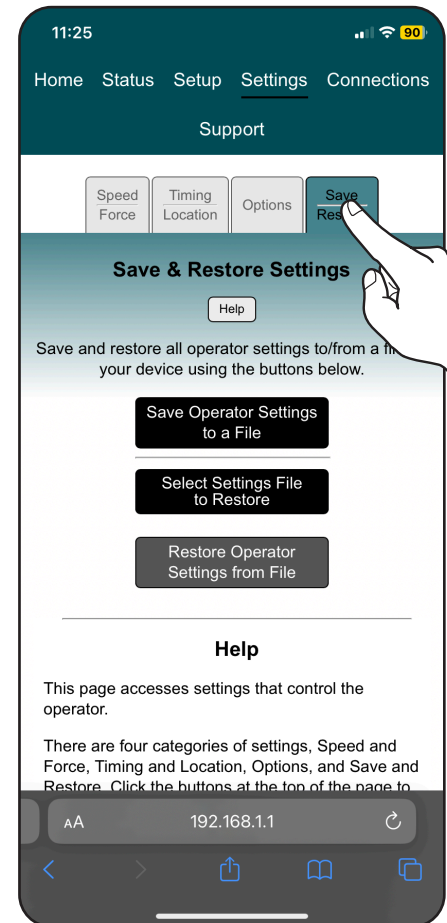
## Settings: Save/Restore



**Settings: Save/Restore** is used to transfer settings to other operators OR to restore settings from a saved file.

Setup and settings for this operator are saved as you go through the menus.

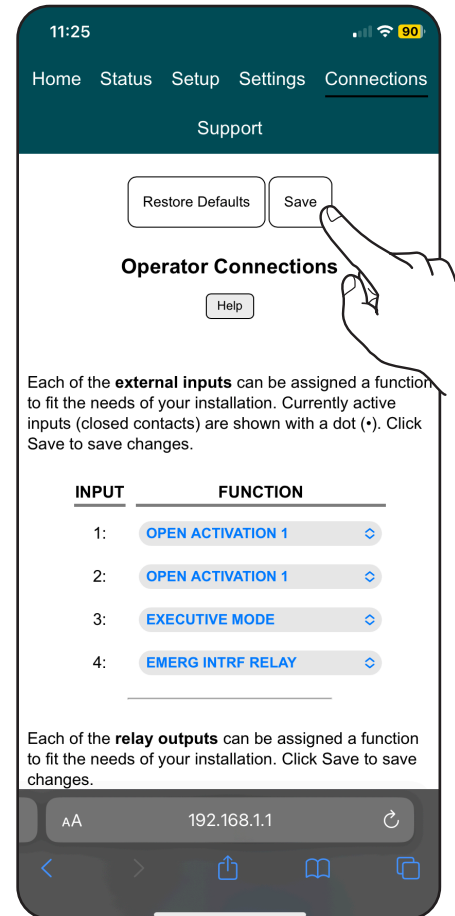
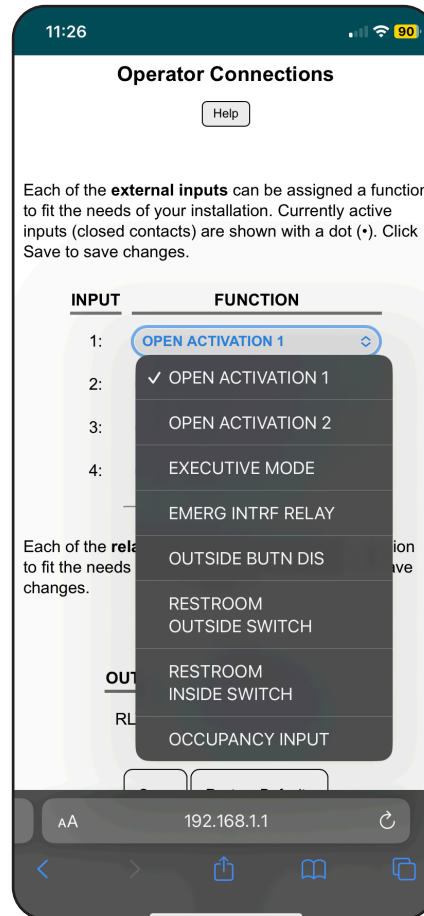
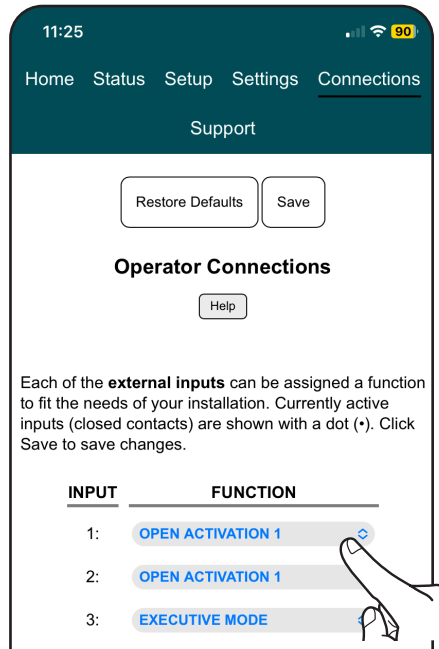
See [Programming Instructions 80-9352-0022-020](#) for details.



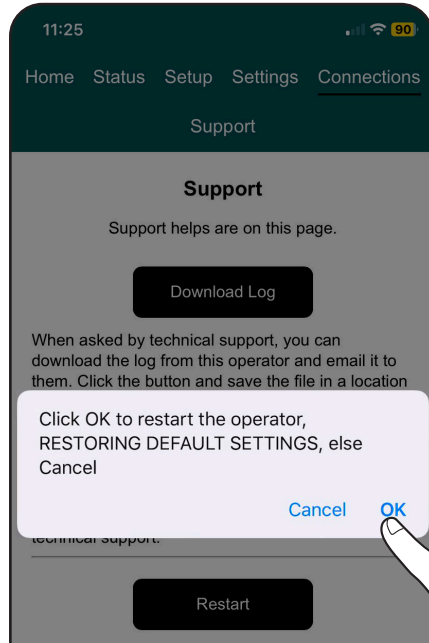
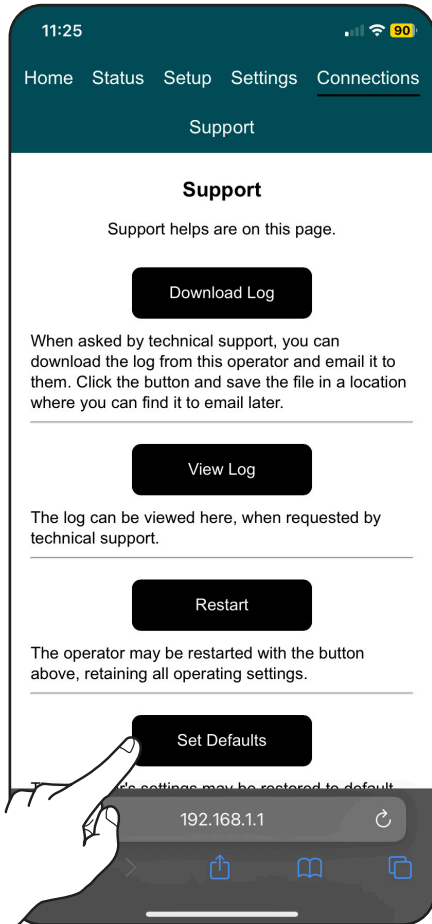
# Connections



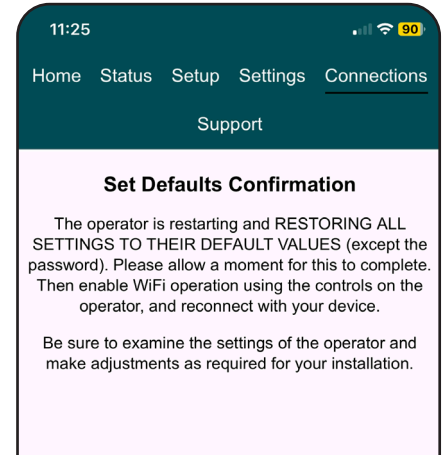
External inputs must be connected.  
(See separate Programming Instructions 80-9352-0022-020 for details.)



# Support: Restoring Factory Default Settings



All settings will reset to factory default.



For full programming instructions and wiring diagrams, refer to Programming Manual 80-9352-0022-020 included with your operator or online at [nortonrixson.com](http://nortonrixson.com)

The ASSA ABLOY Group is the global leader in access solutions. Every day we help people feel safe, secure and experience a more open world.

---



Technical Product Support:  
Monroe, NC 28112 USA  
Phone: 877.974.2255 ext: 2  
Techsupport.NortonRixson@assaabloy.com  
NortonRixson.com

Copyright © 2023, 2024, ASSA ABLOY Accessories and Door Controls Group, Inc.  
All rights reserved. Reproduction in whole or in part without the express written  
permission of ASSA ABLOY Accessories and Door Controls Group, Inc. is prohibited.

80-9352-0021-020 Rev 3 04/24

**Approved 2024-05-02**