

Notes:

- Do not scale drawing.
- Left hand door shown for push side.
- All dimensions are given in inches and millimeters.
- Recommended thickness for reinforcements in hollow-metal doors and frames should provide a combined material thickness of .164" (4.2) MIN.
- This template information based upon use of 5" (127) maximum width butt hinges or 3/4" (19) offset pivots.

For door opening up to 110°

5700 Series Low Energy Operator

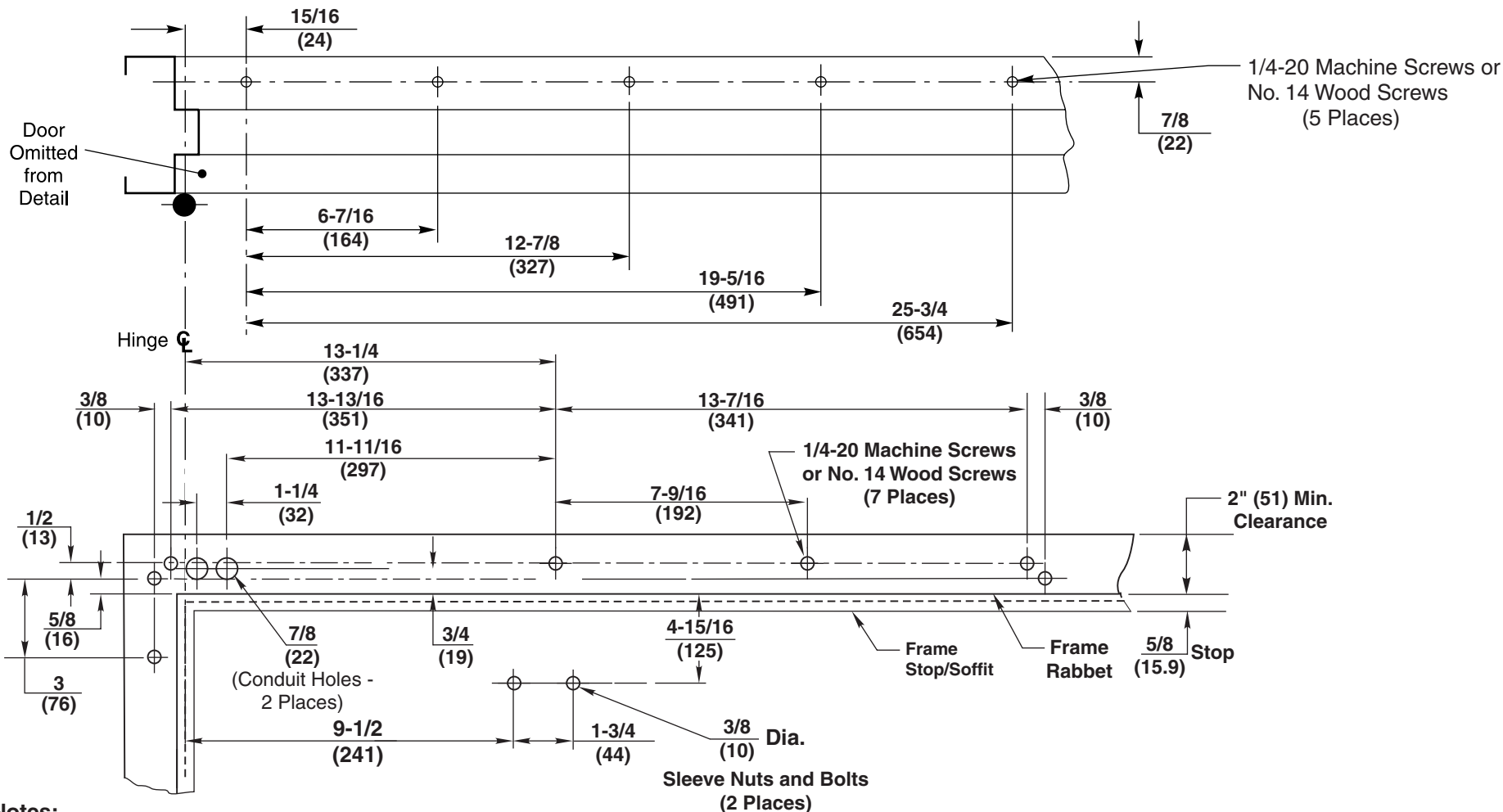
**Drop Application for Stop (Push) Side of Door Installation
 5700DAB**



ASSA ABLOY

TEMPLATE NUMBER	SHEET	REV	DATE
7357-0001	1 of 2	2	02/22

Approved 2023-07-28



Notes:

- Do not scale drawing.
- Left hand door shown for push side.
- All dimensions are given in inches and millimeters.
- Recommended thickness for reinforcements in hollow-metal doors and frames should provide a combined material thickness of .164" (4.2) MIN.
- This template information based upon use of 5" (127) maximum width butt hinges or 3/4" (19) offset pivots.

For door opening up to 180°

5700 Series Lower Energy Operator

**Drop Application for Stop (Push) Side of Door Installation
 5700DAB-180**



ASSA ABLOY

TEMPLATE NUMBER	SHEET	REV	DATE
7357-0001	2 of 2	2	02/22

Approved 2023-07-28