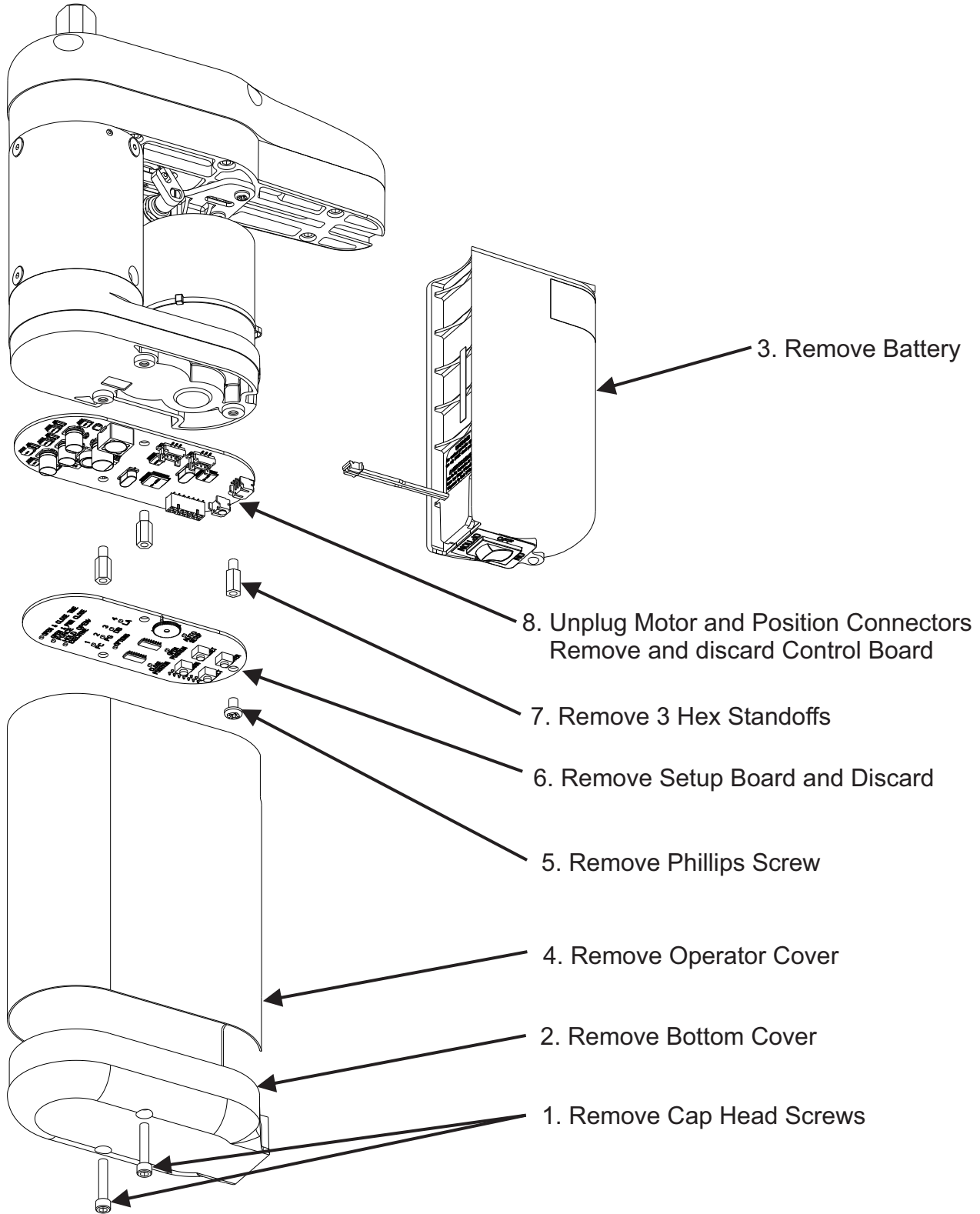
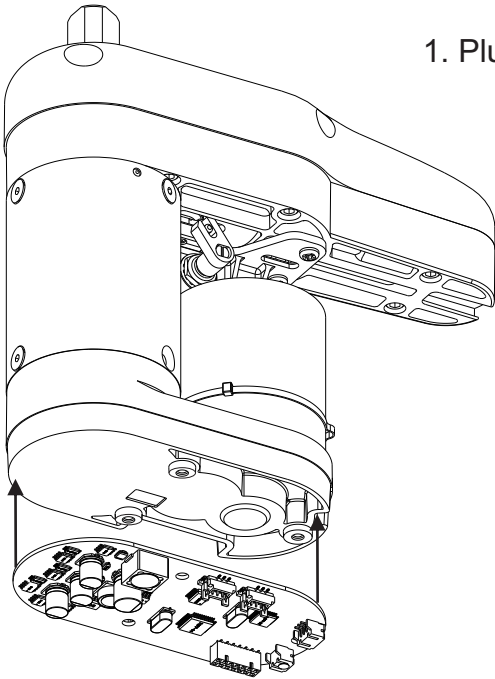


5800 Series Low Energy Operator Controls and Setup Board Replacement Instructions

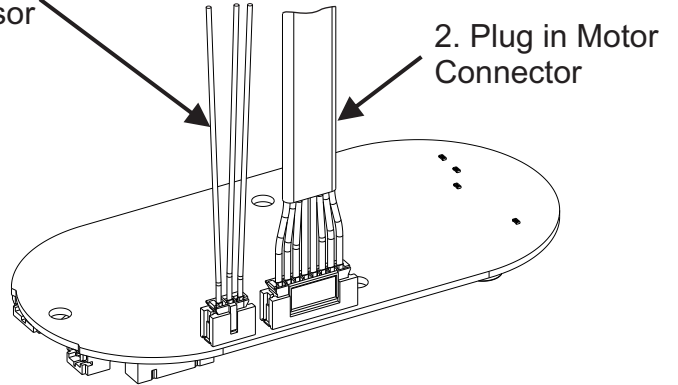
1 Remove Old Control board and Setup Board



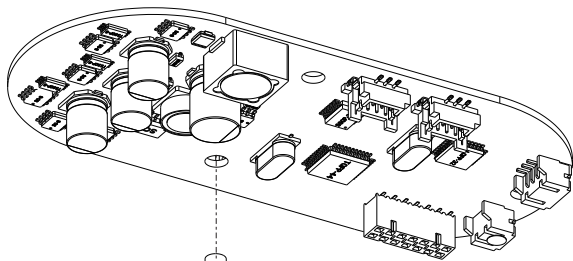
2 Install New Control board



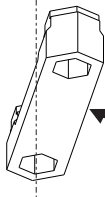
1. Plug in Position Sensor



3 Assemble Fiber Washer and Hex Standoff

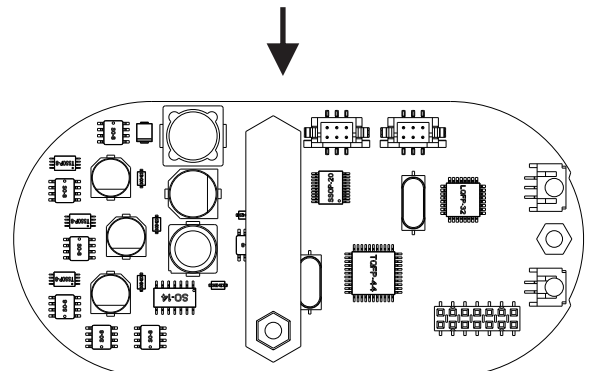
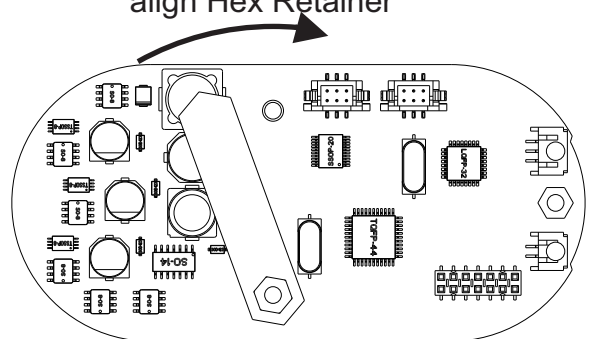


Hex Standoff - hand tighten the Hex Standoff

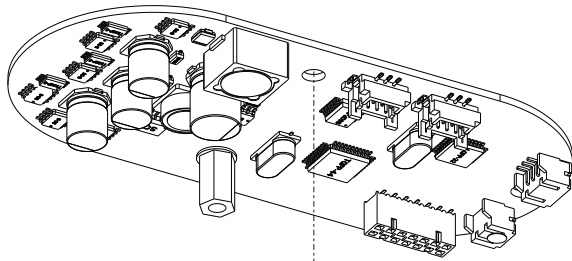


Assemble plastic Hex Retainer onto Standoff

Rotate Clockwise to align Hex Retainer

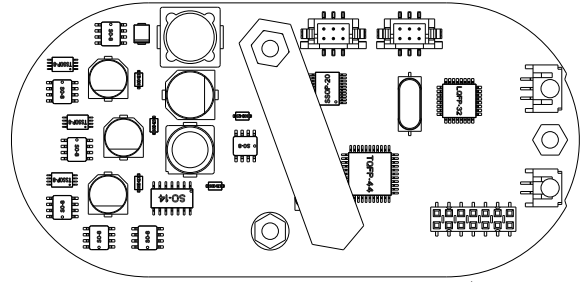


4 Assemble Second Hex Standoff

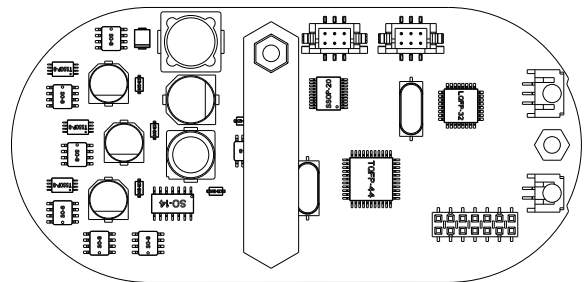


Hex Standoff - hand tighten the Hex Standoff

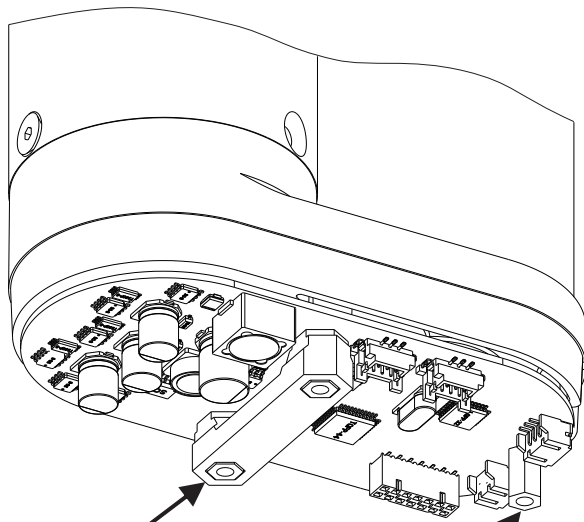
Assemble plastic Hex Retainer onto Standoff



Rotate Clockwise to align Hex Retainer

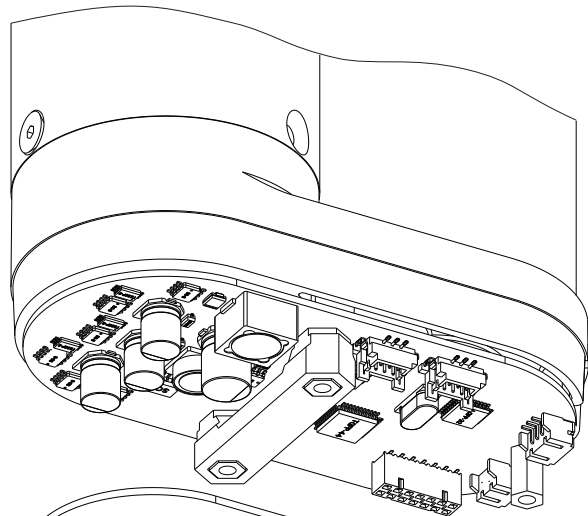


5 Assemble Hex Retainer, final Hex Standoff, and Setup Board



With Both Hex Standoffs Aligned - Push Hex Retainer fully in place

Assemble final Hex Standoff

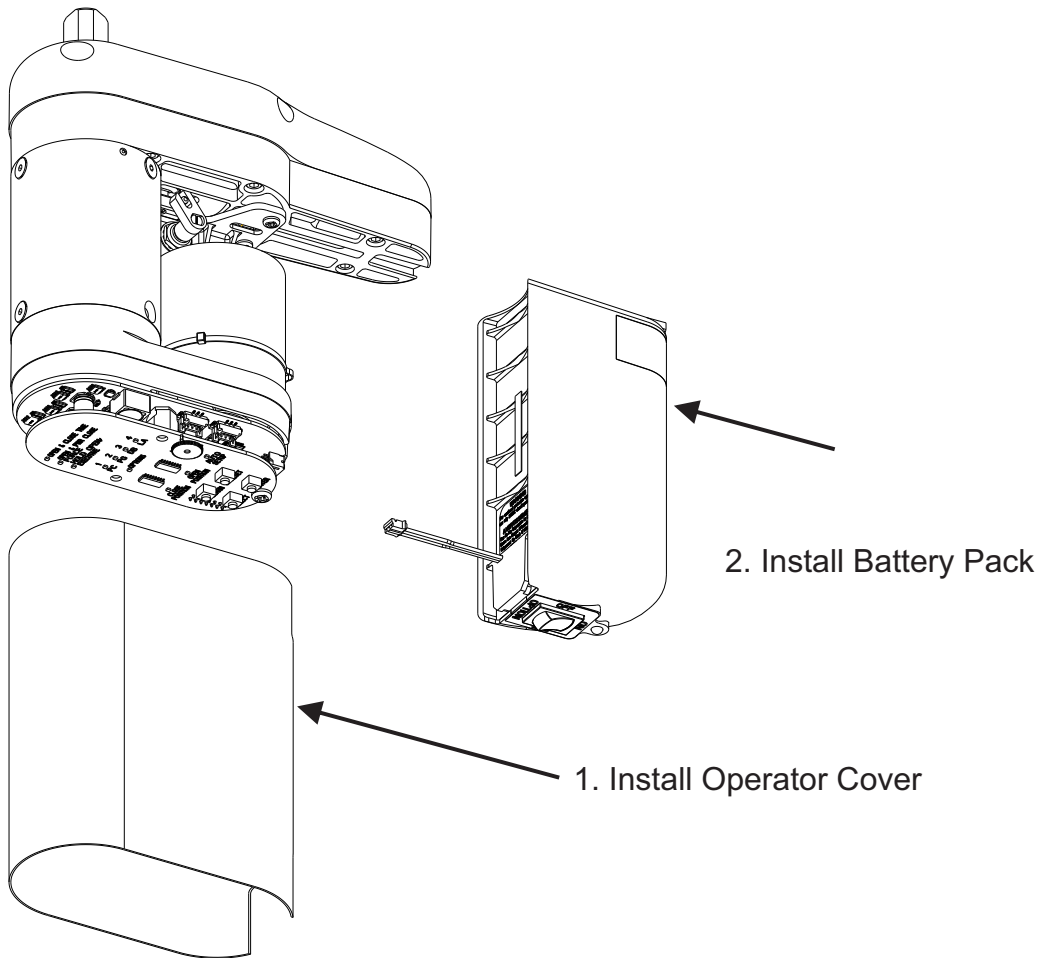


Assemble Setup Board

Secure with Phillips Screw



6 Reinstall Cosmetic Cover and Battery Pack



7 Initializing the Remote Control

1. To link an RF switch with a door controller, **PERFORM** the following:
 - a. **PRESS** and **HOLD** the “LEARN” push button on the controller until LEDs 1 through 4 flash green. The controller shall remain in the learn mode for 20 seconds or until the RF signal is received.
 - b. **PUSH** the RF push button. **CLOSE POSITION LED** shall flash green indicating that the operator accepted this RF push button.
 - c. **REPEAT** steps a. and b. as necessary for up to eight 5800 transmitters.
2. To remove all RF push buttons from memory, **PERFORM** the following:
 - a. While pressing and holding the “LEARN” push button on the controller, **PRESS** and **RELEASE** the “RESET” push button.

8

Program the Operator

1. Refer to Figure 12 and, at the base of the setup board, PRESS and HOLD both “SELECT” and “ENTER” push buttons until LEDs 1 through 4 flash. The following shall occur:

- The operator shall enter program mode.
- The “CLOSE POSITION” LED shall illuminate red and remain lit.

2. With the door in the closed position, PRESS and RELEASE the “ENTER” push button. The following shall occur:

- The “CLOSE POSITION” LED shall flash green briefly.
- The “OPEN POSITION” LED shall illuminate red.

3. With the door in the fully open position, PRESS and RELEASE the “ENTER” push button. If the ENTER button is not accessible with the door in the fully open position, PRESS and RELEASE one of the activation push buttons. The following shall occur:

- The “OPEN POSITION” LED shall flash green briefly.
- The “AUTO SETUP” LED shall illuminate red.

4. With the door in the closed position, PRESS and RELEASE the “ENTER” push button. The following shall occur:

- The door shall rapidly open 30 to 45 degrees and then close.
- The “AUTO SETUP” led shall illuminate green.
- The Operator will exit programming mode.

5. If further door adjustments are desired or optional features will be enabled refer to Section 11, and PERFORM adjustments.

6. To reset the controller, PERFORM the following:

- PRESS and HOLD the “ENTER” button,
- While holding down the “ENTER” button PRESS and RELEASE the “RESET” button.
- LEDs 1 through 4 shall flash green briefly

NOTE: Resetting the controller does not reset the RF transmitters.

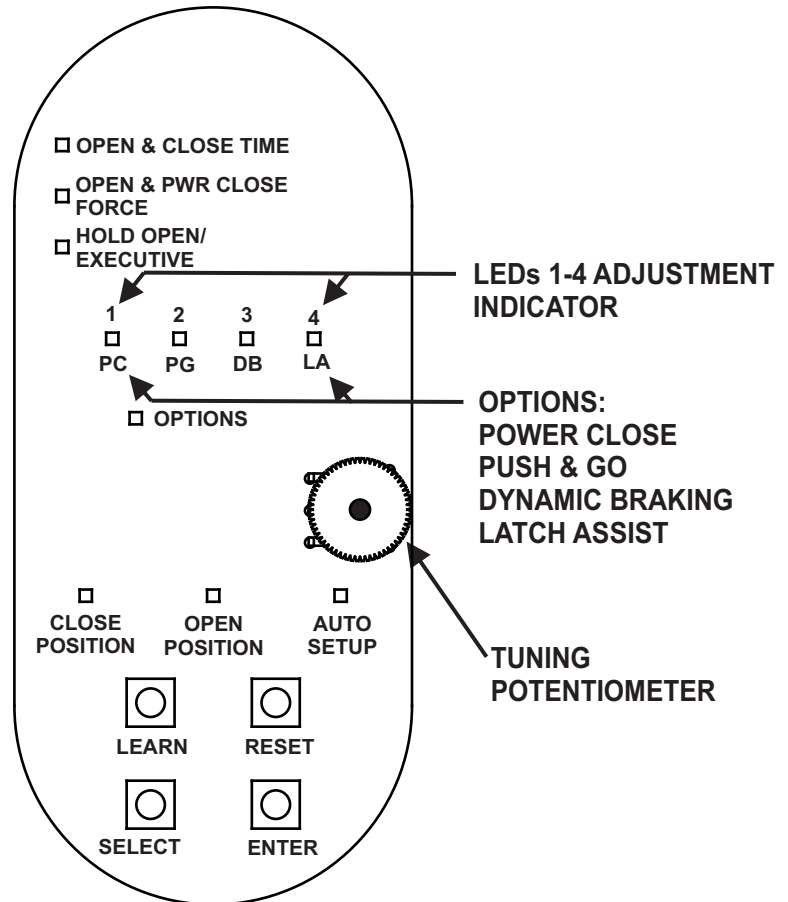
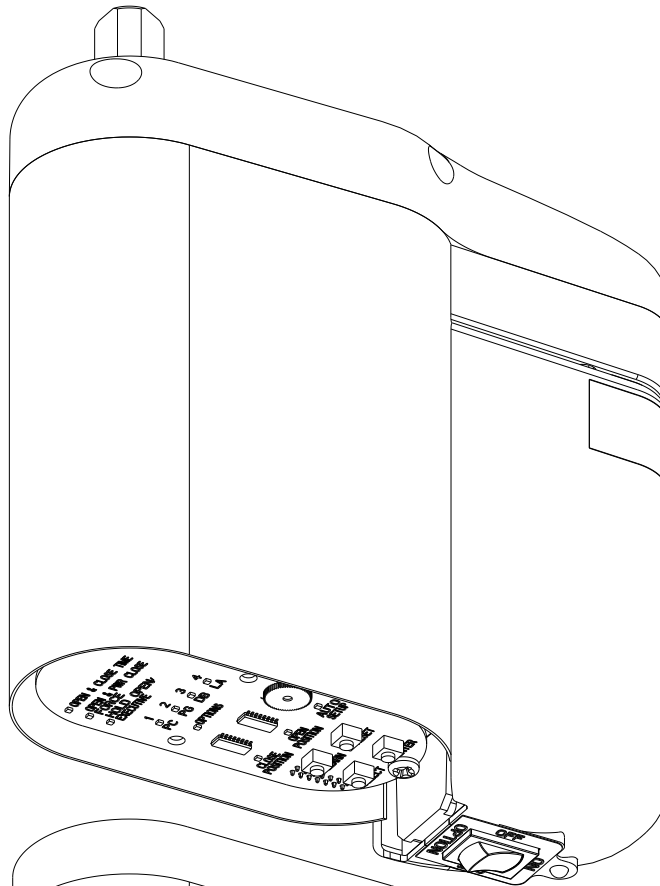


Figure 12

The ASSA ABLOY Group is the global leader in access solutions. Every day we help people feel safe, secure and experience a more open world.

9

Install Bottom Cover



1. Assemble Bottom Cover

2. Install Cap Head Screws

Technical Product Support:
Monroe, NC 28112 USA
Phone: 877.974.2255 ext: 2
Techsupport.NortonRixson@assaabloy.com
NortonRixson.com

Copyright © 2017, 2024, ASSAABLOY Accessories and Door Controls Group, Inc. All rights reserved. Reproduction in whole or in part without the express written permission of ASSAABLOY Accessories and Door Controls Group, Inc. is prohibited.

ADA700102 Rev B 05/24

Approved 2024-05-16^{6 of 6}

Experience a safer
and more open world