


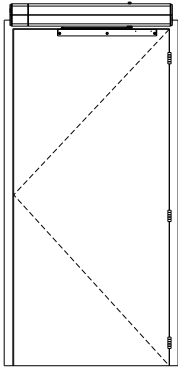
- NOTES:**
- Dimensions shown in inches / (mm) unless specified otherwise.
 - Electrical requirements:
 - Power input of 120VAC, 5Amp minimum
 - Accessories circuit for activation to operator and low voltage
 - For initial set up, doors must be un-latched and free to move
 - For additional installation instructions, see instruction sheet 80-9360-1040-020. Visit www.NortonRixson.com
 - Refer to page 2 for proper handling of product

**6011 Series Template
 for 36"-48" wide door
 shown with up to 5" Butt Hinges
 Maximum reveal of 1/8"**

Approved 2023-07-12

| | | |
|--------|--|---------------------|
| Page 1 |  ASSA ABLOY | |
| | TEMPLATE NUMBER 7360-1045 | REV DATE 2 05/23 |

Single Push Side

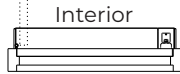
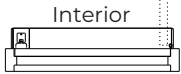


NOTE:

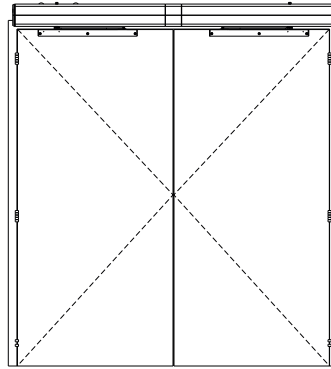
- All illustrations on this page shown with 36" (914mm) wide doors

Left Hand Door
(view from below)

Right Hand Door
(view from below)

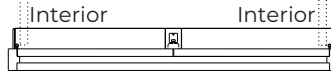


Double Door Push Side

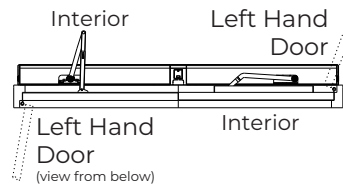
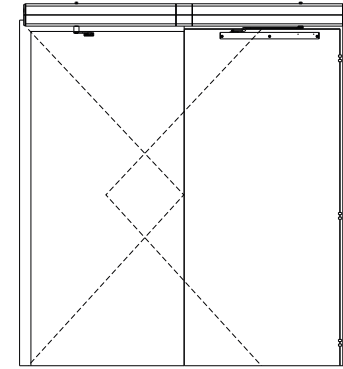


Right Hand Door
(view from below)

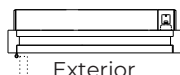
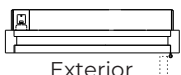
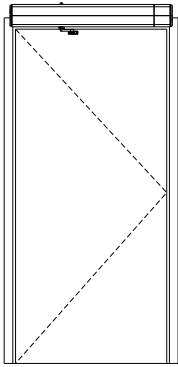
Left Hand Door
(view from below)



Double Door Double Egress Left Hand



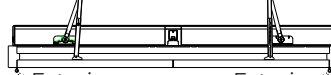
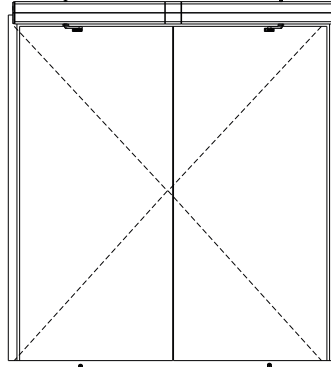
Single Pull Side



Right Hand Door
(view from below)

Left Hand Door
(view from below)

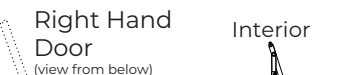
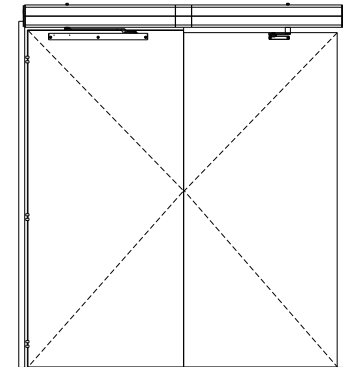
Double Door Pull Side



Left Hand Door
(view from below)

Right Hand Door
(view from below)

Double Door Double Egress Right Hand



Right Hand Door
(view from below)

Right Hand Door
(view from below)

**6011 Series Template
for 36"-48" wide door
shown with up to 5" Butt Hinges
Maximum reveal of 1/8"**

Approved 2023-07-12

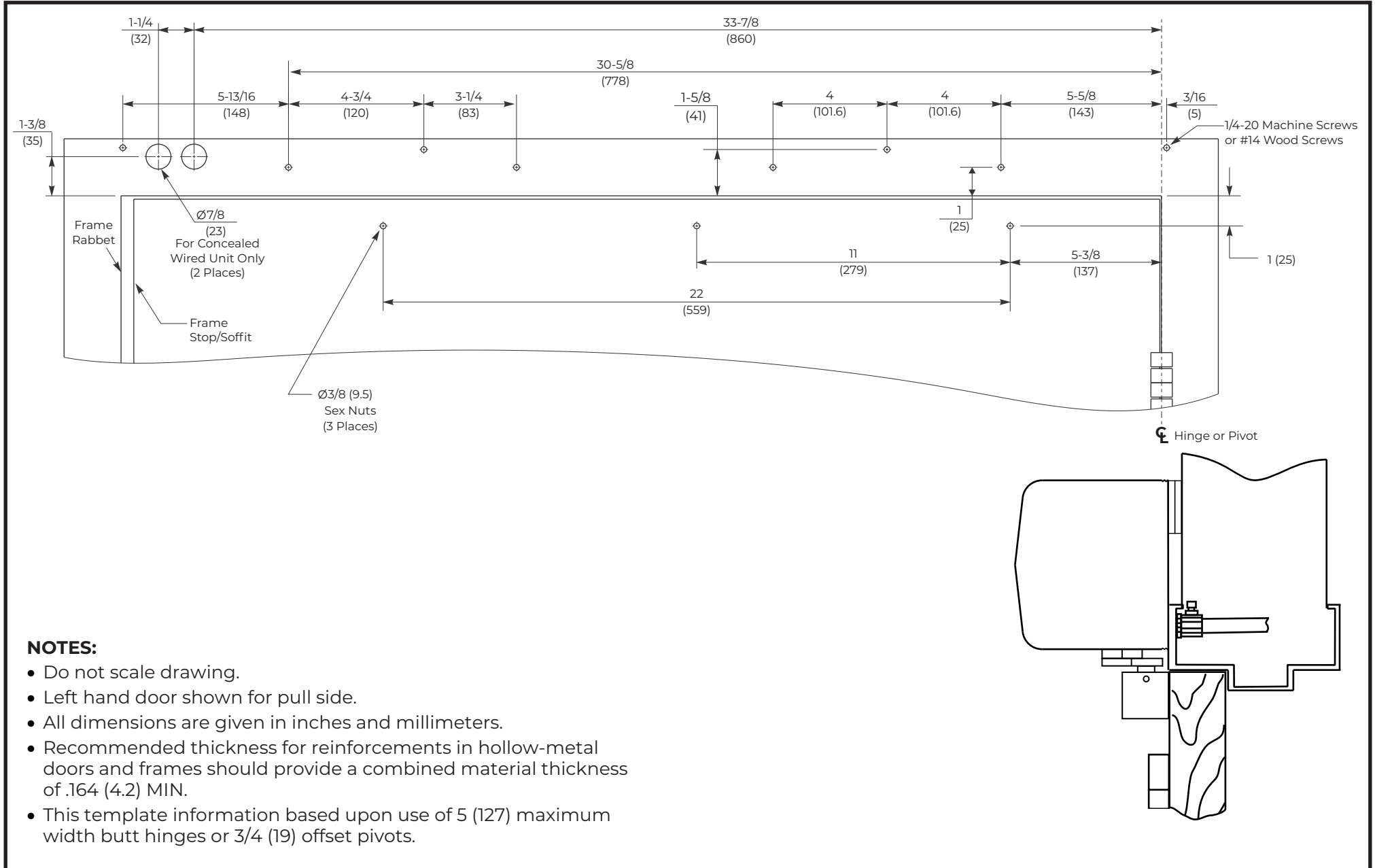
Page 2



ASSA ABLOY

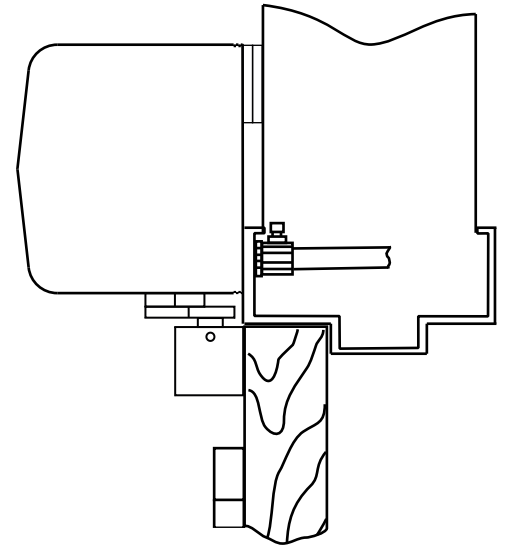
TEMPLATE NUMBER
7360-1045

REV DATE
2 05/23



NOTES:

- Do not scale drawing.
- Left hand door shown for pull side.
- All dimensions are given in inches and millimeters.
- Recommended thickness for reinforcements in hollow-metal doors and frames should provide a combined material thickness of .164 (4.2) MIN.
- This template information based upon use of 5 (127) maximum width butt hinges or 3/4 (19) offset pivots.



**6011 Series Template
 for 36"-48" wide door
 shown with up to 5" Butt Hinges
 Maximum reveal of 1/8"**

Page 3



ASSA ABLOY

| | | |
|-----------------|-----|-------|
| TEMPLATE NUMBER | REV | DATE |
| 7360-1045 | 2 | 05/23 |

Approved 2023-07-12