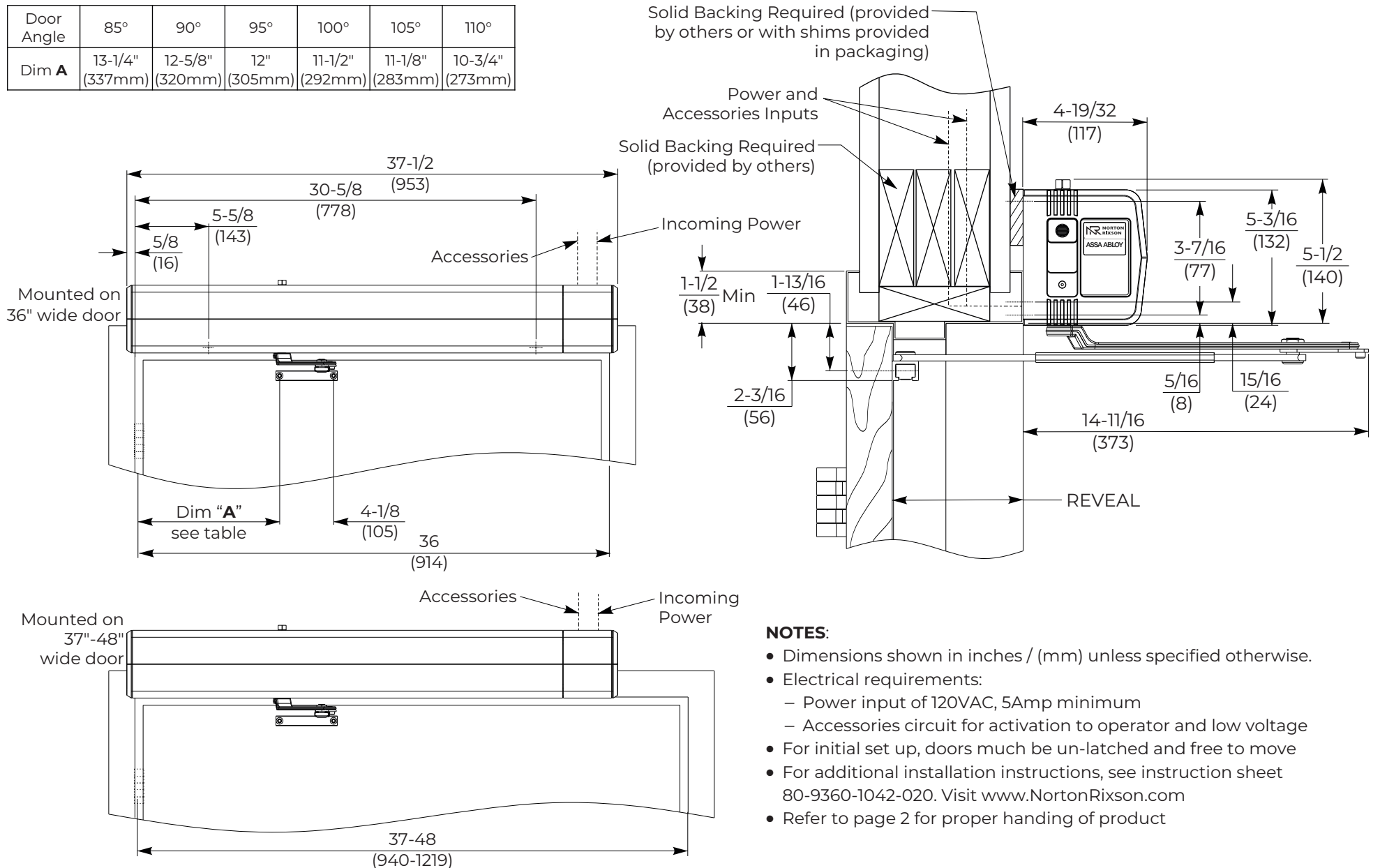


Door Angle	85°	90°	95°	100°	105°	110°
Dim A	13-1/4" (337mm)	12-5/8" (320mm)	12" (305mm)	11-1/2" (292mm)	11-1/8" (283mm)	10-3/4" (273mm)



**6071 Series Template  
 for 36"-48" frames with up to 5" Butt Hinges  
 (shown on 36" and 37"-48" wide frames)  
 Reveal of 4-13/16" to 7-3/8" and Opening of 85° to 110°**

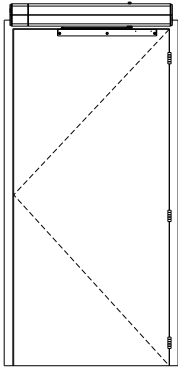
**Approved 2023-07-12**

Page 1



TEMPLATE NUMBER	REV	DATE
7360-1050	2	05/23

Single Push Side

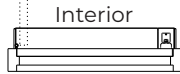
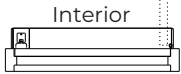


**NOTE:**

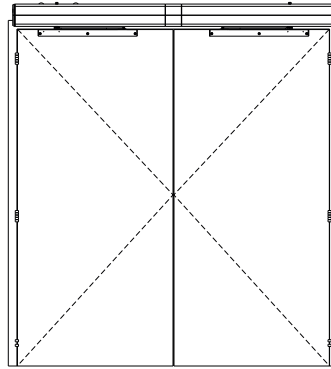
- All illustrations on this page shown with 36" (914mm) wide doors

Left Hand Door  
(view from below)

Right Hand Door  
(view from below)

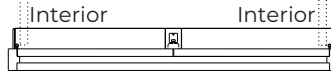


Double Door Push Side

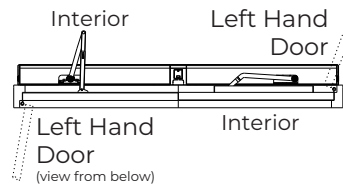
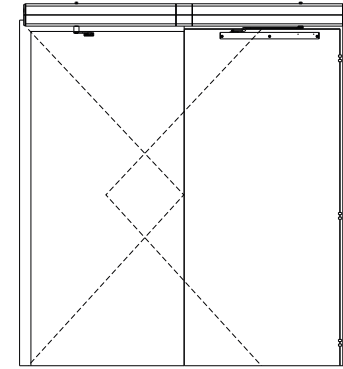


Right Hand Door  
(view from below)

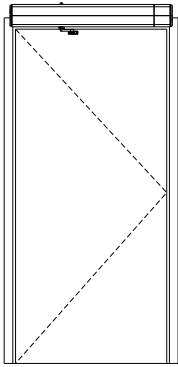
Left Hand Door  
(view from below)



Double Door Double Egress Left Hand



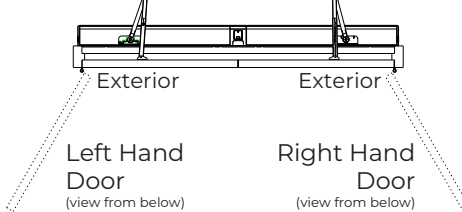
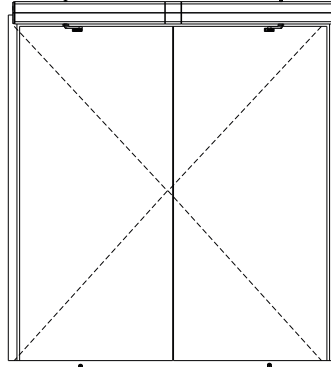
Single Pull Side



Right Hand Door  
(view from below)

Left Hand Door  
(view from below)

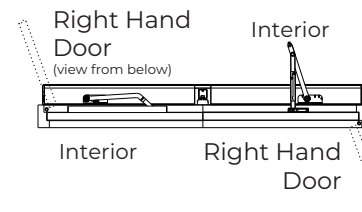
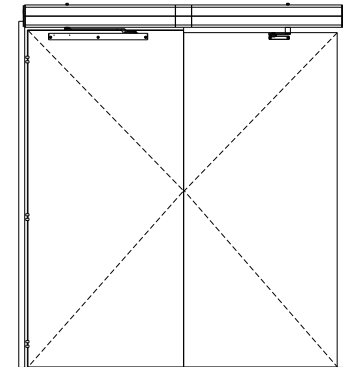
Double Door Pull Side



Left Hand Door  
(view from below)

Right Hand Door  
(view from below)

Double Door Double Egress Right Hand



Right Hand Door  
(view from below)

Interior Right Hand Door

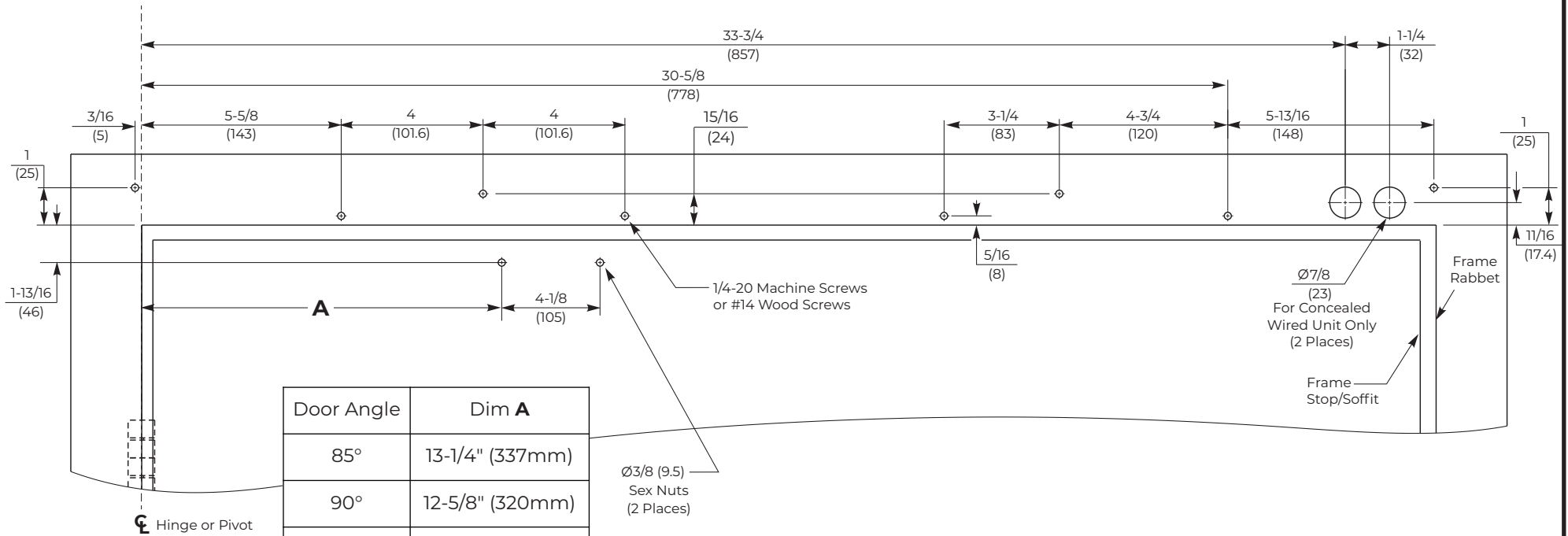
**6071 Series Template**  
**for 36"-48" frames with up to 5" Butt Hinges**  
**(shown on 36" and 37"-48" wide frames)**  
**Reveal of 4-13/16" to 7-3/8" and Opening of 85° to 110°**

Approved 2023-07-12

Page 2



TEMPLATE NUMBER	REV	DATE
7360-1050	2	05/23



Door Angle	Dim A
85°	13-1/4" (337mm)
90°	12-5/8" (320mm)
95°	12" (305mm)
100°	11-1/2" (292mm)
105°	11-1/8" (283mm)
110°	10-3/4" (273mm)

⊕ Hinge or Pivot

Ø3/8 (9.5)  
Sex Nuts  
(2 Places)

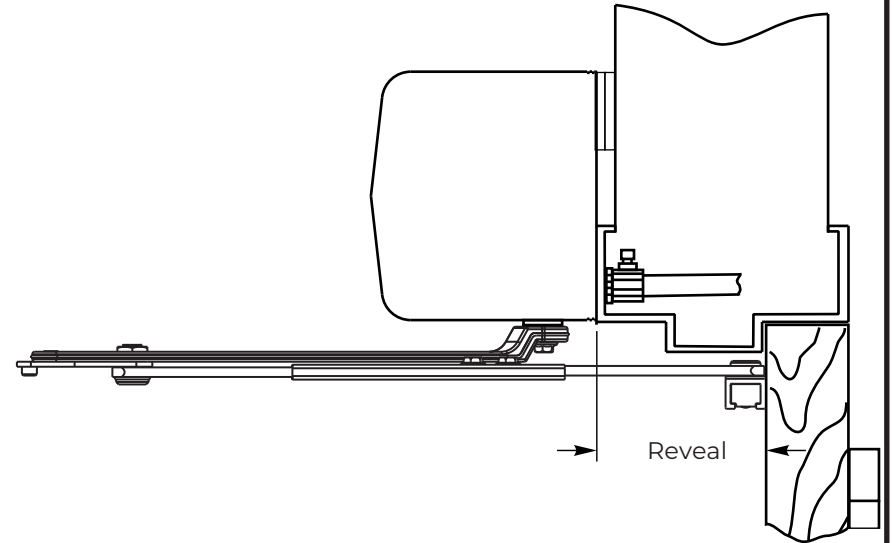
Ø7/8 (23)  
For Concealed  
Wired Unit Only  
(2 Places)

Frame  
Stop/Soffit

Frame  
Rabbet

**NOTES:**

- Do not scale drawing.
- Left hand door shown for push side.
- All dimensions are given in inches and millimeters.
- Recommended thickness for reinforcements in hollow-metal doors and frames should provide a combined material thickness of .164 (4.2) MIN.
- This template information based upon use of 5 (127) maximum width butt hinges or 3/4 (19) offset pivots.



**6071 Series Template  
 for 36"-48" frames with up to 5" Butt Hinges  
 (shown on 36" and 37"-48" wide frames)  
 Reveal of 4-13/16" to 7-3/8" and Opening of 85° to 110°**

Approved 2023-07-12

Page 3



TEMPLATE NUMBER	REV	DATE
7360-1050	2	05/23