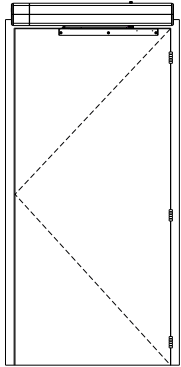


6011 Series Template  
for 36" wide door minimum  
shown with up to 5" Butt Hinges  
Maximum reveal of 1/8"

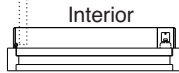
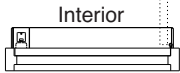
### Single Push Side



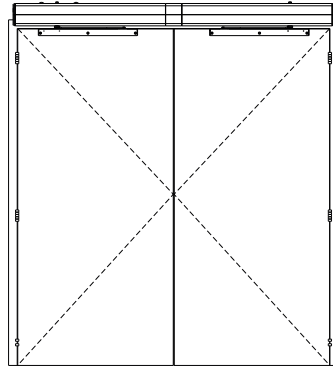
**NOTE:**  
- All illustrations on this page shown with 36" (914mm) wide doors

Left Hand Door  
(view from below)

Right Hand Door  
(view from below)

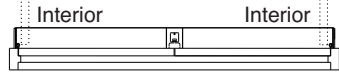


### Double Door Push Side

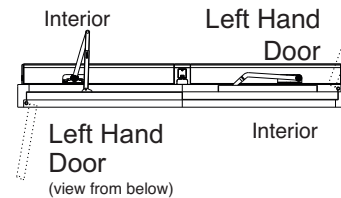
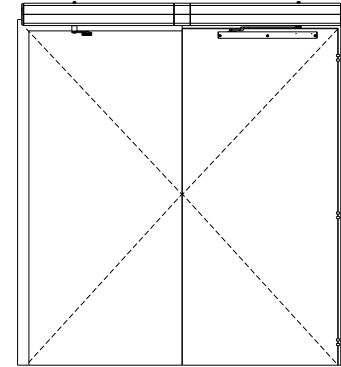


Right Hand Door  
(view from below)

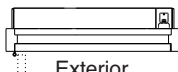
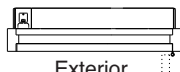
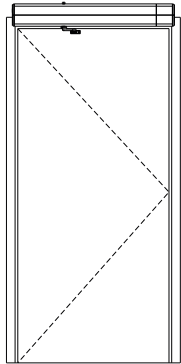
Left Hand Door  
(view from below)



### Double Door Double Egress Left Hand



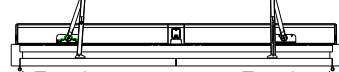
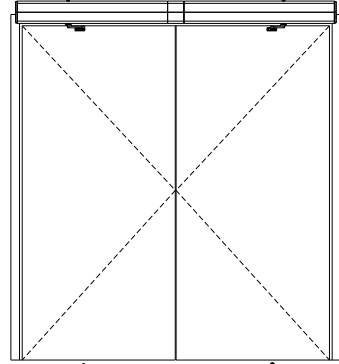
### Single Pull Side



Right Hand Door  
(view from below)

Left Hand Door  
(view from below)

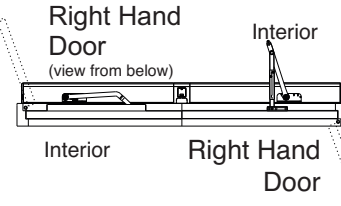
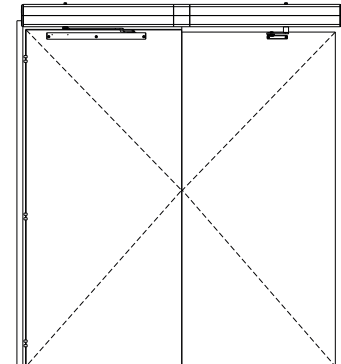
### Double Door Pull Side



Left Hand Door  
(view from below)

Right Hand Door  
(view from below)

### Double Door Double Egress Right Hand



6011 Series Template  
for 36" wide door minimum  
shown with up to 5" Butt Hinges  
Maximum reveal of 1/8"

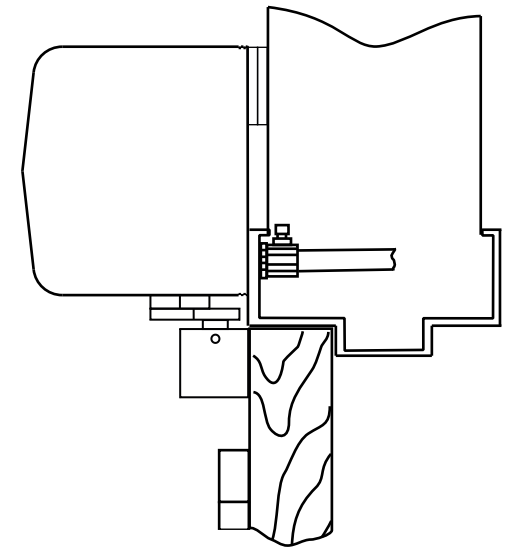
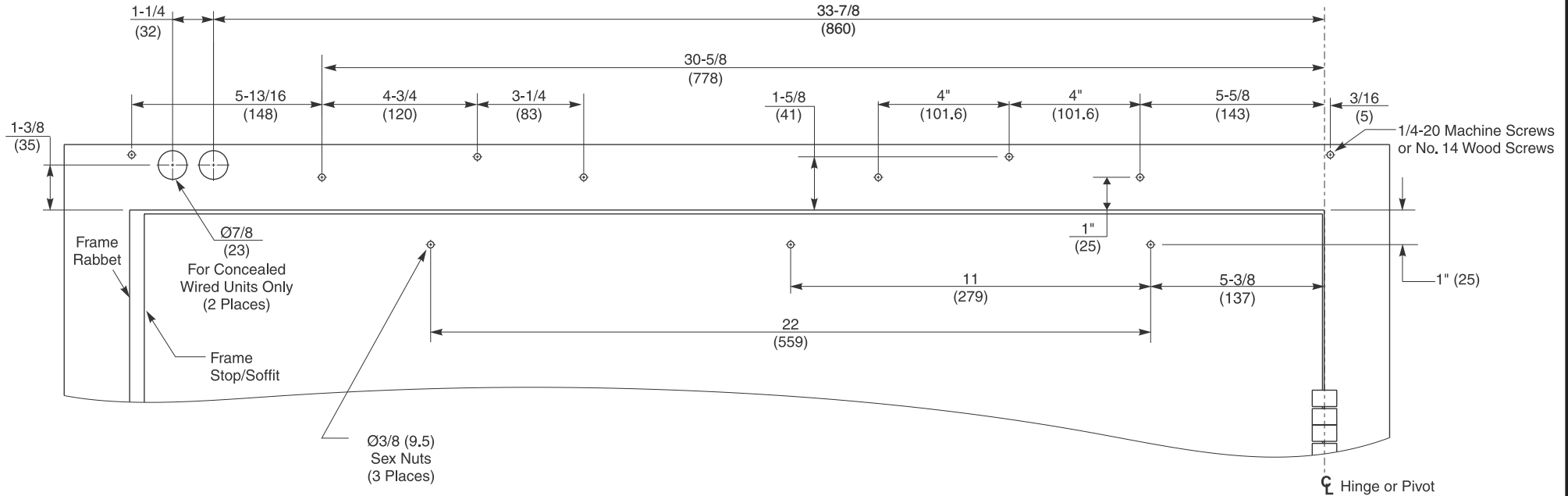
Page 2

**Norton**<sup>®</sup>

**ASSA ABLOY**

www.nortondoortcontrols.com

|                  |     |       |
|------------------|-----|-------|
| TEMPLATE NUMBER  | REV | DATE  |
| 80-7360-1045-020 | 1   | 06/20 |



Notes:

- Do not scale drawing.
- Left hand door shown for pull side.
- All dimensions are given in inches and millimeters.
- Recommended thickness for reinforcements in hollow-metal doors and frames should provide a combined material thickness of .164 (4.2) MIN.
- This template information based upon use of 5 (127) maximum width butt hinges or 3/4 (19) offset pivots.

6011 Series Template  
for 36" wide door minimum  
shown with up to 5" Butt Hinges  
Maximum reveal of 1/8"

Page 3

**Norton**

**ASSA ABLOY**

www.nortondoortcontrols.com

|                  |     |       |
|------------------|-----|-------|
| TEMPLATE NUMBER  | REV | DATE  |
| 80-7360-1045-020 | 1   | 06/20 |