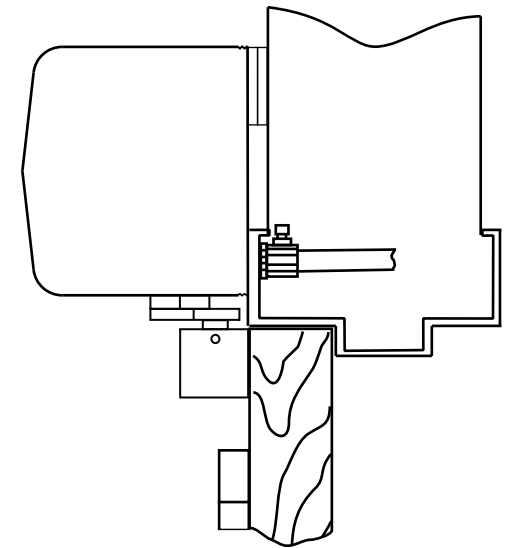


	Dim A	Dim B	Dim C	Dim D
D6011/6051 - 36	5-9/16 (141)	30-9/16 (776)	4-1/16 (103)	30-9/16 (776)
D6011/6051 - 42	11-9/16 (294)	36-9/16 (929)	10-1/16 (255.5)	36-9/16 (929)
D6011/6051 - 48	17-9/16 (446)	42-9/16 (1081)	16-1/16 (408)	42-9/16 (1081)



- Notes:**
- Do not scale drawing.
 - Operator shown for pull side double door application.
 - All dimensions are given in inches and millimeters.
 - Recommended thickness for reinforcements in hollow-metal doors and frames should provide a combined material thickness of .164 (4.2) MIN.
 - This template information based upon use of 5 (127) maximum width butt hinges or 3/4 (19) offset pivots.

D6011/D6051 Series Operator Installation Template
for Double Door Pull Side Mount
on 36”(914mm), 42”(1067mm), or 48”(1219mm) leaves (shown on 36” wide leaves)
For Reveal of 1/8” (3mm) max for 6011 or 1/8” (3mm) to 3” (76mm) for 6051

Norton
ASSA ABLOY
www.nortondoorcontrols.com

TEMPLATE NUMBER	REV	DATE
80-7360-1039-020	1	05/20