

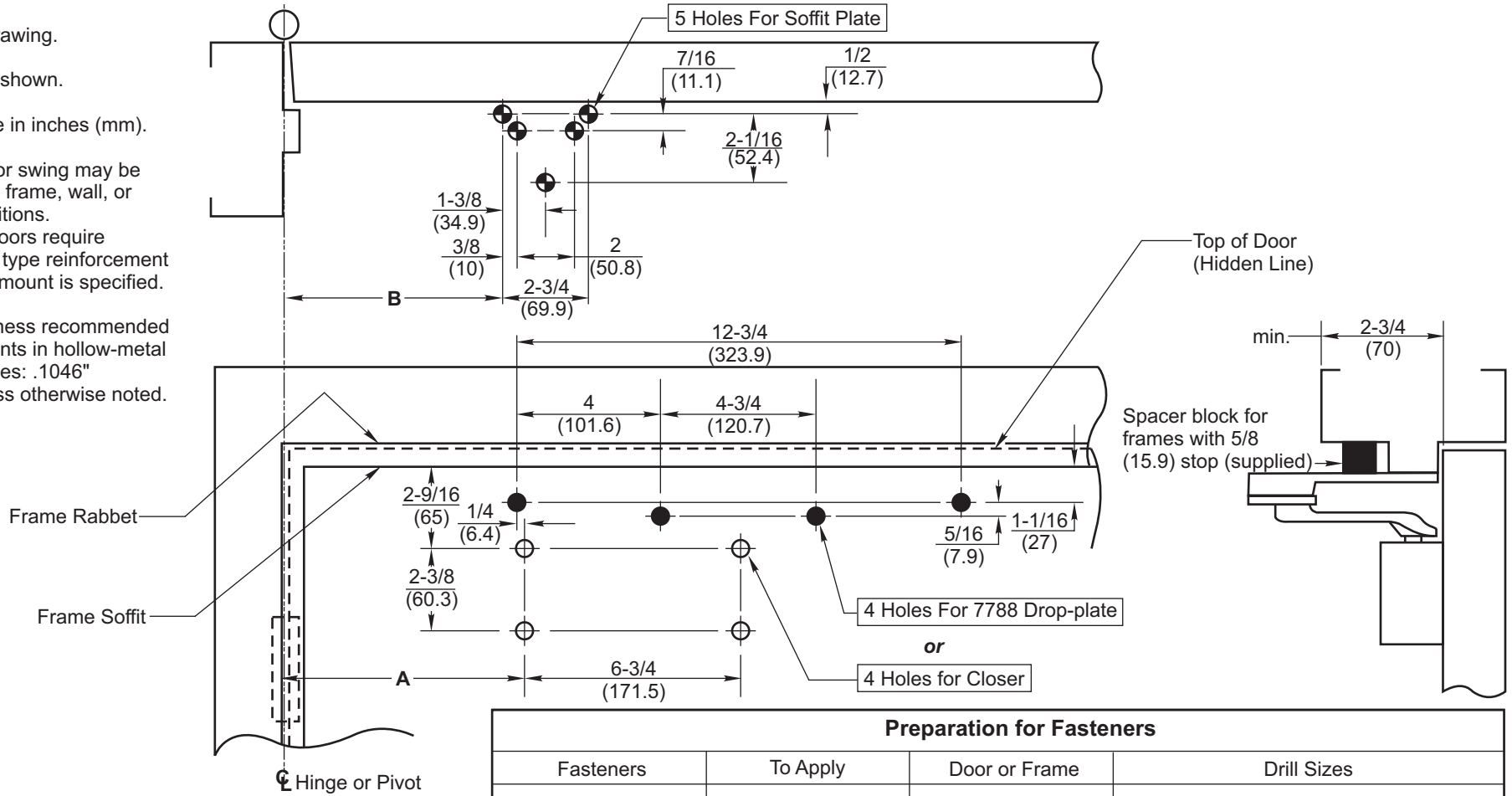
Do not scale drawing.

Left hand door shown.

Dimensions are in inches (mm).

CAUTION: Door swing may be limited by door, frame, wall, or hardware conditions.
 Hollow-metal doors require channel or box type reinforcement when thru-bolt mount is specified.

Minimum thickness recommended for reinforcements in hollow-metal doors and frames: .1046" (2.66mm) unless otherwise noted.



Opening	Dim. "A"		Dim. "B"	
	inches	mm	inches	mm
To 100°	8-3/4	222	9-1/4	235
101° to 130°	7-1/4	184	7-3/4	197
131° to 150°	6-1/4	159	6-3/4	171
151° to 180°	5-1/4	133	5-3/4	146

Preparation for Fasteners			
Fasteners	To Apply	Door or Frame	Drill Sizes
Sex-nuts and bolts	Closer or drop-plate	Hollow-Metal	9/32" (7.00mm) through
		Aluminum or Wood	3/8" (9.50mm) door-face opposite to closer
Self Drill Screws	Soffit-plate	Wood	3/8" (9.50mm) through
		Aluminum	No Drill required
		Metal	drill: #7 (.201" dia.) tap: 1/4-20
Through-bolts and grommet-nuts	Optional	All	9/32" (7.00mm) through; 3/8" (9.50mm) dia. x 3/8" (10mm) deep, door face opposite to closer

PR7500, PR7500H, PR7700, or PR7700H Series Door Closers
With or Without 7788 Drop Plate
Parallel Rigid Installation With Non Hold Open or Hold Open



TEMPLATE NUMBER	REV	DATE
7377-0251	4	11/24