

Do not scale drawing  
 Hand of door as noted  
 Dimensions are in inches  
 (mm.)  
 All dimensions from face  
 of stop.

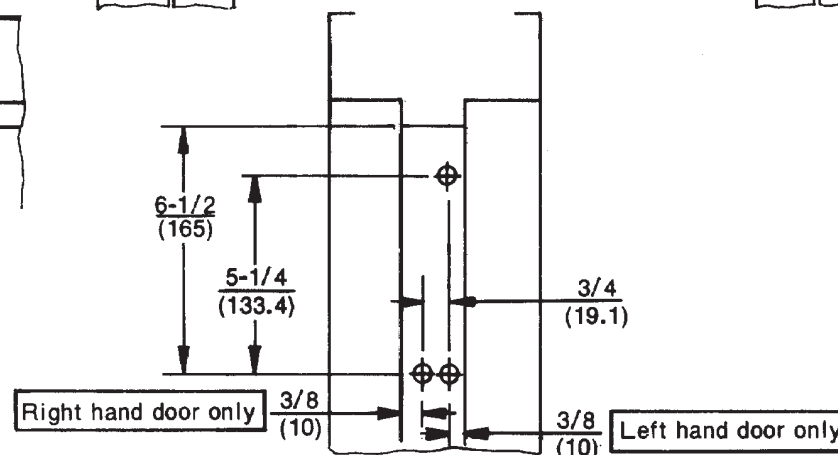
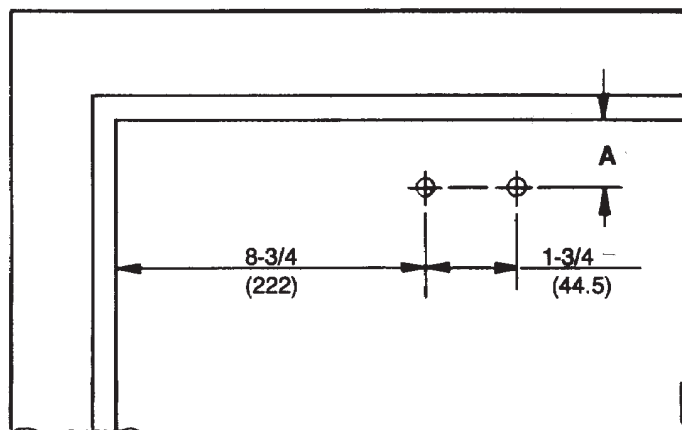
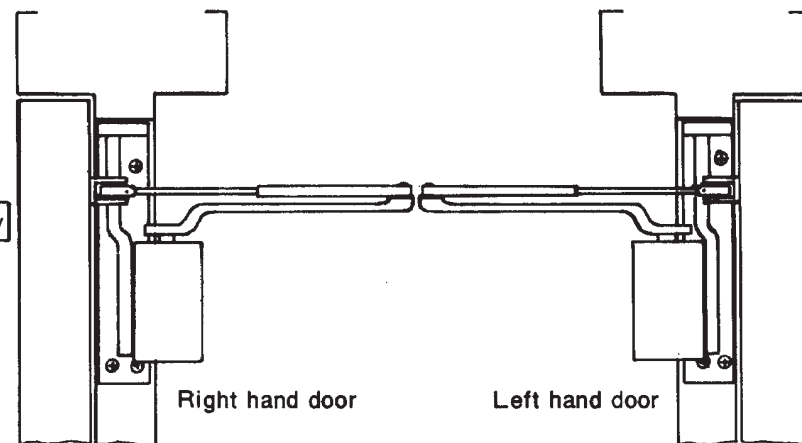
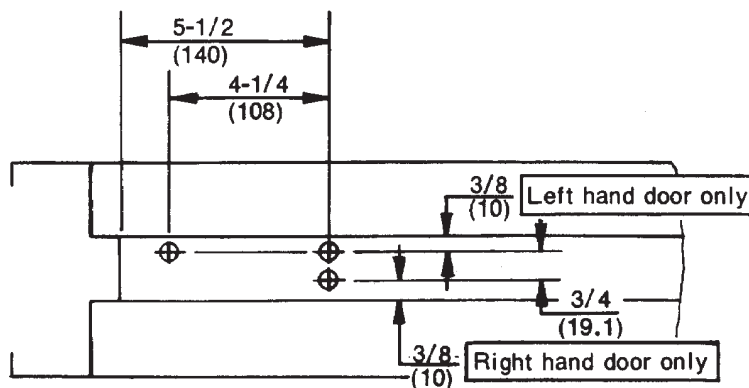
Product application as  
 charted only.

**Caution:** Door swing may  
 be limited by door, frame,  
 wall, or hardware conditions.

Hollow-metal doors require  
 channel or box-type rein-  
 forcement when thru-bolt  
 mount is specified.

Sex-bolts required for  
 wood or plastic faced  
 fire-door mounting.

Minimum thickness recom-  
 mended for reinforcements  
 in hollow-metal doors and  
 frames: .1046" (2.66mm.)  
 unless otherwise noted.



Corner Bracket	Closer Series	Dimension A	
		inches	mm.
7798	7500-7700	3/4	19
7797	7500-7700	1-7/8	48
	7580-7780	2-3/8	60
	7500H-7700H	1-3/4	44

Preparation for Fasteners		
Fasteners	Door or Frame	Drill-Size
#14 x 1/4" (32mm.) type "A" S.M. screw (Std.)	Wood	3/16" (4.30mm.)
	Aluminum	7/32" (5.50mm.)
1/4"-20 machine screw (Standard)	Metal	drill: #7 (.201") tap: 1/4"-20
Sex-nuts and bolts (Optional)	Hollow-metal	9/32" (7.00mm.) through; 3/8" (9.50mm.) door-face opposite to closer
	Aluminum or Wood	3/8" (9.50mm.) through
Through-bolts and grommet-nuts (Optional)	All	9/32" (7.00mm.) through; 3/8" (9.50mm.) dia. x 3/8" (10mm.) deep door-face opposite to closer

**7500, 7500H, 7580, 7700, 7700H, and 7780 Series Door Closers  
 With 7797 or 7798 Corner Bracket  
 Corner Bracket Installation With Non Hold Open or Hold Open Arm**



**ASSA ABLOY**

TEMPLATE NUMBER	REV	DATE
<b>7377-0149</b>	<b>3</b>	<b>12/21</b>