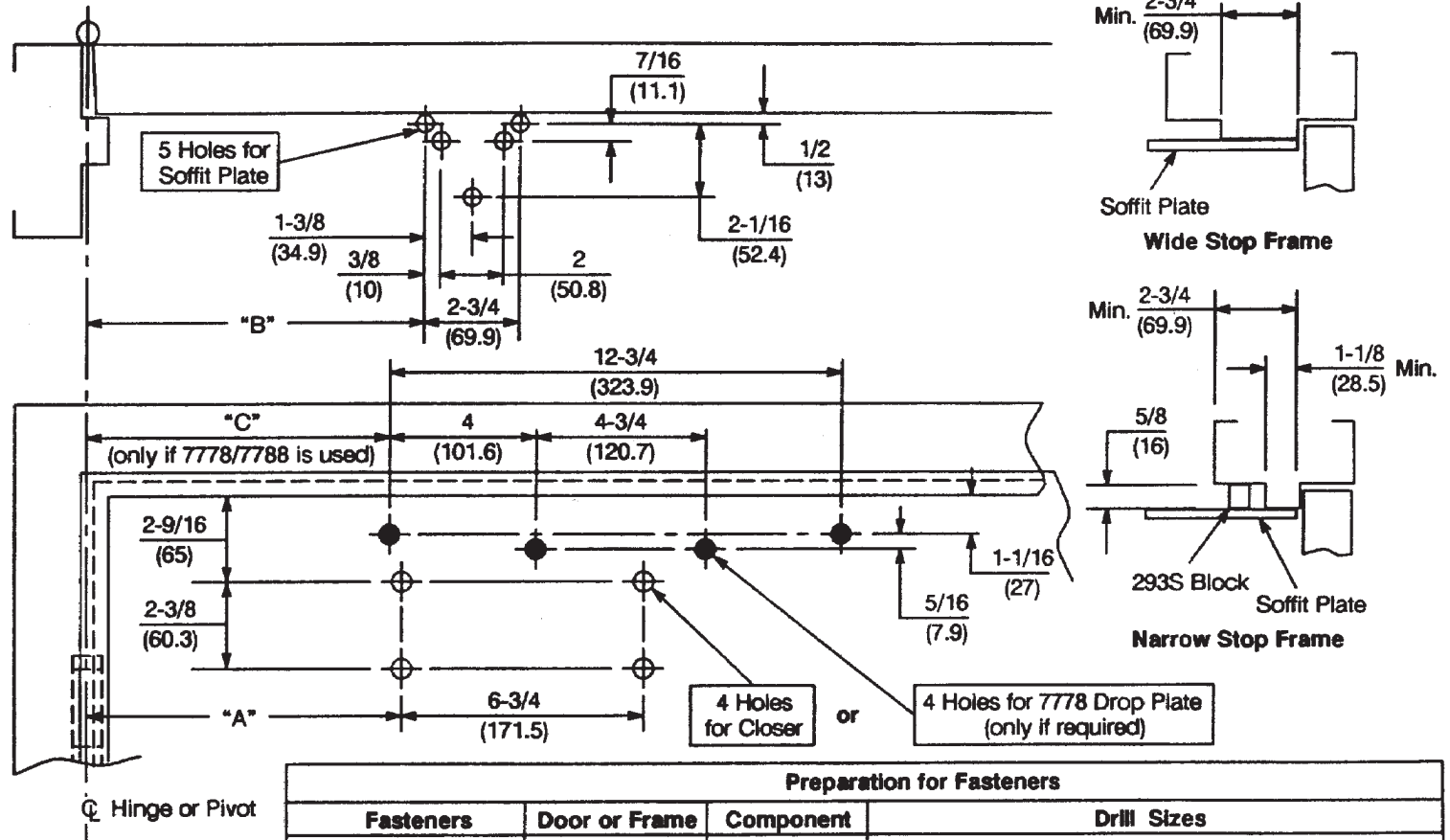


Caution: Door swing may be limited by door, frame, wall or hardware conditions.

Notes:

1. Do not scale drawing.
2. Left hand door shown.
3. Dimensions are in inches (mm).
4. Hollow metal doors require channel or box type reinforcement when thru bolt mount is specified.
5. Minimum thickness recommended for reinforcements in hollow metal doors and frames: .1046" (2.66mm) unless otherwise noted.
6. Hold open function, "T" suffix, is not permitted in a fire-door assembly.
7. Maximum width hinges for this template are 5" (127mm)



Door Opening	Dim. "A"	Dim. "B"	Dim. "C"
85°	10-1/8 (257)	10-5/8 (270)	9-7/8 (251)
90°	9-1/4 (235)	9-3/4 (248)	9 (229.6)
95°	8-5/8 (219)	9-1/8 (232)	8-3/8 (213)
100°	7-7/8 (200)	8-3/8 (213)	7-5/8 (194)
105°	7-3/8 (187)	7-7/8 (200)	7-1/8 (181)
110°	6-3/4 (171)	7-1/4 (184)	6-1/2 (165)

Preparation for Fasteners			
Fasteners	Door or Frame	Component	Drill Sizes
#14 type "A" S.M. screw Arm: 1-1/4" (32mm) Closer: 2-3/4" (70mm)	Wood	Arm	7/32" (5.50mm)
1/4-20 machine screw	Metal	Arm	drill: #7 (.201") tap: 1/4-20
Sex nuts and bolts (SNB)	Hollow Metal	Closer	9/32" (7.00mm) thru; 3/8" (9.50mm) on door or transom face opposite to closer
	Aluminum or Wood		3/8" (9.50mm) thru
Thru bolts and grommet nuts (TBGN)	All	Closer	9/32" (7.00mm) thru; 3/8" (9.50mm) dia. x 3/8" (9.50mm) deep on door or transom face opposite to closer

**CLP-7570, CLP-7770 CloserPlus® Arm Security Door Closer or
 CPS-7570, CPS-7770 CloserPlus Spring™ Arm Security Door Closer
 Parallel Arm Application With or Without 7778 Drop Plate
 Arm Function - Stop Only or Stop & Hold Open ("T" Suffix)
 Power Size 0 for 7570; 2, 3, 4, 5, or 6 for 7770**



TEMPLATE NUMBER	REV	DATE
7377-0625	3	12/21