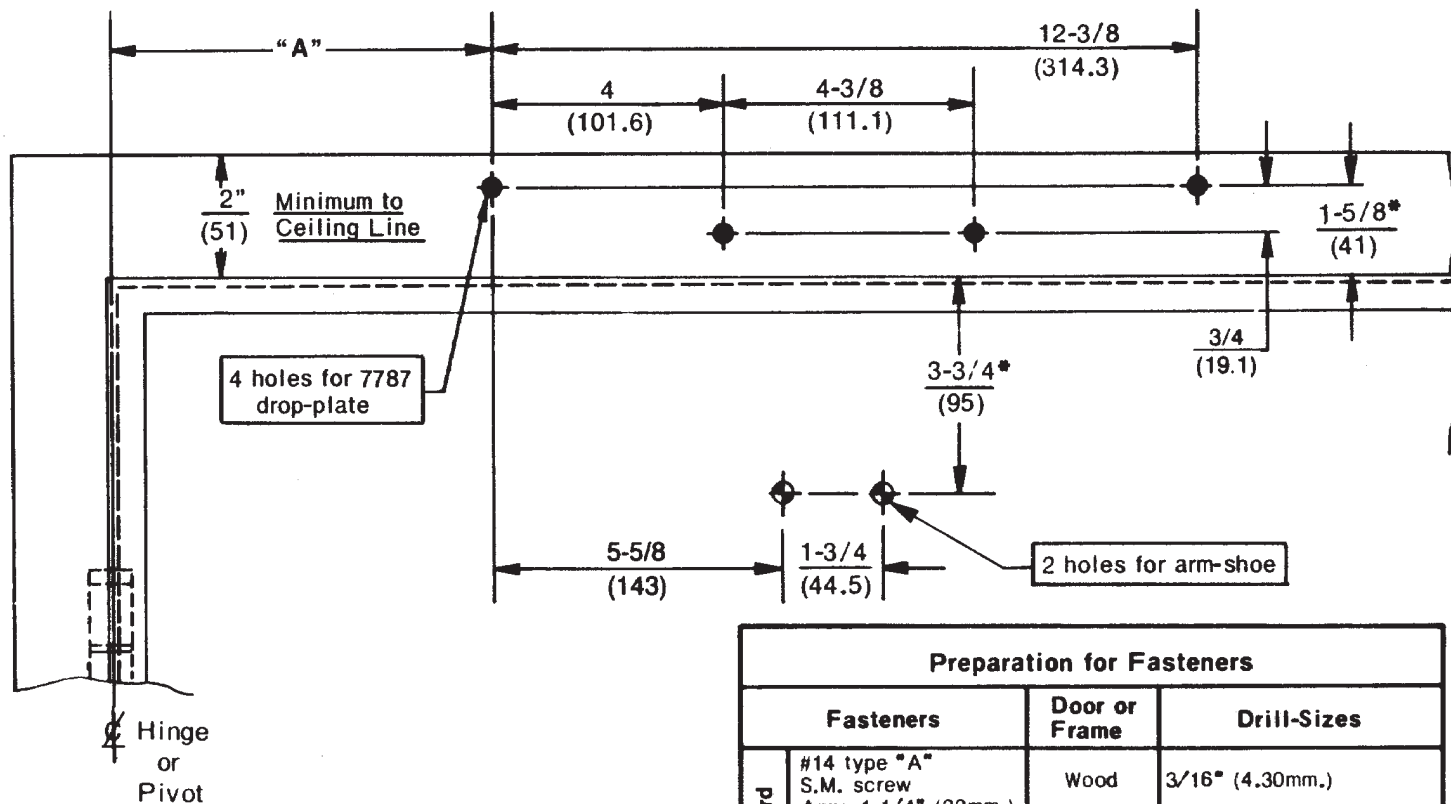


Opening	Dimension "A"	
	inches	mm.
To 100°	7-5/8	194
100° to 120°	6-5/8	168
120° to 150°	4-5/8	117
150° to 180°	4-1/8	105



Do not scale drawing
 Left hand door shown
 Dimensions are in $\frac{\text{inches}}{\text{(mm.)}}$

*Always use frame or transom-rabbit as reference plane, not bottom of stop.

Caution: Door swing may be limited by door, frame, wall, or hardware conditions.

Hollow-metal doors require channel or box-type reinforcement when thru-bolt mount is specified.

Sex-bolts required for wood or plastic faced fire-door mounting.

Minimum thickness recommended for reinforcements in hollow-metal doors and frames: .1046" (2.66mm.) unless otherwise noted.

Preparation for Fasteners			
	Fasteners	Door or Frame	Drill-Sizes
Standard	#14 type "A" S.M. screw Arm: 1-1/4" (32mm.) Closer: 2-3/4" (70mm.)	Wood	3/16" (4.30mm.)
		Aluminum	7/32" (5.50mm.)
	1/4-20 machine-screw	Metal	drill: #7 (.201" dia.) tap: 1/4-20
Optional	Sex-nuts and bolts	Hollow-Metal	9/32" (7.00mm.) through; 3/8" (9.50mm.) on door or transom-face opposite to closer
		Aluminum or Wood	3/8" (9.50mm.) through
	Through-bolts and grommet-nuts	All	9/32" (7.00mm.) through; 3/8" (9.50mm.) dia. x 3/8" (10mm.) deep on door or transom-face opposite to closer

**(J)7500, (J)7500H, JL7500, JL7500H, (J)7700, (J)7700H, JL7700, JL7700H, J7730, and J7730H Series Door Closers
 With 7787 Drop Plate
 Top Jamb Installation With Non Hold Open or Hold Open**



ASSA ABLOY

TEMPLATE NUMBER	REV	DATE
7377-0152	3	12/21