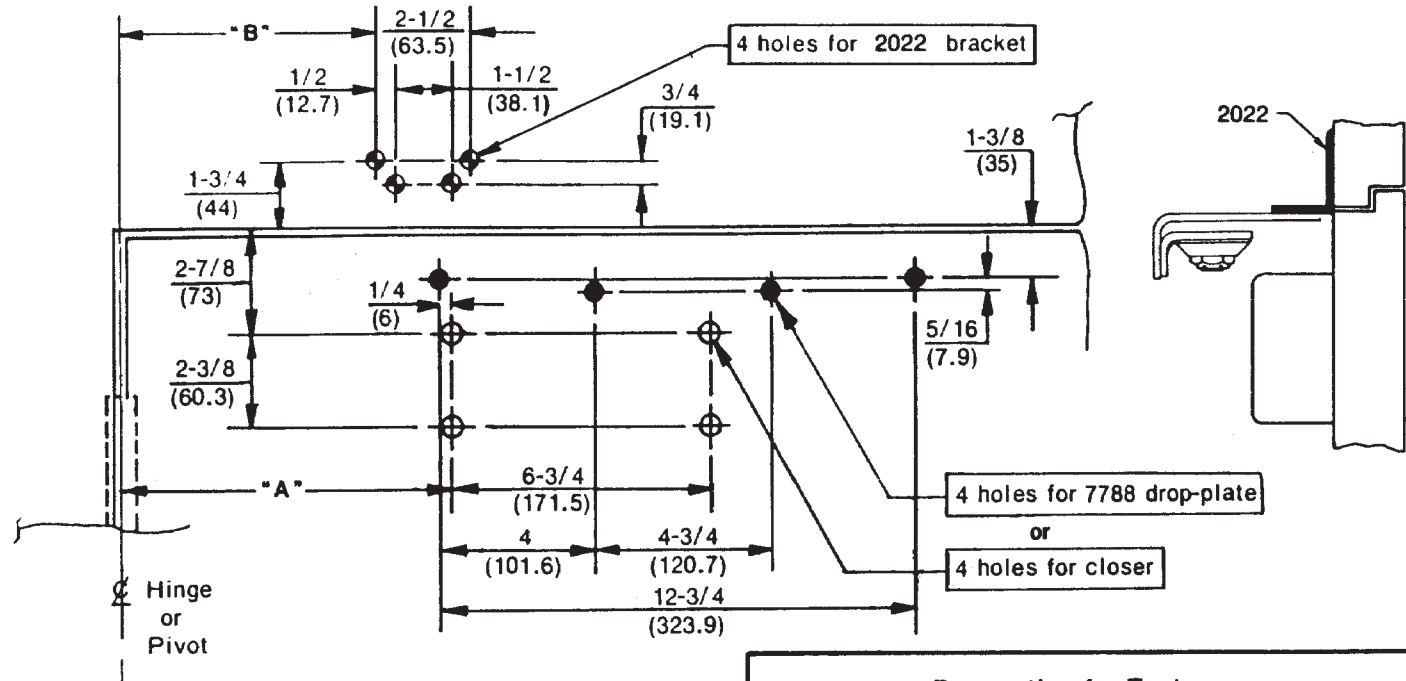


Opening	Dim. "A"		Dim. "B"	
	inches	mm	inches	mm
To 100°	8-3/4	222	9-3/8	238
101° to 130°	7-1/4	184	7-7/8	200
131° to 150°	6-1/4	159	6-7/8	175
151° to 180°	5-1/4	133	5-7/8	149



(opposite to hinge side mounting).

Do not scale drawing

Left hand door shown

Dimensions are in $\frac{\text{inches}}{\text{(mm.)}}$

Caution: Door swing may be limited by door, frame, wall, or hardware conditions.

Hollow-metal doors require channel or box-type reinforcement when thru-bolt mount is specified.

Sex-bolts required for wood or plastic faced fire-door mounting.

Minimum thickness recommended for reinforcements in hollow-metal doors and frames: .1046" (2.66mm.) unless otherwise noted.

Preparation for Fasteners			
	Fasteners	Door or Frame	Drill-Sizes
Standard	#14 type "A" S.M. screw Arm: 1-1/4" (32mm.) Closer: 2-3/4" (70mm.)	Wood	3/16" (4.30mm.)
		Aluminum	7/32" (5.50mm.)
	1/4-20 machine-screw	Metal	drill: #7 (.201" dia.) tap: 1/4-20
Optional	Sex-nuts and bolts	Hollow-Metal	9/32" (7.00mm.) through; 3/8" (9.50mm.) on door or transom-face opposite to closer
		Aluminum or Wood	3/8" (9.50mm.) through
	Through-bolts and grommet-nuts	All	9/32" (7.00mm.) through; 3/8" (9.50mm.) dia. x 3/8" (10mm.) deep on door or transom-face opposite to closer

**P7500H or P7700H Series Door Closers
 With 1628H x 2022 Brackets
 With or Without 7788 Drop Plate
 Parallel Arm Installation With Hold Open**



ASSA ABLOY

TEMPLATE NUMBER	REV	DATE
7377-0212	3	12/21