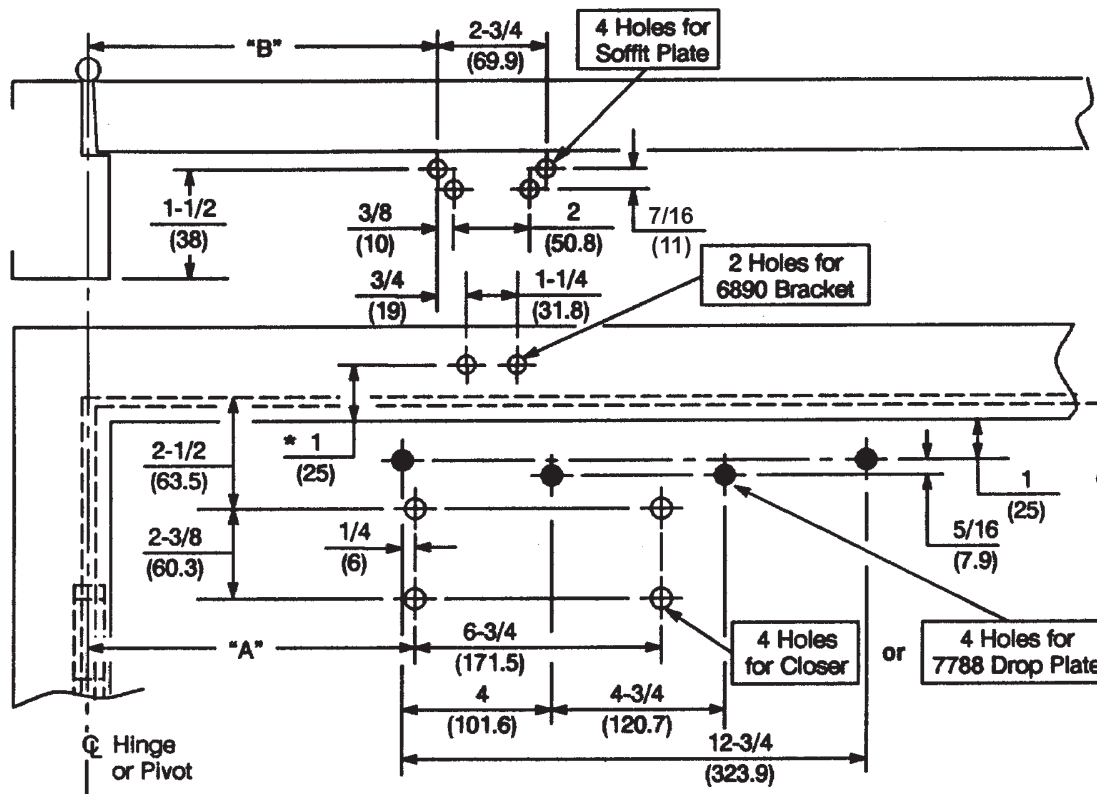


**Caution:** Door swing may be limited by door, frame, wall or hardware conditions.



**Notes:**

1. Do not scale drawing.
2. Left hand door shown.
3. Dimensions are in inches (mm).
4. Hollow metal doors require channel or box type reinforcement when thru bolt mount is specified.
5. Minimum thickness recommended for reinforcements in hollow metal doors and frames: .1046" (2.66mm) unless otherwise noted.

\* This dimension must be located from the same surface that the 2019 soffit plate is mounted to.

Door Opening	Dim. "A"	Dim. "B"
To 100°	8-3/4 (222)	9-1/4 (235)
101° to 130°	7-1/4 (184)	7-3/4 (197)
131° to 150°	6-1/4 (159)	6-3/4 (171)
151° to 180°	5-1/4 (133)	5-3/4 (146)

Preparation for Fasteners			
Fasteners	To Apply	Door or Frame	Drill Sizes
#14 x 1-1/4 (32mm) type "A" Sheet Metal screw	Soffit Plate	Wood	7/32" (5.50mm)
		Aluminum	7/32" (5.50mm)
1/4-20 machine screw		Metal	drill: #7 (.201" dia.) tap: 1/4-20
Sex nuts and bolts	Closer or Drop Plate	Hollow Metal	9/32" (7.00mm) thru; 3/8" (9.50mm) door face opposite to closer
		Aluminum or Wood	3/8" (9.50mm) thru
Thru bolts and grommet nuts	Optional	All	9/32" (7.00mm) thru; 3/8" (9.50mm) dia. x 3/8" (10mm) deep, door face opposite to closer

**PR7500, PR7500H, PR7700 or PR7700H Series Door Closers  
 With 6890 Bracket  
 With or Without 7788 Drop Plate  
 Parallel Rigid Installation With Non Hold Open or Hold Open**



**ASSA ABLOY**

TEMPLATE NUMBER	REV	DATE
<b>7377-0253</b>	<b>3</b>	<b>12/21</b>