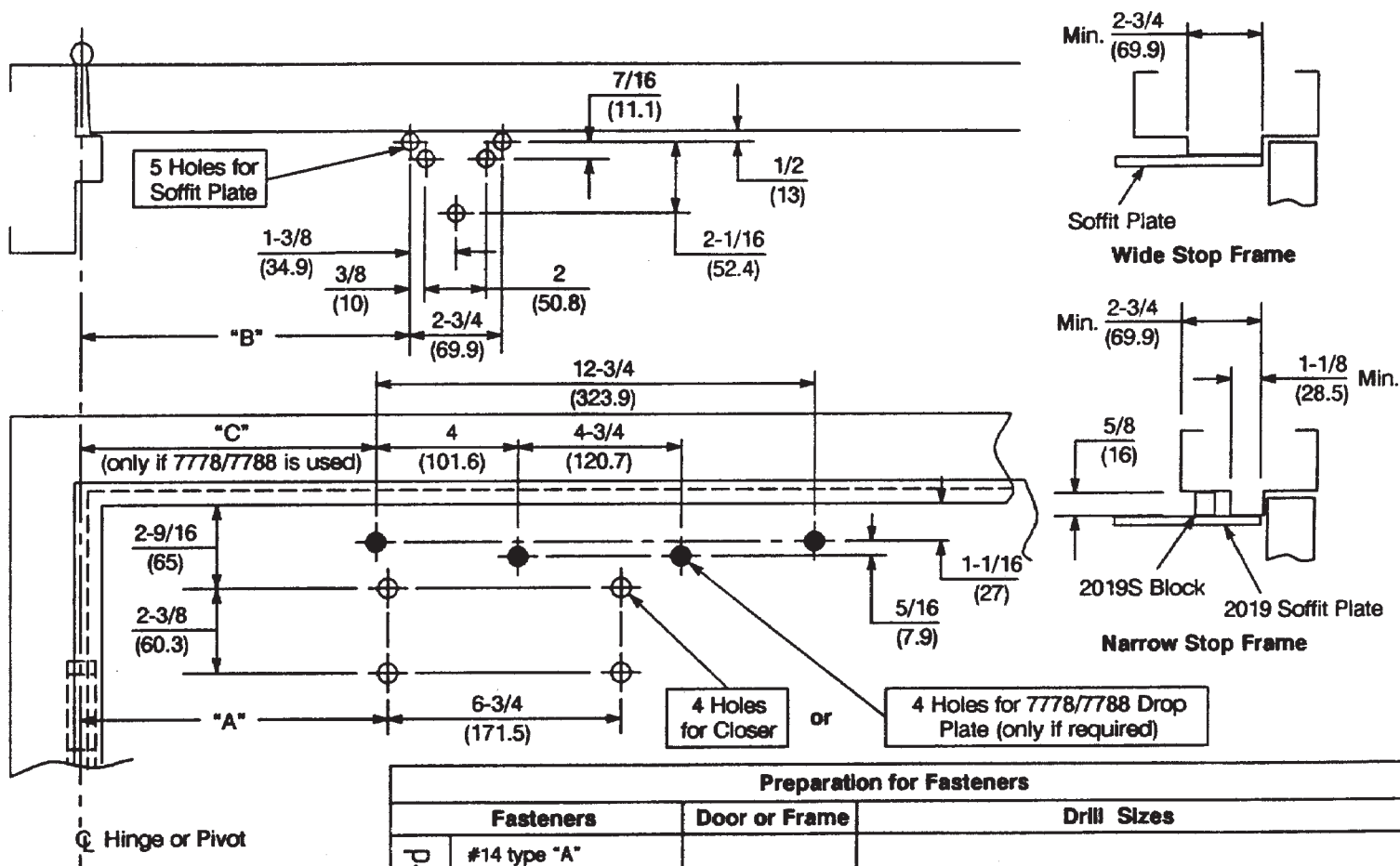


Caution: Door swing may be limited by door, frame, wall or hardware conditions.

Notes:

1. Do not scale drawing.
2. Left hand door shown.
3. Dimensions are in inches (mm).
4. Hollow metal doors require channel or box type reinforcement when thru bolt mount is specified.
5. Minimum thickness recommended for reinforcements in hollow metal doors and frames: .1046" (2.66mm) unless otherwise noted.



Door Opening	Dim. "A"	Dim. "B"	Dim. "C"
To 100°	8-5/8 (219)	9-1/8 (232)	8-3/8 (213)
101° to 120°	7-7/8 (200)	8-3/8 (213)	7-5/8 (194)
121° to 180°	6-3/4 (171)	7-1/4 (184)	6-1/2 (165)

Maximum hinge width 5" (127mm) for doors swinging beyond 150°.

Preparation for Fasteners			
	Fasteners	Door or Frame	Drill Sizes
Standard	#14 type "A" S.M. screw Arm: 1-1/4" (32mm) Closer: 2-3/4" (70mm)	Wood	7/32" (5.50mm)
	1/4-20 machine screw	Metal	drill: #7 (.201") tap: 1/4-20
Optional	Six nuts and bolts	Hollow Metal	9/32" (7.00mm) thru; 3/8" (9.50mm) on door or transom face opposite to closer
		Aluminum or Wood	3/8" (9.50mm) thru
	Thru bolts and grommet nuts	All	9/32" (7.00mm) thru; 3/8" (9.50mm) dia. x 3/8" (9.50mm) deep on door or transom face opposite to closer

**PR7570 and PR7770 Series Security Door Closer
 With or Without 7788 Drop Plate or
 Parallel Rigid Arm Non-Hold Open Installation**



ASSA ABLOY

TEMPLATE NUMBER	REV	DATE
7377-0621	3	12/21