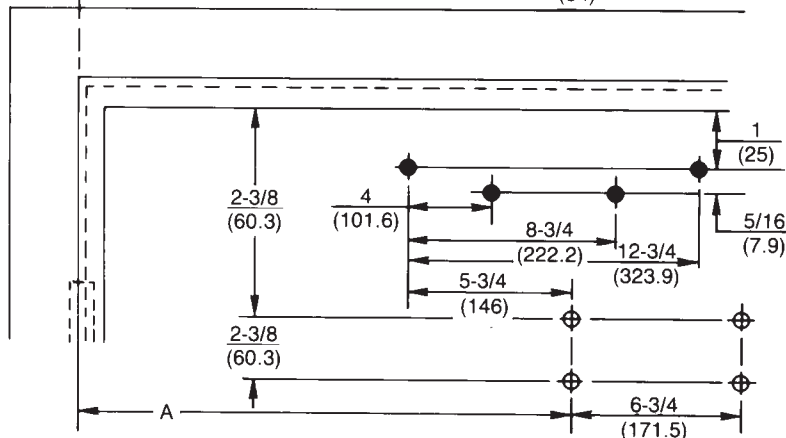


◆ 7788 drop plate mounting holes only



Notes:

- Do not scale drawing.
- All dimensions shown in inches (mm.).
- Left hand door shown.
- Caution: Hollow metal doors require channel or box type reinforcement.

Preparation for Fasteners			
Fasteners	Application	Door or Frame	Drill Sizes
Sex-nuts and bolts	Closer Drop plate	Hollow Metal	9/32" (7.00mm.) through 3/8" (9.50mm.) door face opposite to closer
		Aluminum or wood	3/8" (9.50mm.) through
#14 x 1-1/4" (32mm.) type "A" S.M. screws	Soffit plate 6190 Bracket	Wood	3/16" (4.30mm.)
1/4-20 machine screw		metal	drill: #7 (.201" dia.) tap: 1/4-20
Through bolts and grommet nuts	Optional	All	9/32" (7.00mm.) through 3/8" (9.50mm.) dia. x 3/8" (10mm.) deep, door face opposite to closer

Door Opening Angle		Dimensions*							
Hold Open**	Dead Stop	Butts and Offset Pivots				Center Pivots			
		Dimension A		Dimension B		Dimension A		Dimension B	
		Inches	mm.	Inches	mm.	Inches	mm.	Inches	mm.
85°	90°	10¼	260	10½	267	11¼	286	11½	292
90°	95°	9⅝	244	9⅞	251	10½	267	10¾	273
95°	100°	9⅞	232	9⅞	238	10	254	10¼	260
100°	105°	8¾	222	9	229	9½	241	9¾	248
105°	110°	8⅞	213	8⅝	219	9⅞	232	9⅞	238
110°	115°	8	203	8¼	210	8¾	222	9	229

* "A" and "B" dimensions measured from centerline of hinge or pivot.
 ** Door must be free to swing up to 5° beyond hold open position.

**Unitrol® with 6191 Reinforcing Kit
 Series UNI-7500 & UNI-7700
 Doors 28"-32" (0.70-0.80m) Wide**

**Parallel Arm Installation Template
 Stop Only or Hold Open Unitrol®
 Backcheck or Delayed Action Door Closer
 With or Without 7788 Drop Plate**



TEMPLATE NUMBER	REV	DATE
7377-1357	3	12/21