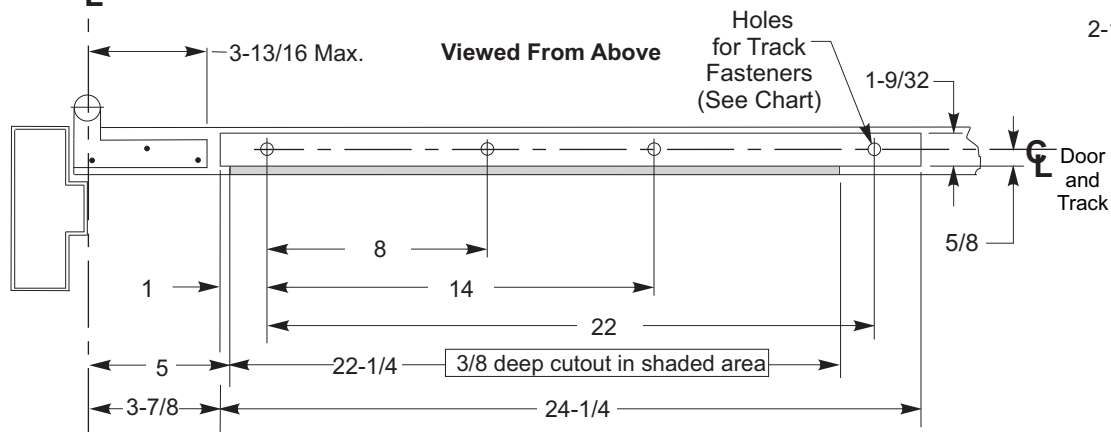
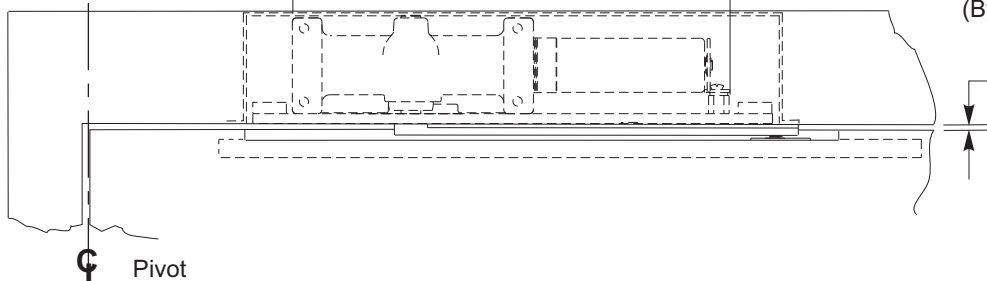
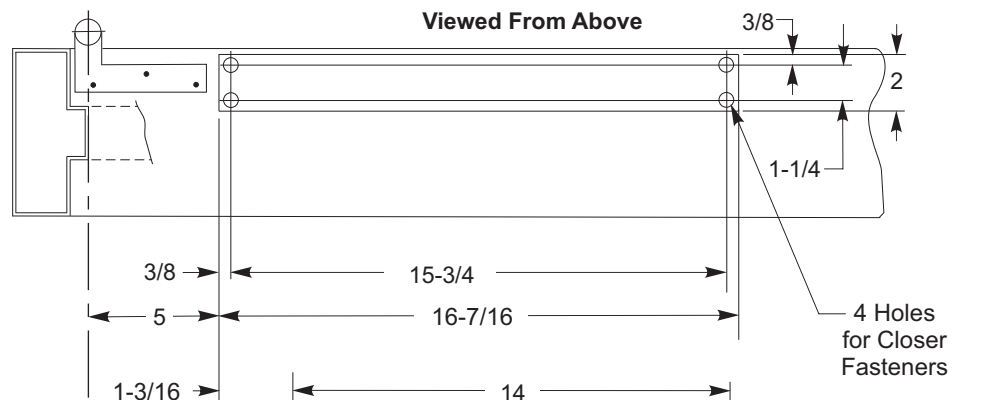


NOTES:

- Do not scale drawing.
- Left hand door shown.
- Hardware dimensions shown (not cutout).
- Dimensions are in inches (see chart for metric conversion).
- Minimum thickness recommended for reinforcements in hollow metal doors and frames: .1046" (2.66mm.) unless otherwise noted.
- Maximum door swing is 95 degrees. Auxiliary door stop (not supplied) is required for this application.
- Standard track is 24 inches long.
- For doors less than 29 inches wide, contact factory for modification requirements.



METRIC CONVERSION CHART	
Inches	mm.
1/8	3.2
1/4	6.4
3/8	9.5
5/8	15.9
1	25.4
1-3/16	30.1
1-1/4	31.8
1-3/4	44.5
2	50.8
2-1/4	57.2
3-3/4	95.3
3-13/16	96.8
3-7/8	98.4
5	127.0
8	203.2
14	355.6
15-3/4	400.0
16-7/16	417.5
22	558.8
22-1/4	565.1
24	609.6
24-1/4	615.9
29	736.6

Fastener	Use	Preparation
1/4-20 machine screw	metal frame and metal door	#7 (.201" dia.) or 5.10mm. drill 1/4-20 tap
#14 wood screw	wood door	7/32" or 5.5 mm. drill

**7900P Series Door Closers x 790 Fire Bloc
 For Use on Doors with 3/4" Offset Pivots
 Non Hold Open Installation**



TEMPLATE NUMBER	REV	DATE
7379-0255	3	12/21