

8000 Series Door Closer

Unitrol® Arm

Non-Hold Open and Hold Open

Installation Instructions

⚠ WARNING

This product can expose you to lead which is known to the state of California to cause cancer and birth defects or other reproductive harm. For more information go to: www.P65warnings.ca.gov.

Non-Hold Open Arm Models
UNI8101, UNI8301, UNI8501

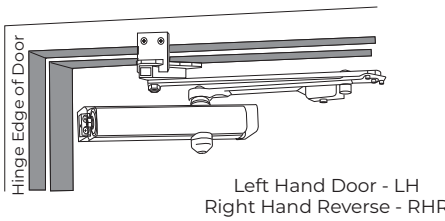
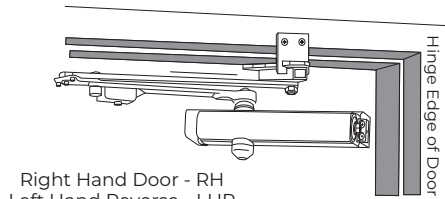
Hold Open Arm Models
UNI8101H, UNI8301H, UNI8501H

READ AND FOLLOW ALL INSTRUCTIONS. SAVE THESE INSTRUCTIONS.

CAUTION An incorrectly installed or improperly adjusted door closer can cause property damage or personal injury. These instructions should be followed to avoid the possibility of misapplication or misadjustment. **CAUTION**

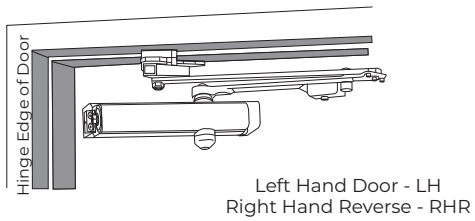
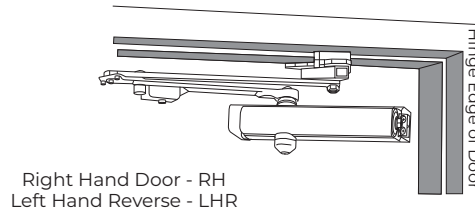
Standard Frame

1-7/8 to 4-5/8 Frame Reveals (Uses 6190 Bracket)
Bracket illustration page 4
Door and frame preparation page 2



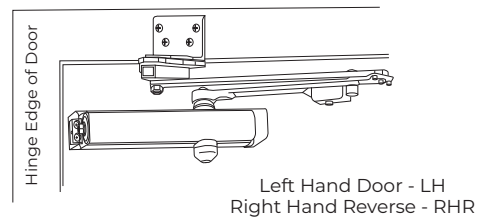
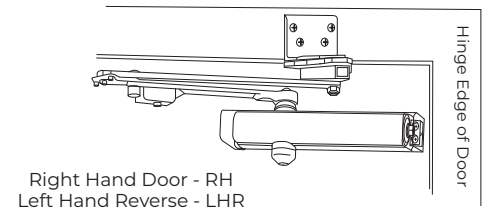
Deep Frame

Frame Reveals Over 4-5/8 (Uses 6191 Clamp Kit)
Bracket illustration page 4
Door preparation page 2
Frame preparation page 3



Flush Transom

Flush Partitions (Uses 2022 Bracket)
Bracket illustration page 4
Door preparation page 2
Frame preparation page 3

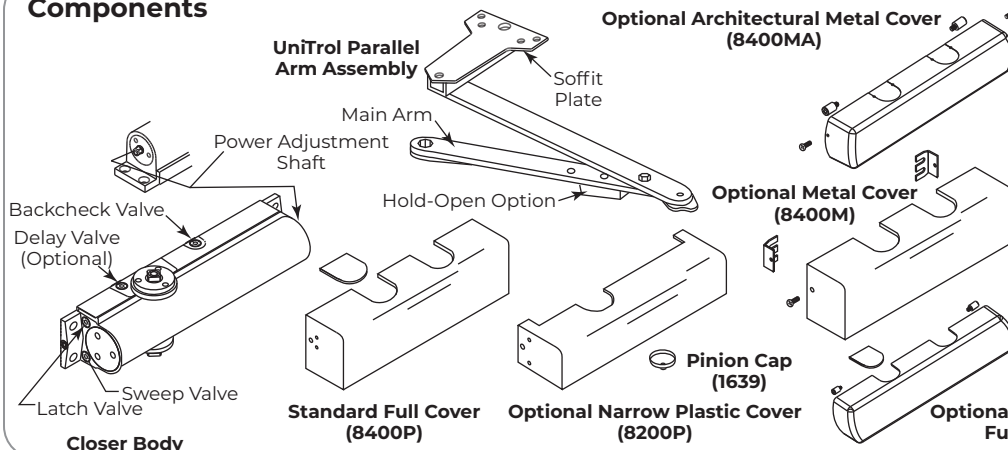


NOTE: "DA" suffix (Delayed Action) is an optional feature, "H" suffix indicates Hold Open Arm.

NOTES:

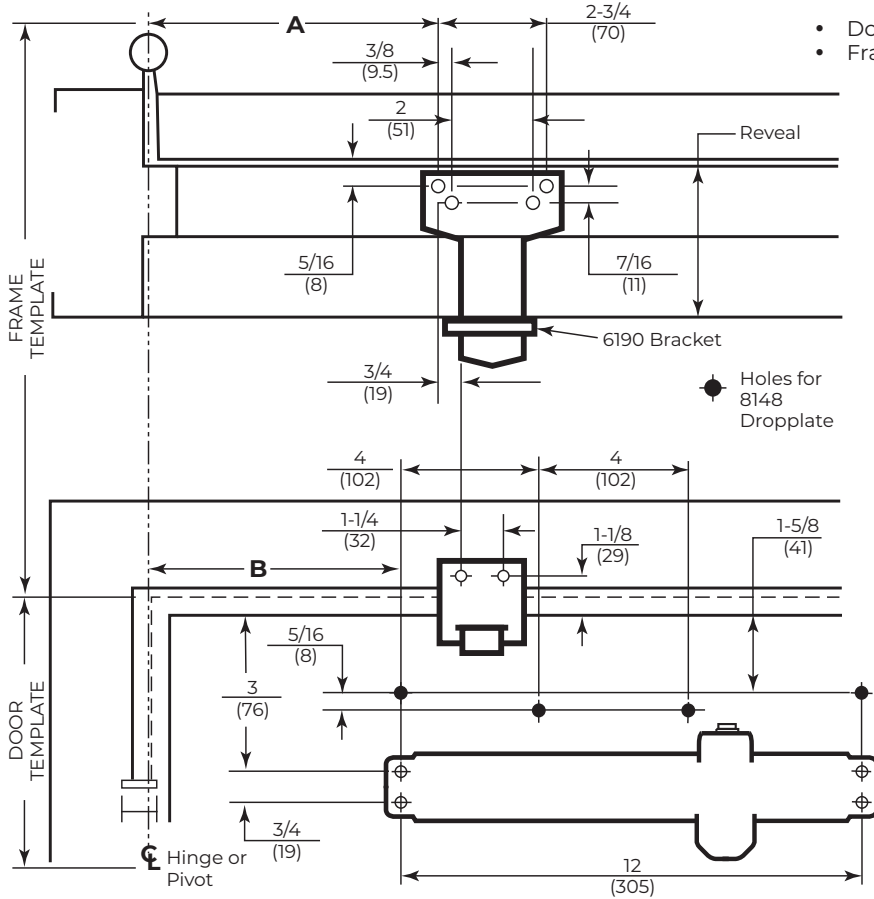
- For special applications a separate door and frame preparation template is packed with these instructions.
- Use this instruction sheet for installation sequence and closer adjustments only.
- It is recommended that the door on which the door closer will be installed be hung on ball bearing hinges. Door must swing freely.
- Door and Frame must be properly reinforced, or use of special fasteners employed, to prevent the mounting screw from pulling out.
- All dimensions are given in inches with corresponding metric dimensions (mm) in parenthesis.

Components



Door Width	Arm Stamping	
	Non Hold Open	Hold Open
28" - 32" (0.70 - 0.80m)	6100-11 11-6100-0235	6100-1 11-6100-0232
33" - 41" (0.70 - 0.80m)	6100-13 11-6100-0236	6100-3 11-6100-0233
42" - 48" (0.70 - 0.80m)	6100-14 11-6100-0237	6100-4 11-6100-0234

Door Template Typical for All Installations: Frame Template for 1-7/8 to 4-5/8 Reveals



- Door template is typical for all installations.
- Frame template must be selected according to frame reveal:

Frame Template at right

Frame Reveals 1-7/8 (48) to 4-5/8 (117)
(Uses 6190 Bracket)
Bracket Illustration - page 4



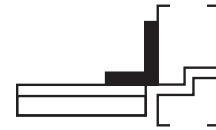
Frame Template: page 3

Frame Reveals Over 4-5/8 (117)
(Uses 6191 Clamp Kit)
Bracket Illustration - page 4



Frame Template: page 3

Frame Reveals 0 to 1/8 (0 to 3)
Flush Partitions (Uses 2022 Bracket)



Inches	mm	Inches	mm	Inches	mm
5/16	7.9	3-1/4	83	8-7/8	225
3/8	9.5	3-5/8	90	9-1/4	235
7/16	11.1	4	101.6	9-3/4	248
1/2	12.7	4-3/8	111	10-1/8	257
3/4	19.1	4-1/2	114	10-3/8	264
1-1/8	29	4-7/8	124	10-1/2	267
1-1/4	31.8	5-1/8	130	11	279
1-1/2	38.1	5-1/4	133	11-1/2	292
1-5/8	41	5-3/4	146	12	305
1-3/4	44	6-1/4	159	12-1/8	308
1-7/8	48	6-3/4	171	12-1/2	318
2	50.8	7-1/8	181	12-3/4	324
2-1/8	54	7-1/2	191	13-5/8	346
2-1/2	63.5	7-5/8	194	14-1/4	362
2-3/4	69.9	8-1/8	206	15-1/8	384
2-7/8	73	8-1/4	210		
3	76	8-1/2	216		

Preparation for Fasteners			
Fasteners		Door or Frame	Drill-Sizes
Standard	Self-Drilling Screw	Aluminum or Metal	No drill required
		Wood	3/16" (4.30mm)
	1/4"-20 Machine Screw	Metal	Drill: #7 (0.201" dia)
Optional	Sleeve nuts and bolts	Hollow Metal	9/32" (7mm) through; 3/8" (9.5mm) door face opposite of closer
		Aluminum or Wood	3/8" (9.5mm) through
	Through-bolts and grommet-nuts	All	9/32" (7mm); 3/8" (9.5mm) dia. x 3.8" (9.5mm) deep on door face opposite of closer

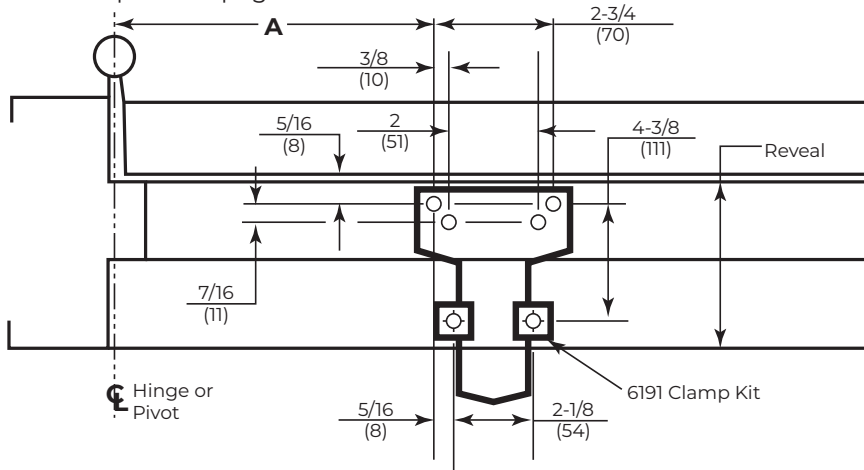
Dimensions for Doors 28" to 32" Wide					
Opening		Dimension A		Dimension B	
Hold Open	Stop	Inches	mm.	Inches	mm.
85°	90°	10-3/8	264	5-1/8	130
90°	95°	9-3/4	248	4-1/2	114
95°	100°	9-1/4	235	4	102
100°	105°	8-7/8	225	3-5/8	92
105°	110°	8-1/2	216	3-1/4	83
110°	115°	8-1/8	206	2-7/8	73

Dimensions for Doors 33" to 41" Wide					
Opening		Dimension A		Dimension B	
Hold Open	Stop	Inches	mm.	Inches	mm.
85°	90°	12-3/4	324	7-1/2	191
90°	95°	12	305	6-3/4	171
95°	100°	11-1/2	292	6-1/4	159
100°	105°	11	279	5-3/4	146
105°	110°	10-1/2	267	5-1/4	133
110°	115°	10-1/8	257	4-7/8	124

Dimensions for Doors 42" to 48" Wide					
Opening		Dimension A		Dimension B	
Hold Open	Stop	Inches	mm.	Inches	mm.
85°	90°	15-1/8	384	9-3/4	248
90°	95°	14-1/4	362	8-7/8	225
95°	100°	13-5/8	346	8-1/4	210
100°	105°	13	330	7-5/8	194
105°	110°	12-1/2	318	7-1/8	181
110°	115°	12-1/8	308	6-3/4	171

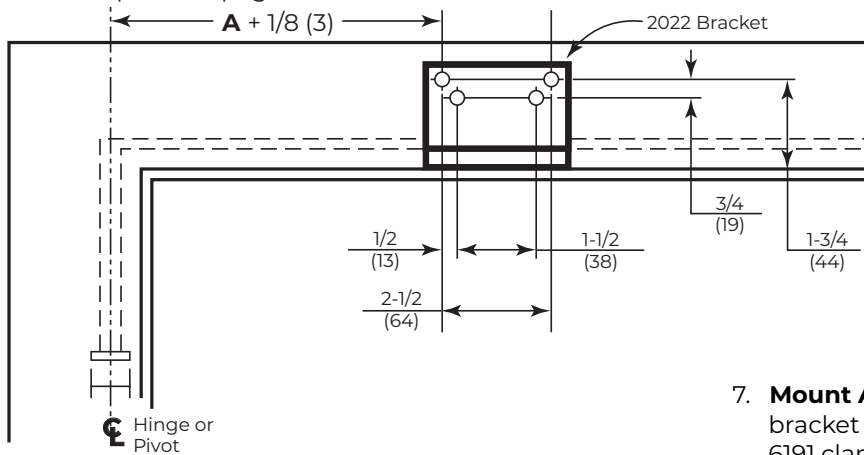
Frame Template for Reveals Over 4-5/8:

Door Template on page 2.

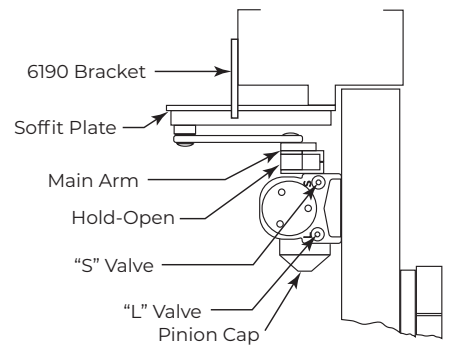
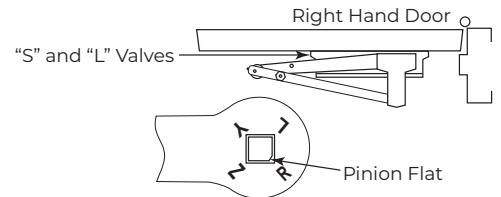
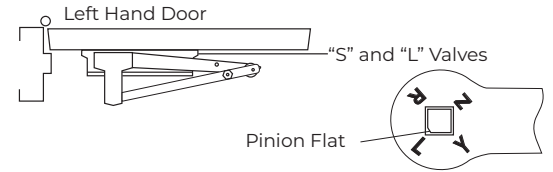


Frame Template for Flush Partitions:

Door Template on page 2.



Typical Installation



Installation Sequence

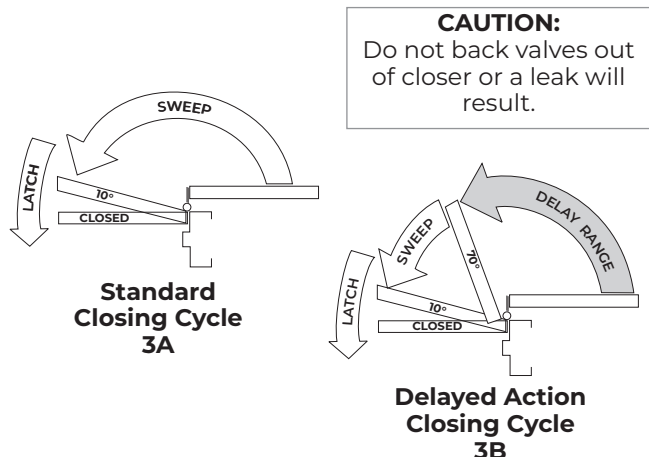
NOTE: Architectural Covers CAN NOT be used for doors swinging over 120° using parallel mount.

- Read Front Page.** Installations and component identification are on this page. Arm assembly must be correct for width of door, see chart.
- Select Correct Door and Frame Template Combination.** Refer to the Template Information on page 2 and above.
- Mark Location of Mounting Holes.** Use dimensions for hold open or door stop angle desired. Mark position of 4 holes on door for closer (or drop plate) and 6 holes on frame for soffit plate (or 4 for 2022 angle bracket).
- Prepare Holes for Fasteners.** Refer to the Preparation for Fasteners chart on page 2.
- Set closer average power.** Use the information in the Power Adjustment Chart on page 4.
- Mount Closer to Door.** Drop plate first, if used. Place end with "S" and "L" valves toward the lock edge of the door. (Slip clips for optional full metal cover, 8400M, under closer feet, if this cover is used.)
- Mount Arm to Frame.** Fasten soffit plate (or 2022 angle bracket if flush partition) to frame. Mount 6190 bracket or 6191 clamps to reinforce soffit plate. Or fasten 2022 bracket to frame and then soffit plate to 2022 bracket.
- Install Arm on Pinion Shaft.** Close valves "S" and "L". Rotate pinion over 45° to align main arm letter "R" (right hand) or "L" (left hand) with pinion flat. Fasten with arm screw. See "Typical Installation" figure above right. Re-open valves "S" and "L".
- Adjust Closer.** Refer to "Adjustments" on page 4.
- Install Cover and Pinion Cap, if required.**
 - 8400 Full Cover:** Slide cover insert into the un-used cutout in cover. Install cover using screws provided.
 - 8200P Narrow Cover:** Install cover using screws provided. Install pinion cap onto pinion shaft by hand or with a Phillips screw driver - DO NOT OVER TIGHTEN.
 - 8400M Full Metal Cover:** Fasten cover to mounting clips with screws provided.
 - 8400MA Metal Architectural Cover:** Remove cover insert where pinion is located. Install standoffs in ends of closer. Install cover using screws provided.
 - 8400A Plastic Architectural Cover:** Slide cover insert into the un-used cutout in cover. Install standoffs in ends of closer. Snap cover over standoffs.

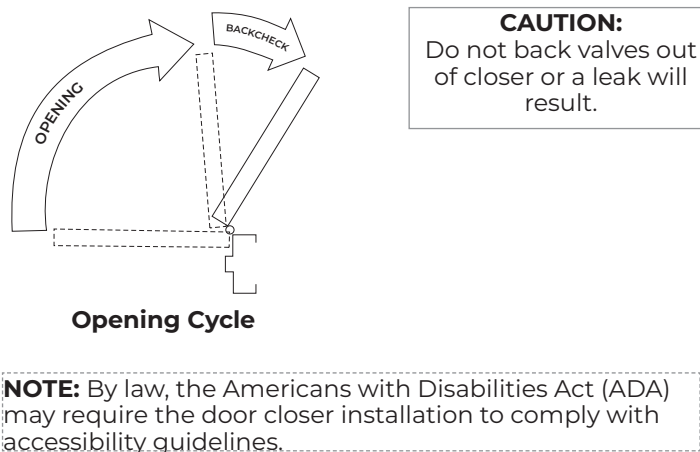
The ASSA ABLOY Group is the global leader in access solutions. Every day we help people feel safe, secure and experience a more open world.

Adjustments

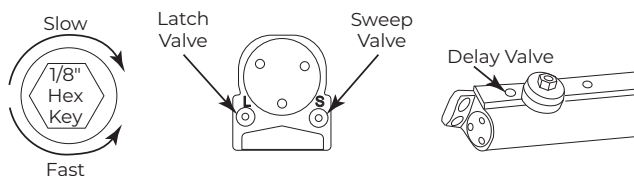
Closing Speed Controls



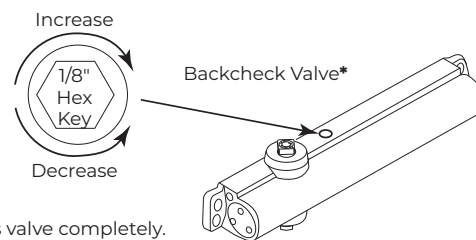
Opening Door Control



Closing Speed Controls



Backcheck Control

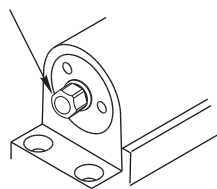


*Never close this valve completely.

Closing Power Controls

Use 5/16" socket or adjustable wrench for adjustment

To increase power, turn Spring Adjustment shaft clockwise. A total of twenty (20) 360° turns of the nut will provide maximum power.

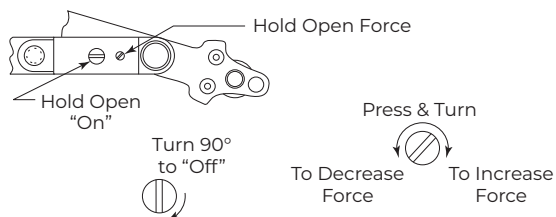


Power Adjustment Chart

DOOR	PARALLEL ARM INSTALLATION	*	MAXIMUM DOOR SIZE			
			28"-32" (70cm-80cm)	33"-41" (85cm-100cm)	42"-48" (105cm-120cm)	Max. # of turns
INT	UNI8301/ UNI8501	Full 360° turns of Power Adjustment Shaft	7	10	16	20
EXT			9	12	18	20

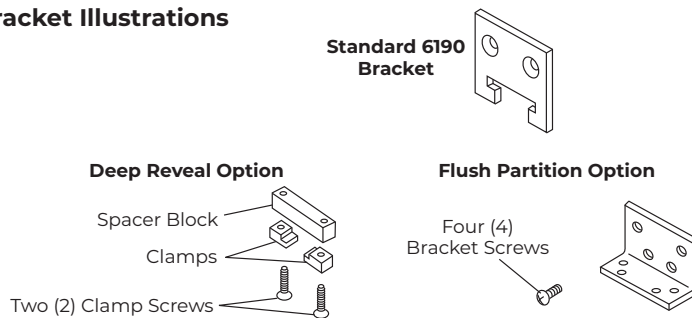
*Twenty (20) 360° Turns Maximum Available

Hold Open Option



The Hold Open option is found at the arm elbow. To select hold open "on", hold open "off" or to adjust the hold open force, use a flat head screwdriver as illustrated.

Bracket Illustrations



Technical Product Support:
Monroe, NC 28112 USA
Phone: 877.974.2255 ext: 2
Techsupport.NortonRixson@assaabloy.com
NortonRixson.com

Norton Rixson is a brand associated with ASSA ABLOY Accessories and Door Controls Group, Inc., an ASSA ABLOY Group company. Copyright © 2004, 2014, 2023, ASSA ABLOY Accessories and Door Controls Group, Inc. All rights reserved. Reproduction in whole or in part without the express written permission of ASSA ABLOY Accessories and Door Controls Group, Inc. is prohibited.