

993M Door Release



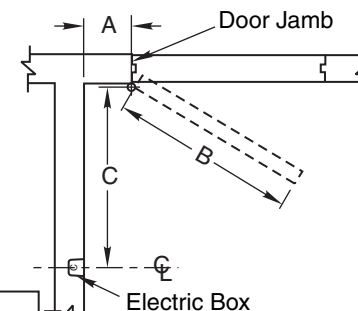
TEMPLATE NUMBER	SHEET	REV	DATE
DR100235	1 of 2	4	06/22

Location of Electric Box

- To locate Electric Box use table below.
- Determine door width (Dim. "B"). Measure pivot centerline to wall (Dim. "A"). Find dimension "C" in table.
 Example: Pivot centerline to wall ("A") = 10" (25.4cm)
 Door Width ("B") = 36" (91.4cm)
 Electric Box Centerline ("C") = 32-1/2" (82.5cm)
- If "A" or "B" falls between the numbers listed in table allow for difference.

- Example: Pivot centerline to wall ("A") = 13" (33cm)
 Door Width ("B") = 35" (88.9cm)
 Electric Box Centerline ("C") = 31-1/2" (80cm)
- If dimensions "A" and "B" intersect in shaded area of table **DO NOT INSTALL ELECTRIC BOX**. The degree of door opening will not permit proper alignment between armature and wall magnet.
 - Height to be determined by others. Suggested height is not over 6'0" (1.8m).
 - Check degree of door opening in table and coordinate with door closers and other door hardware.
 - Total projection of door hardware must not project more than 1-3/16" (30.2mm) on pull side of door.

Location of Electric Box



"A" – Pivot Centerline to Wall
 "B" – Door Width
 "C" – Pivot Centerline to Electric Box Centerline

Dim. "A"	Door Width "B"																							
	28" (711)		30" (762)		32" (813)		34" (864)		36" (914)		38" (965)		40" (1016)		42" (1067)		44" (1118)		46" (1168)		48" (1219)			
	"C"	Deg.	"C"	Deg.	"C"	Deg.	"C"	Deg.	"C"	Deg.	"C"	Deg.	"C"	Deg.	"C"	Deg.	"C"	Deg.	"C"	Deg.	"C"	Deg.		
2" (51)	24-3/4 (629)	84°	26-3/4 (679)	84°	28-3/4 (730)	85°	30-3/4 (781)	85°	32-3/4 (832)	85°	34-3/4 (883)	86°	36-3/4 (933)	86°	38-3/4 (984)	87°	40-3/4 (1035)	87°	42-3/4 (1086)	87°	44-3/4 (1137)	87°		
4" (102)	25" (635)	89°	27" (686)	89°	28-7/8 (733)	89°	30-7/8 (784)	89°	32-7/8 (835)	89°	34-7/8 (886)	89°	37" (940)	90°	39" (991)	90°	41" (1041)	90°	43" (1092)	90°	45" (1143)	90°		
6" (152)	24-3/4 (629)	94°	26-7/8 (683)	94°	28-3/4 (730)	93°	30-7/8 (784)	93°	32-7/8 (835)	93°	34-7/8 (886)	92°	36-7/8 (937)	92°	38-7/8 (987)	92°	41" (1041)	92°	43" (1092)	92°	45" (1143)	92°		
8" (203)	24-1/2 (622)	98°	26-5/8 (676)	98°	28-1/2 (724)	97°	30-5/8 (779)	97°	32-1/2 (826)	96°	34-5/8 (879)	96°	36-5/8 (930)	96°	38-5/8 (981)	95°	40-5/8 (1032)	95°	42-5/8 (1083)	95°	44-5/8 (1133)	95°		
10" (254)	24-1/4 (616)	103°	26-1/4 (667)	102°	28-1/4 (718)	101°	30-3/8 (772)	100°	32-1/2 (826)	99°	34-1/2 (876)	99°	36-1/2 (927)	98°	38-1/2 (978)	98°	40-1/2 (1029)	98°	42-1/2 (1080)	97°	44-1/2 (1130)	97°		
12" (305)	23-1/2 (597)	107°	25-5/8 (651)	106°	27-1/2 (699)	105°	29-3/4 (756)	104°	31-3/4 (806)	103°	34" (864)	103°	36" (914)	102°	38" (965)	101°	40" (1016)	101°	42-1/8 (1070)	100°	44-1/8 (1121)	100°		
14" (356)	22-5/8 (575)	113°	24-7/8 (632)	111°	27" (686)	110°	29-1/8 (740)	108°	31-1/4 (794)	107°	33" (838)	106°	35-1/2 (902)	105°	37-5/8 (956)	104°	39-5/8 (1006)	104°	41-5/8 (1057)	103°	43-3/4 (1111)	103°		
16" (406)	21-1/2 (546)	118°	24" (610)	116°	26" (660)	114°	28-3/8 (721)	112°	30-1/2 (775)	110°	32-5/8 (829)	109°	34-7/8 (886)	108°	37" (940)	107°	39" (991)	106°	41-1/8 (1045)	105°	43-1/4 (1099)	105°		
18" (457)	20-3/8 (518)	124°	22-3/4 (578)	120°	25" (635)	118°	27-1/2 (699)	116°	29-3/4 (756)	115°	32" (813)	113°	34-1/8 (867)	111°	36-1/4 (921)	110°	38-3/4 (984)	109°	40-1/2 (1029)	109°	42-5/8 (1083)	108°		
20" (508)	18-7/8 (479)	129°	21-1/2 (546)	125°	24" (610)	123°	26-3/8 (670)	120°	28-5/8 (727)	118°	31" (787)	117°	33-1/4 (845)	115°	35-1/2 (902)	113°	37-5/8 (956)	112°	39-3/4 (1010)	111°	42" (1067)	110°		
22" (559)			19-3/4 (502)	131°	22-1/4 (565)	128°	25" (635)	125°	27-1/4 (693)	122°	29-3/4 (756)	120°	32-1/8 (816)	118°	34-1/2 (876)	117°	36-5/8 (930)	115°	39" (991)	114°	41-1/8 (1045)	113°		
24" (610)					20-1/2 (521)	133°	23-1/4 (591)	130°	25-7/8 (657)	127°	28-3/4 (730)	124°	31" (787)	122°	33-1/4 (845)	120°	35-1/2 (902)	118°	37-3/4 (959)	117°	40" (1016)	116°		
26" (660)									24-1/8 (613)	132°	26-7/8 (683)	129°	29-1/2 (749)	126°	32" (813)	124°	34-3/8 (873)	122°	36-3/4 (933)	120°	39" (991)	119°		
28" (711)													27-7/8 (708)	130°	30-1/2 (775)	127°	33" (838)	125°	35-1/2 (902)	123°	37-3/4 (959)	122°		
30" (762)																	31-3/8 (797)	129°	33-7/8 (860)	127°	36-1/2 (927)	125°		
32" (813)																			32-1/4 (819)	130°	34-7/8 (886)	128°		

Dimensions given in inches (mm).

993M Door Release Location Sheet



TEMPLATE NUMBER	SHEET	REV	DATE
DR100235	2 of 2	4	06/22