

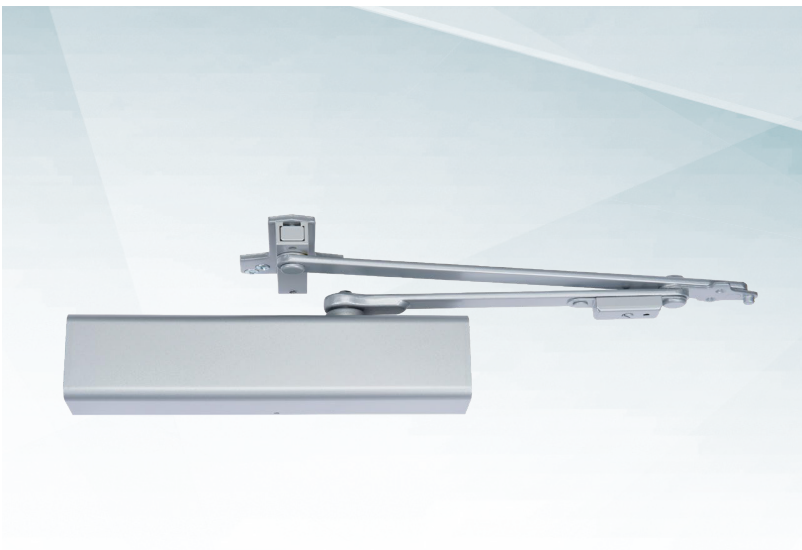
SELL SHEET



ASSA ABLOY

Experience a safer
and more open world

ARCHITECTURAL DOOR CLOSERS



The ASSA ABLOY Group is the global leader in access solutions. Every day, we help billions of people experience a more open world.



Architectural door closers offer the ideal combination of a clean appearance, reliability and durability. With many options available on the market today, it is important to understand the value and difference between the Norton Rixson 8000 and 210 Series door closers.

FEATURES AND BENEFITS

Feature	Benefit	8000 Series	210 Series
Listings and Approvals			
ANSI A156.4 Grade 1	Meets or exceeds ANSI standards	Yes	Yes
UL listed	Listed for use on fire-rated doors	Yes	Yes
Extended cycle testing beyond ANSI Grade 1	Confirms durability and longer service life. ANSI requires 1.5m cycles.	25 million	1.5 million
Product Design			
High performance casting alloys	Specially selected alloys provide increased strength, reduce wear and are dimensionally stable for a range of climatic conditions	304 alloy	Standard alloy
Steel pistons	Specially selected to increase strength, reduce wear and extend service life	Carbon steel	Mild steel
Pinion to arm attachment	Critical to maintain reliability under abusive conditions	Precision machined	Standard
Rack and pinion design	High strength design with increased rack and pinion engagement. Smooth load transfer increases reliability and service life.	13 teeth	12 teeth
Special applications support	Products customized for 'out of ordinary' applications	Yes	No
Limited warranty period	Quality Norton Rixson door closers	25 year	10 year
Product Configuration			
Multi-sized spring	Provide maximum flexibility to meet site conditions	Size 1 thru 6	Size 1 thru 6
Regular, hold open, heavy duty and special application arms	Full range to meet typical North American architectural functions and mounting conditions	Full range	Limited and series specific
Finish options (sprayed, powder coat, plated)	Range of choices to complement building décor	Yes	689, 690 only
Full, slim line and metal covers available	Full line offering for specific application needs	8501 - full cover standard; metal cover optional 8301 - slim cover standard	210 - full cover standard
Adapter plates, mounting plates and brackets	Maybe required to meet site specific conditions	Full range	Limited

CROSS REFERENCE GUIDE

Norton Rixson	LCN	Dormakaba	PDQ	Cal Royal	Stanley	Falcon	Hager
8501	1460-72FC	8600	—	—	—	—	—
8301	1460-72	8600	—	—	—	—	—
210	1450	—	5100	900/800	DC1610	SC80	5200

NOTE: No products are exactly alike. This cross reference represents our judgment of products that are most similar. Information has been obtained from trade sources. It is not represented nor guaranteed that any product exactly equals any other products.

Since 1880, Norton Rixson door controls have been an integral part of schools, hospitals and businesses around the globe. When you need products and people that perform at the highest level, rely on Norton Rixson – From Open to Close.

NORTON RIXSON | WWW.NORTONRIXSON.COM

3000 Highway 74 East | Monroe, NC 28112 | Tel: 1 877 974 2255

ASSA ABLOY OPENING SOLUTIONS DOOR SECURITY SOLUTIONS CANADA | WWW.ASSAABLOYDSS.CA

160 Four Valley Drive | Vaughan, Ontario, L4K 4T9 Canada | Tel: 800 461 3007