

F419 Side Jamb Pivot
Full Surface

3/4" Offset - Handed

Approved 2024-06-06






TEMPLATE NUMBER	REV	DATE
IS-F419	3	05/24

Handed

F419 Side Jamb Pivot Installation Instructions

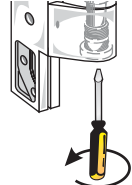
3/4" Offset

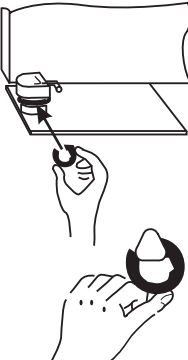
Door should already be hung with top pivot and bottom pivot (or floor closer)

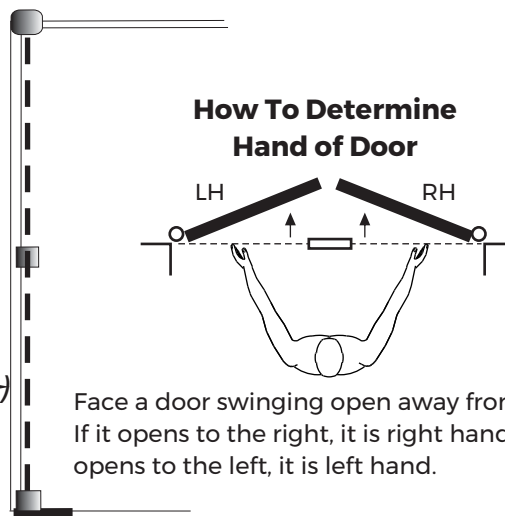
-  Mortise door & frame per template on reverse side.
-  Affix pivot to door & frame.
-  Align pivot point from top pivot to bottom arm. (See diagram)


-  Loosen arm screw*.

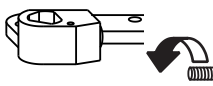
-  Remove hex cap.

-  Turn stud screw clockwise. Raise the door to the desired height.

-  Using shims furnished with bottom arm, fill gap between arm and base.

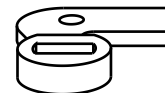


-  Turn stud screw counterclockwise until door rests on shims.

-  Tighten arm screw on spindle. Open and close door several times. Re-tighten arm screw.

-  Replace hex cap.

*** If bottom arm is for a Uni-Chek 67/68 or 117 pivot, make sure the arm is sitting all the way down on the base. Make NO adjustments to the M19.**



**F419 Side Jamb Pivot
Full Surface
3/4" Offset - Handed**

Approved 2024-06-06

**NORTON
RIXSON**
ASSA ABLOY

TEMPLATE NUMBER
IS-F419

REV DATE
3 05/24