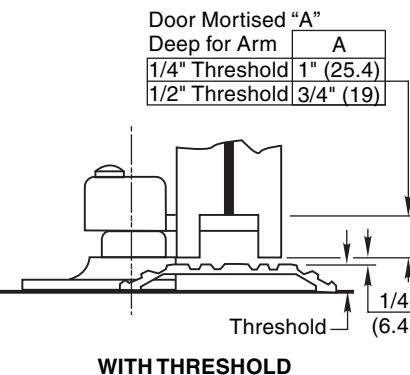
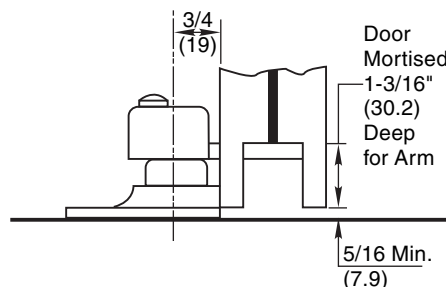
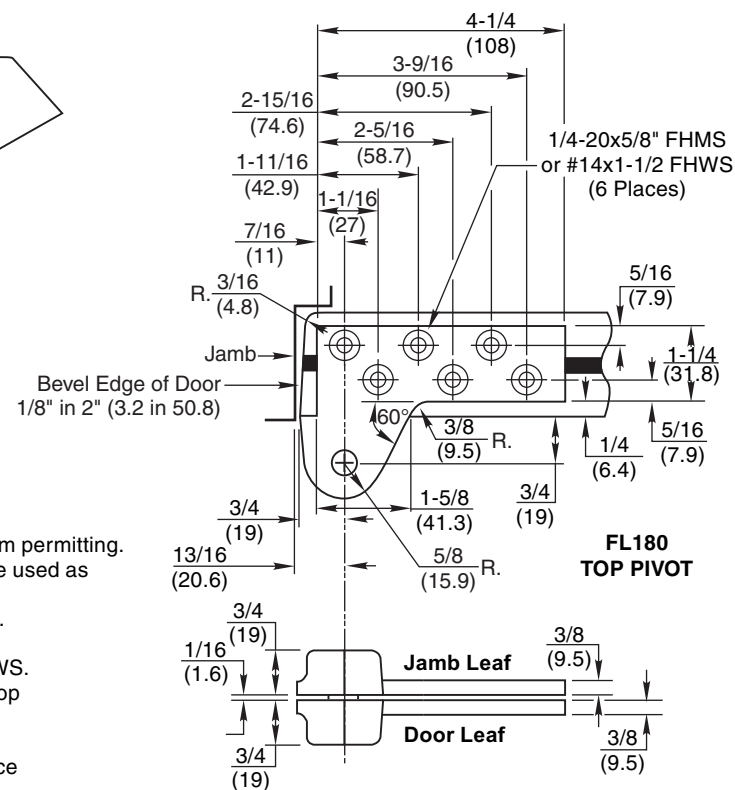


Notes:

1. Do not scale drawing.
2. Right hand shown.
3. Suitable reinforcing by others.
4. Leadlining by others.
5. Max. weight limitation is 650 lbs.
6. Max. degree of opening is 180° trim permitting.
7. FML 19 intermediate pivot must be used as required by codes.
8. All dimensions are in inches (mm).
9. Arm & Top Pivot drilled to receive 1/4-20 x 1" FHMS or #14 x 2" FHWS.
10. For Wood Doors: pre-drill Arm & Top Pivot holes to prevent splitting.
11. If vertical adjustment is required two 1/16" shims are provided. Place shims between arm and spindle shoulder collar.
12. This pivot set is to be used for 1-3/4 (44.5) thick doors with lead placed in center of door. Maximum lead thickness is 9/32 (7.1).



**FL147 Pivot Set
 3/4" Offset
 For 1-3/4" Lead Lined Fire Doors**



TEMPLATE NUMBER	REV	DATE
PS30340	3	01/22