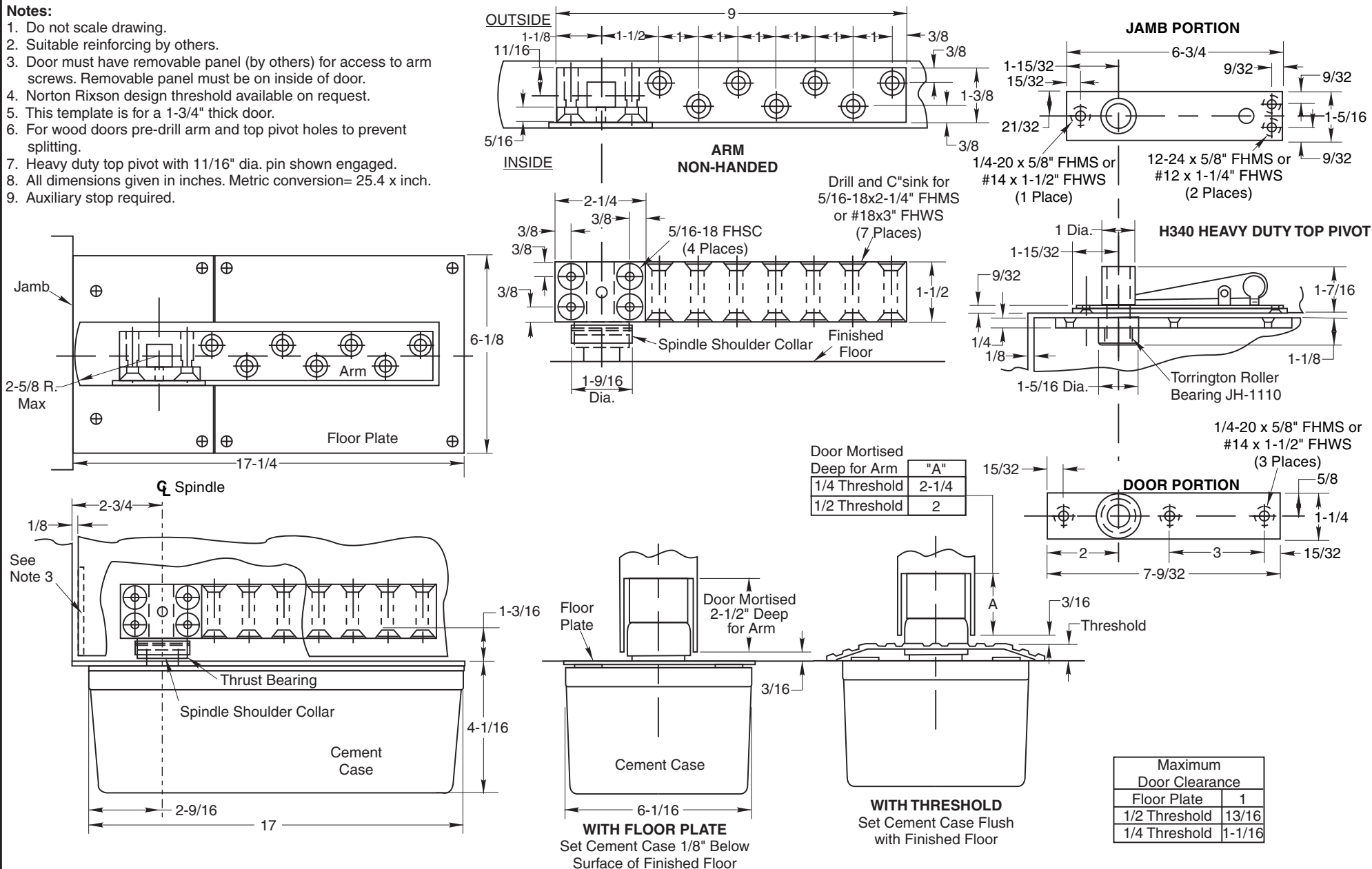


Notes:

1. Do not scale drawing.
2. Suitable reinforcing by others.
3. Door must have removable panel (by others) for access to arm screws. Removable panel must be on inside of door.
4. Norton Rixson design threshold available on request.
5. This template is for a 1-3/4" thick door.
6. For wood doors pre-drill arm and top pivot holes to prevent splitting.
7. Heavy duty top pivot with 11/16" dia. pin shown engaged.
8. All dimensions given in inches. Metric conversion= 25.4 x inch.
9. Auxiliary stop required.



**H40 Floor Closer x 587 Arm
Double Acting, Center Hung
For 1-3/4" Thick Door**



ASSA ABLOY

TEMPLATE NUMBER	REV	DATE
CH20312	3	12/21