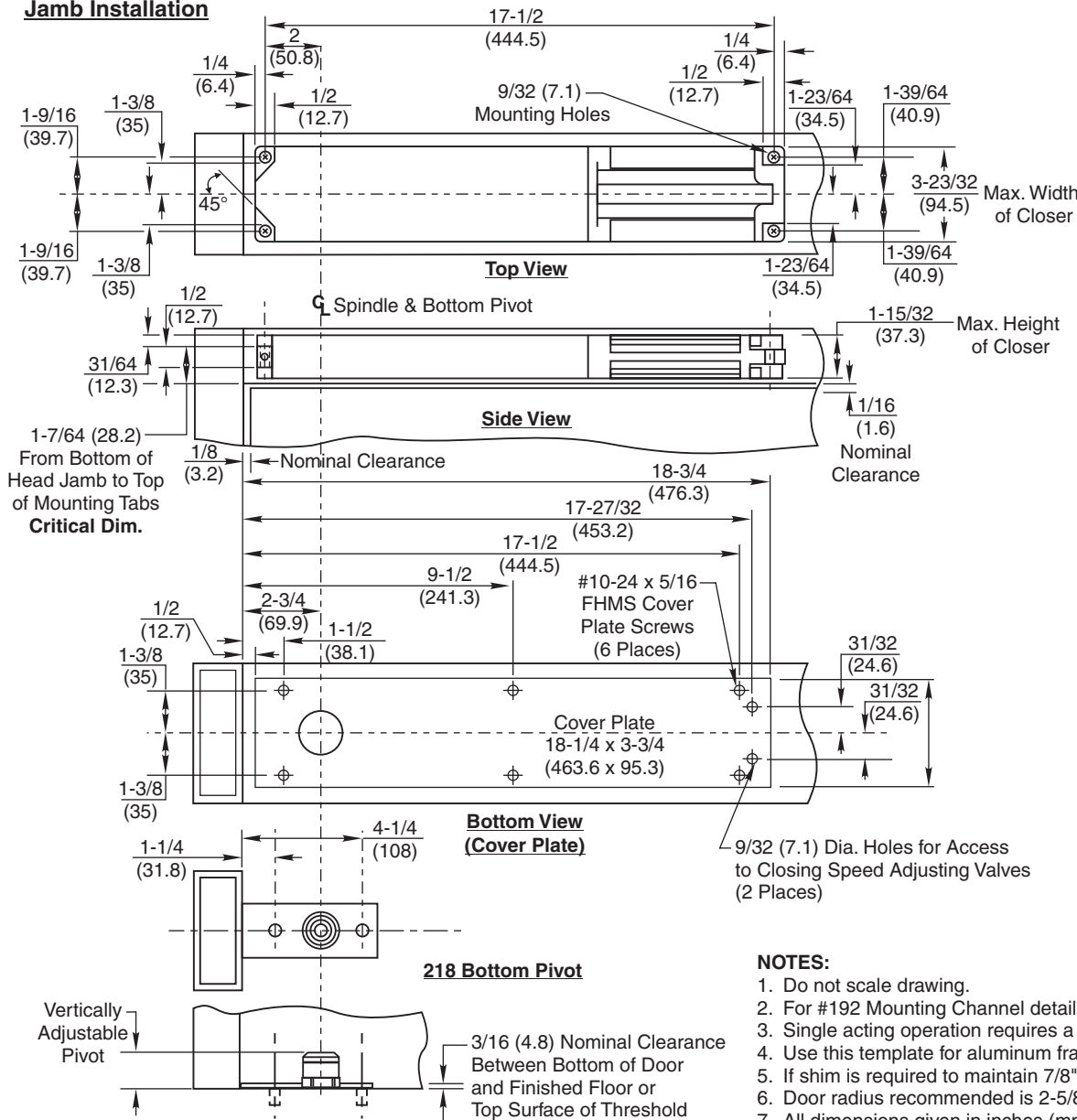
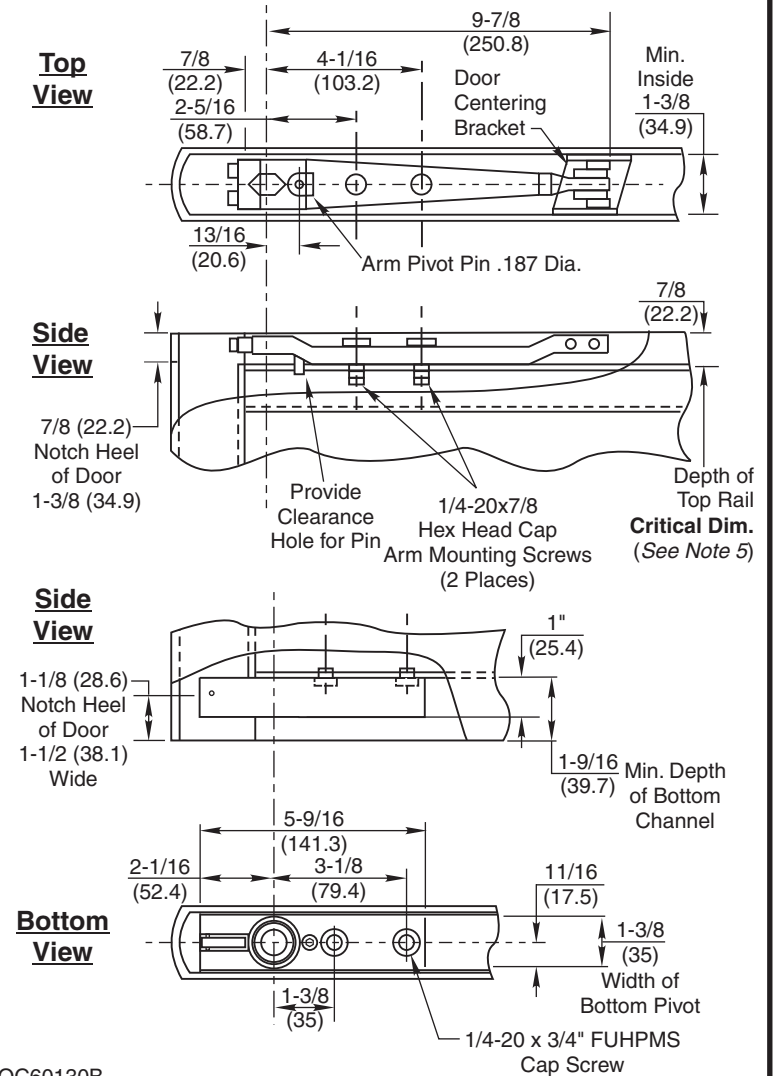


**Jamb Installation**



**Door Installation**



**NOTES:**

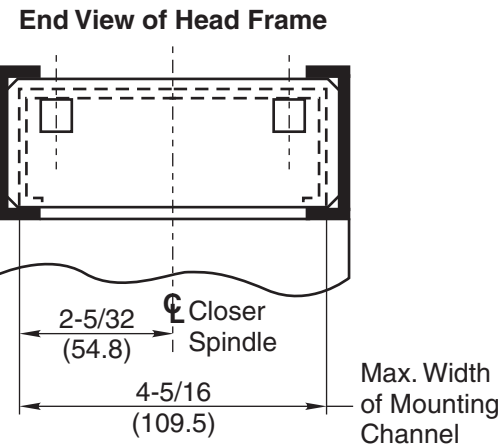
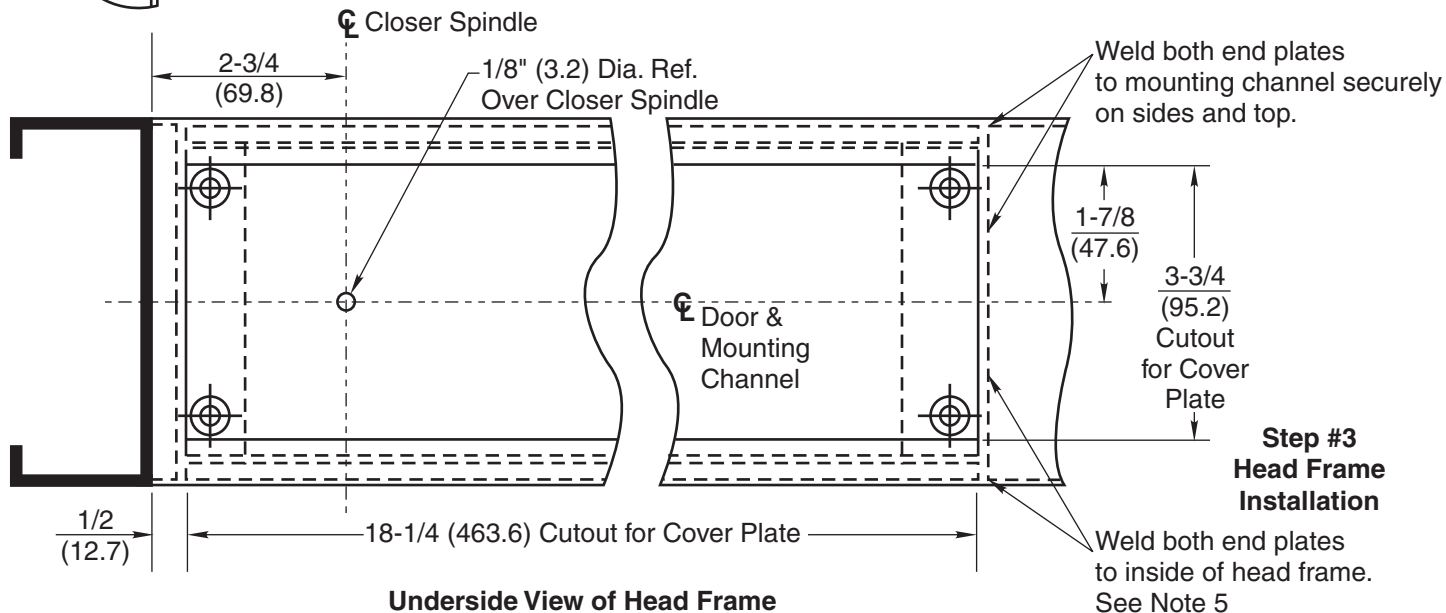
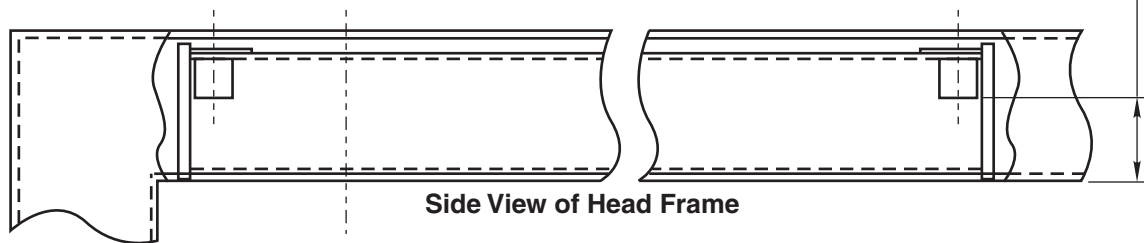
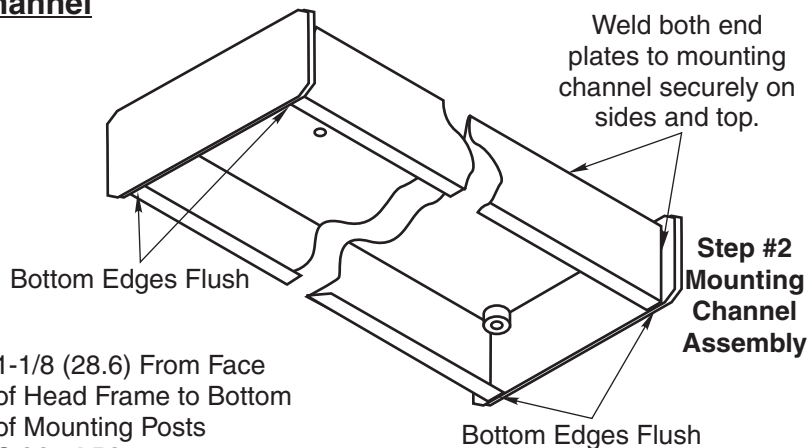
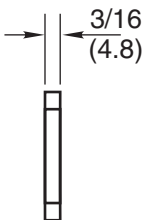
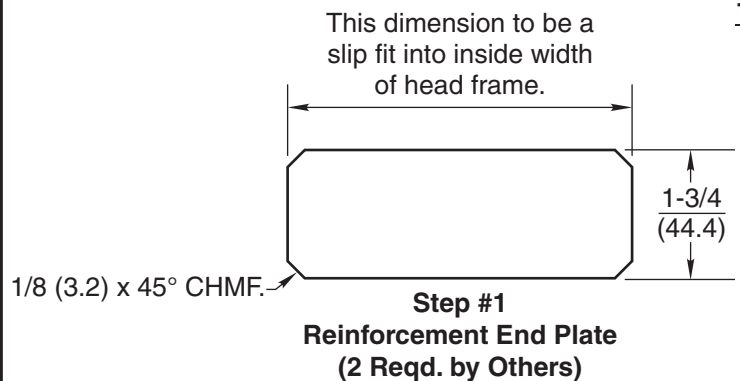
1. Do not scale drawing.
2. For #192 Mounting Channel detail see OC60130B.
3. Single acting operation requires a door stop on the underside of frame.
4. Use this template for aluminum frames and doors having 7/8" (22.2) depth top rail.
5. If shim is required to maintain 7/8" (22.2) rail depth, shim should be full length of arm.
6. Door radius recommended is 2-5/8" (66.7).
7. All dimensions given in inches (mm).

**M700 Single Acting & M800 Double Acting  
 Overhead Concealed Door Closer  
 Center Hung for Metal Doors and Frames**



TEMPLATE NUMBER	SHEET	REV	DATE
<b>OC60130</b>	<b>1 of 2</b>	<b>3</b>	<b>01/22</b>

### 192 Hollow Metal Mounting Channel Center Hung



- NOTES:**
1. Do not scale drawing.
  2. Right hand door shown.
  3. Minimum width head frame 2" x 5-1/2" (50.8 x 139.7) 16 ga. max.
  4. All dimensions given in inches (mm).
  5. Channel must be installed prior to jobsite installation of frame.

### M700 Single Acting & M800 Double Acting Overhead Concealed Door Closer Center Hung for Metal Doors and Frames



TEMPLATE NUMBER	SHEET	REV	DATE
OC60130	2 of 2	3	01/22