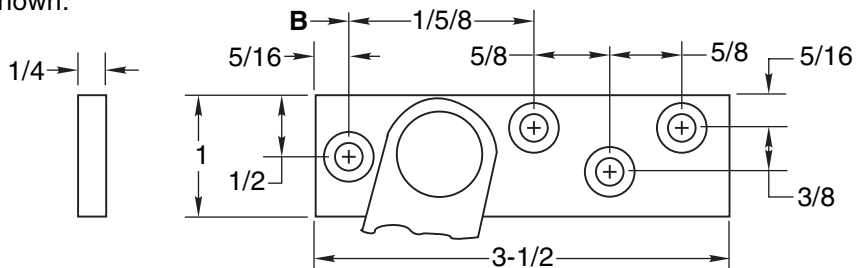


INSTALLATION INSTRUCTIONS

1. Determine the device number for the door opening. Then select proper dimensions from chart on OH80028B.

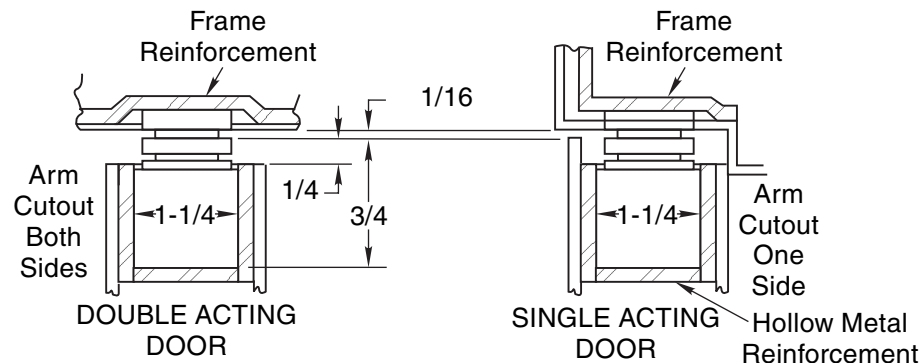
NOTE: A, B and C dimensions are measured from hinge center, not edge of door.

2. Locate "B" dimension on frame and mortise 1/4" deep for jamb bracket as shown.



No. 6 ADJ Series Concealed Door Stops

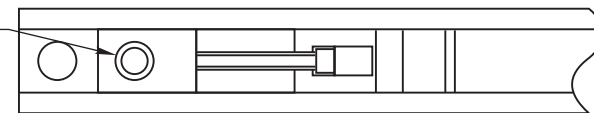
3. Locate "A" and "F" dimensions on centerline of door and mortise 3/4" deep for channel. 1/16" head clearance shown. Coordinate the arm and rail cutout dimensions if head clearance varies.



4. Locate "C" and "E" dimensions on top of door and mortise 1/4" deep as shown for arm cutout.

5. Install the holder with screws provided and locate the adjustable stop block by tightening its set screw. See view below.

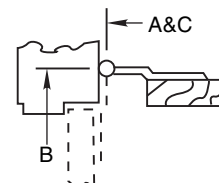
Slide lock block to desired position and tighten with set screw.



NOTES:

- All hollow metal frames are to be provided with 3/16" min. thickness x 12" min. length reinforcement plates.
- All hollow metal doors are to have minimum 3/16" reinforcement plates.
- A, B and C dimensions are measured from centerline of pivot, not edge of door.
- Left hand shown, right hand opposite.

CAUTION: Note location of swing clear hinge centerline to determine "A", "B" and "C" dimensions.



| Screw Details | |
|---|--|
| Jamb | Door |
| 1/4-20 x 5/8" FHMS or #14 x 1-1/2" FHWS | 5/16-18 x 3/4" FHMS or #18 x 2-1/4" FHWS |



| | | | |
|-----------------|--------|-----|-------|
| TEMPLATE NUMBER | SHEET | REV | DATE |
| OH80028A | 1 of 2 | 3 | 01/22 |

No. 6ADJ Series Concealed Door Stops

1. See OH80028A for installation instructions.
2. Select proper dimensions noted below.
3. All dimensions given in inches.

* Butt mounting only.
Reversible, non-handed

**When Using Center Hung Pivots, Check Pivot
Manufacturer's Compatibility Prior to Specifying**

| | Device Number | Degree | | | | | | |
|---|---------------|--------------|-------------|------------|--------|-------------|----------|-------------|
| | Stop | Door Opening | A | B | C | E | F | Max Opening |
| 1-3/4" - 2-1/4" Butts & 3/4" Offset Pivot | 6ADJ-136 | 24 - 28 | * 2-5/8 | * 4-1/8 | * 0 | * 16-5/8 | 16-1/16 | 110° |
| | 6ADJ-236 | 28-1/16 - 33 | * 4-3/16 | * 5 | * 1 | * 19-1/8 | 17-5/16 | 110° |
| | 6ADJ-336 | 33-1/16 - 38 | 7-7/16 | 6 | 4-1/4 | 20-5/8 | 18-13/16 | 110° |
| | 6ADJ-436 | 38-1/16 - 43 | 10 | 7-7/16 | 7-1/4 | 22-3/8 | 20-15/16 | 110° |
| | 6ADJ-536 | 43-1/16 - 48 | 13-5/16 | 8-1/2 | 8-1/4 | 26-1/4 | 22-7/16 | 110° |

NOTE: A, B, and C dimensions measured from centerline of pivot, not edge of door.

| | Device Number | Degree | | | | | | |
|-----------------------------------|---------------|--------------|---------|---------|-------|--------|----------|-------------|
| | Stop | Door Opening | A | B | C | E | F | Max Opening |
| 1-3/4" - 2-1/4" Center Hung | 6ADJ-136 | - | - | - | - | - | - | N/A |
| | 6ADJ-236 | 30 - 36 | 4-7/8 | 5-11/16 | 5-1/2 | 15-3/8 | 17-5/16 | 105° |
| | 6ADJ-336 | 36-1/16 - 41 | 7-15/16 | 6-1/2 | 6-1/4 | 19-1/8 | 18-13/16 | 110° |
| | 6ADJ-436 | 41-1/16 - 46 | 10-7/16 | 7-7/8 | 7-3/4 | 22-3/8 | 20-15/16 | 110° |
| | 6ADJ-536 | 46-1/16 - 50 | 13-3/4 | 8-15/16 | 8-3/4 | 26-1/8 | 22-7/16 | 110° |

No. 6 ADJ Series Concealed Door Stops



| | | | |
|-----------------|---------------|----------|--------------|
| TEMPLATE NUMBER | SHEET | REV | DATE |
| OH80028B | 2 of 2 | 3 | 01/22 |

Approved 2022-05-02