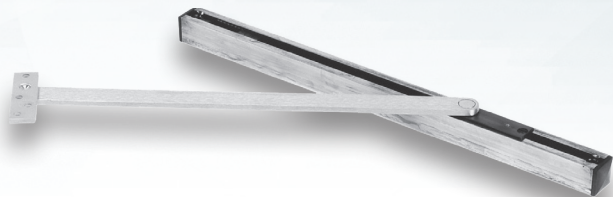
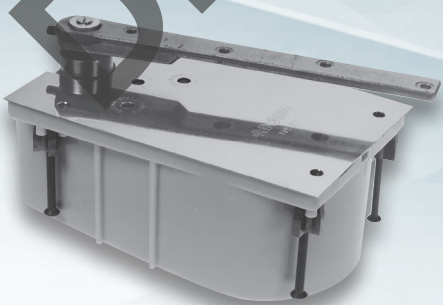


QUICK SHIP WEST





ASSA ABLOY

QUICK SHIP WEST

QUICK SHIP POLICY

Quick Ship Order Form

Please use the form on page 10 when placing orders for Norton Rixson products. Copies of this form can also be printed from our website (www.nortonrixson.com).

Quick Ship Numbers

Quick Ship Numbers must be included on the order form. Orders listing model numbers only will be processed as factory orders.

Quick Ship/Factory Orders

Quick Ship Product Orders and Factory Orders must be submitted on separate order forms. Any order received having both factory and quick ship products will be processed as a factory order and shipped from the factory at normal lead times.

Quotes

Quote number must be referenced on the purchase order. Orders without this information will be processed at standard buying programs.

Minimum Order

Minimum invoice is \$250 net product value.

Delivery

Lead time is 5 delivery days from receipt of order. (Consult the current Norton Rixson Price Book for a complete list of Terms & Conditions regarding delivery.) We reserve the right to limit quantities.

Freight

Customer orders with net product value in excess of \$7,000 will be shipped prepaid by Norton

Rixson's carrier of choice to a single destination point in the United States.

Changes/Cancellations

Due to the promptness of delivery, no changes or cancellations will be accepted. The only exception is when we are out of stock.

Prices

All shipments will be made at prices prevailing at time of shipment.

Terms

Invoices dated the 1st through the 15th will be due for 2% discount on the 10th of the following month. Invoices dated the 16th through the 31st will be due for 2% discount on the 25th of the following month. Net immediately thereafter.

Consult the current Norton Rixson Price Book for a complete list of Terms & Conditions, Tools & Rules and Warranty Information.

Customer Service

Tel: 877-974-2255

Email

orders.NortonRixson@assaabloy.com

Hours of Operation

8:00 am - 4:30 pm EST

Orders must be received before 2:30 pm EST for same day processing.

TABLE OF CONTENTS

7500	3
8500	4
1601, 410, 210	5
160, Screw Packs, 5700, Operator Accessories	6
27 Floor Closers	7
28 Floor Closers	7
Floor Closer Parts	7
Checkmate® Stops	8
Pivots	8
Electromagnetic Door Holder/Releases	8
Quick Ship Order Form	9

QUICK SHIP WEST

7500 SERIES – INSTITUTIONAL DOOR CLOSERS

Tri-Style® Packaging, Case Qty. 4

Model #	Description	Finish	Quick Ship #	Approx. Weight (Each) lbs.	Maximum Quantity
Non-Hold Open					
7500 x SN [^]	Multi-Size 1-6	689	007729	9	50
7500 x SN [^]	Multi-Size 1-6	690	007727	9	50
7500DA	Multi-Size 1-6, Delayed Action	689	007760	9	25
Hold Open					
7500H x SN [^]	Multi-Size 1-6	689	015706	11	20
CloserPlus®					
Non-Hold Open					
CLP7500 [^]	Multi-Size 1-6	689	008574	14	25
Parallel Rigid					
Non-Hold Open					
PR7500 [^]	Multi-Size 1-6	689	007742	14	25
Accessories					
7788	Parallel Arm Drop Plate	689	007000	4	10
7786	Regular Arm Drop Plate	689	006996	4	16

[^] Sex nuts included.

8500 SERIES – ARCHITECTURAL DOOR CLOSERS

Tri-Style® Packaging, Case Qty. 4

Model #	Description	Finish	Quick Ship #	Approx. Weight (Each) lbs.	Maximum Quantity
8501 - Full Cover					
Non-Hold Open					
8501 x SN^	Multi-Size 1-6	689	008979	8	50
8501 x SN^	Multi-Size 1-6	690	008977	8	50
8501DA x SN^	Multi-Size 1-6, Delayed Action	689	015708	8	25
Hold Open					
8501H x SN^	Multi-Size 1-6	690	015709	10	25
8501H x SN^	Multi-Size 1-6	689	008978	10	25
CloserPlus®					
Non-Hold Open					
CLP8501^	Multi-Size 1-6	689	009258	9	25
Accessories					
8146	Regular Arm Drop Plate	689	009096	4	10
8148	Parallel Arm Drop Plate	689	009099	4	10
8148	Parallel Arm Drop Plate	690	015707	4	25

^ Sex nuts included.

QUICK SHIP WEST

1601 SERIES – ALUMINUM STOREFRONT DOOR CLOSERS

Tri-Style® Packaging, Case
Qty. 6

Model #	Description	Finish	Quick Ship #	Approx. Weight (Each) lbs.	Maximum Quantity
Non-Hold Open					
1601 x SN^	Multi-Size 1-6	689	008147	7	50
1601 x SN^	Multi-Size 1-6	690	015700	7	25
Hold Open					
1601H x SN^	Multi-Size 1-6	689	015701	9	25

410 SERIES – CAST IRON DOOR CLOSERS

Tri-Style® Packaging, Case
Qty. 3

Model #	Description	Finish	Quick Ship #	Approx. Weight (Each) lbs.	Maximum Quantity
Non-Hold Open					
410 x TPN^	Multi-Size 1-6	689	015240	13	25
410 x TPN^	Multi-Size 1-6	690	015241	13	25

210 SERIES – ARCHITECTURAL DOOR CLOSERS

Tri-Style® Packaging, Case
Qty. 4

Model #	Description	Finish	Quick Ship #	Approx. Weight (Each) lbs.	Maximum Quantity
Non-Hold Open					
210 x TPN^	Multi-Size 1-6	689	015000	8.5	25
210 x TPN^	Multi-Size 1-6	690	015001	8.5	25

^ Sex nuts included.

160 SERIES – ALUMINUM STOREFRONT DOOR CLOSERS

Tri-Style® Packaging, Case Qty. 6

Model #	Description	Finish	Quick Ship #	Approx. Weight (Each) lbs.	Maximum Quantity
Non-Hold Open					
161BF x TPN [^]	Multi-Size 1-4	689	015044	7	25
161BF x TPN [^]	Multi-Size 1-4	690	015045	7	25

SCREW PACKS

Model #	Description	Finish	Quick Ship #	Approx. Weight (Each) lbs.	Maximum Quantity
SN-134	Sex Nuts Package , 1-3/4" Door	689	007210	0.2	25

5700 SERIES - LOW ENERGY OPERATOR

Model #	Description	Finish	Quick Ship #	Approx. Weight (Each) lbs.	Maximum Quantity
Operator					
5740	Push & pull arms included	689	015391	30	5
Accessories					
505	Door Switch, 6", Hardwired	N/A	015702	1.1	5
539	Radio Frequency Receiver	N/A	015703	0.6	30
548	Radio Frequency Receiver - 9V	N/A	015704	0.3	15
555	6" Square Surface Mount Box (for 505, 507)	N/A	015705	1.8	20

[^] Sex nuts included

QUICK SHIP WEST

27 FLOOR CLOSERS

Model #	Description	Hand	Finish	Quick Ship #	Approx. Weight (Each) lbs.	Maximum Quantity
27 Series Offset Hung, (includes closer, cement case, top pivot and cover plate)						
27105S	105° Selective Hold Open	RH	626	015426	28	2
27105S	105° Selective Hold Open	LH	626	015425	28	2
2790S	90° Selective Hold Open	RH	626	009777	28	2
2790S	90° Selective Hold Open	LH	626	009778	28	2

28 FLOOR CLOSERS

Model #	Description	Hand	Finish	Quick Ship #	Approx. Weight (Each) lbs.	Maximum Quantity
28 Series Center Hung, Single Acting (includes closer, cement case, top pivot and cover plate)						
PH2890S	Physically Handicapped, 90° Selective Hold Open	RH	626	015408	28	10
PH2890S	Physically Handicapped, 90° Selective Hold Open	LH	626	015409	28	10
28105S	90° Selective Hold Open	RH	626	015411	28	10
28105S	90° Selective Hold Open	LH	626	015410	28	10
28 Series Center Hung, Less All Parts (closer body only)						
2890S	90° Selective Hold Open LAP	RH	N/A	009940	20	10
2890S	90° Selective Hold Open LAP	LH	N/A	009941	20	10
28105S	105° Selective Hold Open LAP	RH	N/A	009955	20	10
28105S	105° Selective Hold Open LAP	LH	N/A	009956	20	10

FLOOR CLOSER PARTS

Model #	Description	Hand	Finish	Quick Ship #	Approx. Weight (Each) lbs.	Maximum Quantity
27 & 28 Parts and Accessories						
282026	28 Arm Package	N/A	629	015402	3	10
282554	28 554 Arm Package	N/A	N/A	015406	3	10
253000	Cement Case (27 & 28 Closers)	N/A	N/A	009787	1	20
284720R626	28 Floor Plate Pkg. (SHO)	RH	626	009863	1	20
284720L626	28 Floor Plate Pkg. (SHO)	LH	626	009864	1	20

CHECKMATE® STOPS

Model #	Description	Finish	Quick Ship #	Approx. Weight (Each) lbs.	Maximum Quantity
Checkmate® Stops and Holders					
1-236	HD Concealed Stop	630	015407	5	5

PIVOTS

Model #	Description	Hand	Finish	Quick Ship #	Approx. Weight (Each) lbs.	Maximum Quantity
3/4" Offset Pivot Sets (Includes Top Pivot)						
117	Regular	RH	626	009800	3	5
117	Regular	LH	626	009801	3	12
147	Regular	RH	626	009813	2	12
147	Regular	LH	626	009814	2	5
L147	Heavy-Duty 1-3/4" Door	RH	626	009823	5	8
L147	Heavy-Duty 1-3/4" Door	LH	626	009824	5	5
195	Regular	RH	626	009826	3	5
195	Regular	LH	626	009827	3	5
Center Hung Pivot Sets (Includes Top Pivot)						
127-3/4	Medium Duty	N/A	626	009799	2	12
128-3/4	Medium Duty	N/A	626	009829	2	5
128-3/4	Medium Duty	N/A	625	009796	2	12
370	Heavy Duty	N/A	626	009831	3	35
370	Heavy Duty	N/A	613	015403	3	5
Top Pivots						
340	Center Hung	N/A	626	009945	2	5
H340	Heavy-Duty Center Hung	N/A	626	015400	3	20
H345	Heavy-Duty Center Hung	N/A	626	015401	3	2
345	Center Hung	N/A	626	015404	2	2
180	Offset	N/A	626	009946	1	8
H180	Heavy-Duty, Offset	N/A	626	015405	2	5
Intermediate Pivots						
M19	Regular	RH	626	009839	2	5
M19	Regular	LH	626	009840	2	6
ML19	Heavy-Duty 1-3/4" Door	RH	626	009855	2	5
ML19	Heavy-Duty 1-3/4" Door	LH	626	009856	2	5

QUICK SHIP WEST

ELECTROMAGNETIC DOOR HOLDER/RELEASES

Model #	Description	Finish	Quick Ship #	Approx. Weight (Each) lbs.	Maximum Quantity
Triple Voltage Door Holders (12vDC, 24vAC/DC and 120vAC)					
994M	Adjustable Short Armature Concealed Wiring	689	009997	2	5
996M	Surface Wired	689	009932	2	5
997M	Short Armature Concealed Wiring	689	009933	2	5
998M	Long Armature Concealed Wiring	689	009934	2	5
998M	Long Armature Concealed Wiring	690	009935	2	15
Parts and Accessories					
996369	996 Magnet/Bracket Assembly	N/A	009937	1	5
998369	997/998 Magnet/Bracket Assembly	N/A	009938	1	5
997510-A	Short Armature Housing Assembly	689	009904	0.2	5
998512-A	Long Armature Housing Assembly	689	009905	0.4	5
996XK	Wall Portion Extension (1-1/2")	689	009906	1	5
Armature Extensions					
900	Base Unit	689	009733	0.1	5
900-50	*1/2" Spacer	689	009736	0.1	5
900-75	*3/4" Spacer	689	009735	0.1	5
900-100	*1" Spacer	689	009734	0.1	5
900Z	*Armature Extension 90° Bend (1-1/2")	689	009732	0.1	5

*Extension spacers and bend spacer must be used with 900 base unit armature extension

QUICK SHIP WEST

7500 Series

8500 Series

1601, 410, 210

160, Screw Packs,
5700, Operator
Accessories

27 Floor Closers

28 Floor Closers

Floor Closer Parts

Checkmate®
Stops

Pivots

Electromagnetic
Door Holder/
Releases

Quick Ship
Order Form

The ASSA ABLOY Group is the global leader in access solutions.
Every day, we help billions of people experience a more open world.

ASSA ABLOY Opening Solutions leads the development within door openings and products for access solutions in homes, businesses and institutions. Our offering includes doors, frames, door and window hardware, mechanical and smart locks, access control and service.



ASSA ABLOY

Since 1880, Norton Rixson door controls have been an integral part of schools, hospitals and businesses around the globe. When you need products and people that perform at the highest level, rely on Norton Rixson – From Open to Close.

NORTON RIXSON | WWW.NORTONRIXSON.COM

3000 Highway 74 East | Monroe, NC 28112 | Tel: 1 877 974 2255

ASSA ABLOY OPENING SOLUTIONS DOOR SECURITY SOLUTIONS CANADA | WWW.ASSAABLOYDSS.CA

160 Four Valley Drive | Vaughan, Ontario, L4K 4T9 Canada | Tel: 800 461 3007

Copyright © 2020-2022, ASSA ABLOY Accessories and Door Controls Group, Inc. All rights reserved. Reproduction in whole or in part without the express written permission of ASSA ABLOY Accessories and Door Controls Group, Inc. is prohibited.

43517-10/22