

OP-3000 & OP-3100 Offset Pivot Set

INSTALLATION INSTRUCTIONS**OP-3000:****FLUSH DOOR**

OP-3001 LEFT HAND
OP-3002 RIGHT HAND

OP-3100:**1/8" RECESSED DOOR**

OP-3101 LEFT HAND
OP-3102 RIGHT HAND

For entrances with threshold only.

1. Drill or drill and countersink holes in door, frame and threshold as shown.

2. Rout out header and bottom of jamb and notch threshold as shown.

3. Install frame portion using (3) #12-24 X 3/4" flat head machine screws.

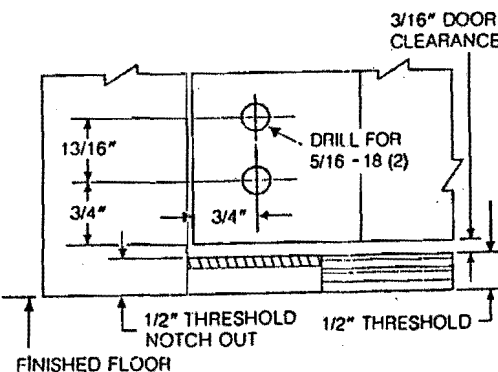
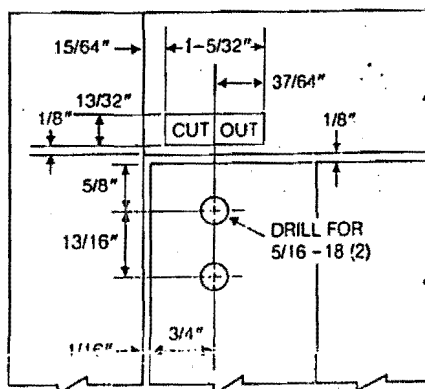
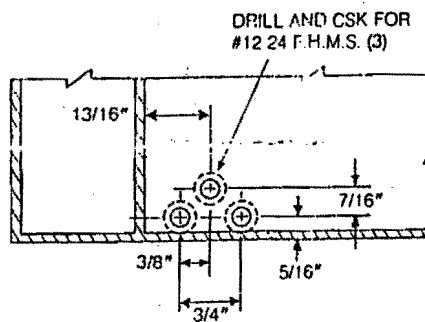
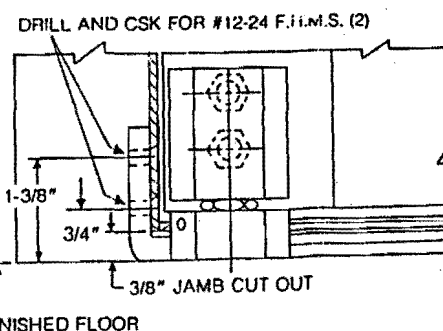
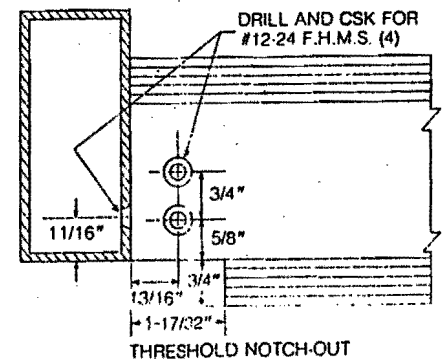
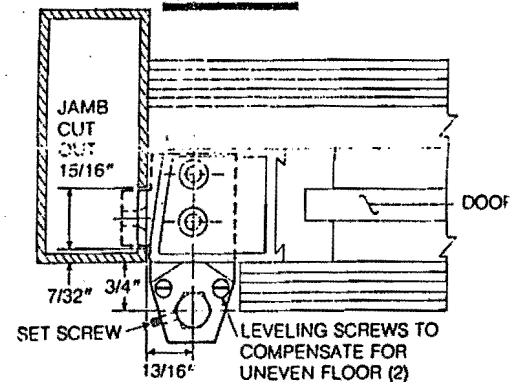
4. Install top and bottom door portions securing each with (2) 5/16 - 18 X 1/2" hex head cap screws with washers.

5. Install floor portion using (2) #12-24 x 3/4" flat head machine screws. Secure threshold to floor portion using (2) #12-24 x 3/8" flat head machine screws, and then install threshold in normal manner.

6. To install door, place bottom door portion on stud of floor portion at a slight angle, depress pin in the top door portion and tilt door into opening until pin engages in frame portion.

7. Adjust door for proper clearance by turning adjustable pivot stud (loosen set screw before adjusting and retighten after).

NOTE: Right hand door shown, left hand opposite.

HEADER & DOOR PREPARATION
OP-3000 & OP-3100**JAMB PREPARATION**
OP-3000 & OP-3100**JAMB & THRESHOLD PREPARATION**
OP-3000: FLUSH DOOR**JAMB & THRESHOLD PREPARATION**
OP-3100: 1/8" RECESSED DOOR