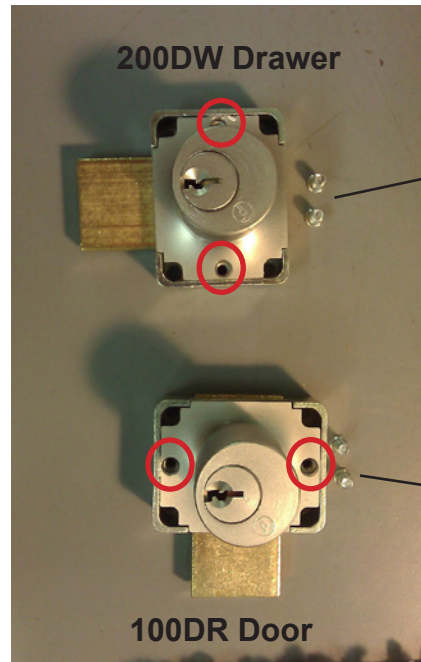


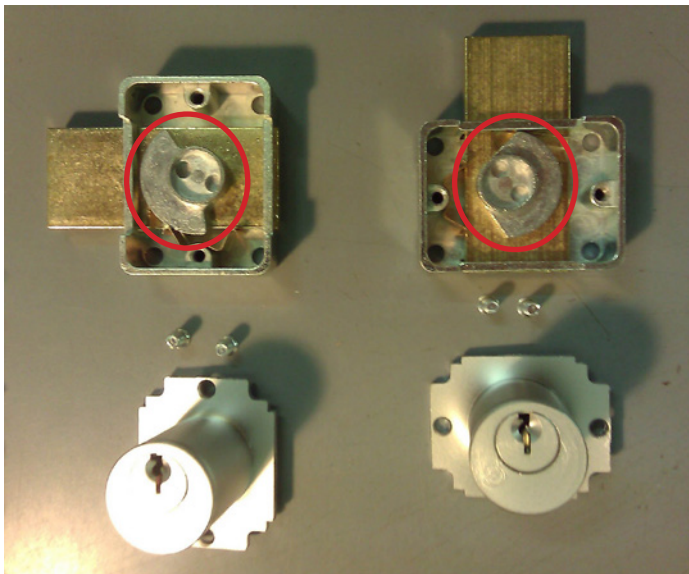
100 / 500
200 / 600

KEY-RETAINING / NON-KEY-RETAINING CONVERSION INSTRUCTIONS

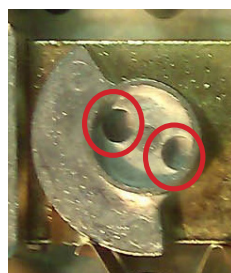
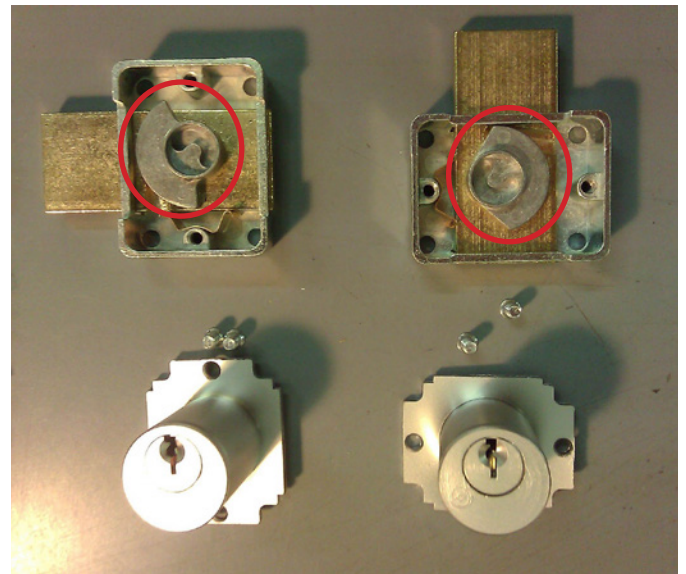
1. Remove both screws from front of lock face
2. Lift off front of lock face
3. Remove key-retaining cam disk (or regular cam disk)
4. Replace with standard cam disk (or key-retaining cam disk)
5. Replace front of lock face
6. Secure with both screws



Remove key-retaining cam disks



Replace with standard cam disks



**Key-retaining
cam disks
have two
holes**



**Standard cam
disks have a
curved slot**



**OLYMPUS
LOCK**
INC

206-362-3290 | 800-525-0954 | www.olympuslock.com