

720B-DM

SFIC: Solid Brass Cam Lock
Direct Drive for Small Format Interchangeable Core



BEST compatible interchangeable core cylinders

SPECIFICATIONS

Retrofits: Best 1E7D4
Cams: Will work with Best original cams
Cylinder diameter: 1-1/8"
Across flats: 7/8"
Max. material thickness: 1-1/8"
Min. material thickness: 0.08"
Functions: Direct drive screw on cam mechanism
Body: Machined solid brass
Finish: US26D
Packaged: Packed 10 per box

KEYING INFORMATION

Cores: Not included.
Accepts: Best, Arrow, Falcon, KSP, Schlage SFIC or equivalent small format interchangeable cores
Compatible electronic cylinders: Medeco Nexgen XT or VIDEX CyberLock SFIC cylinders

INCLUDES

725-PA plastic thumbturn
720-3-D1 short direct drive cam
TR201 spacer collar, 1/8"
TR202 spacer collar, 1/4"
725-1 spacer for 6 pin cores



Works with Best original cams.

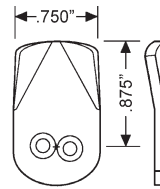
720B-DM

Function: Cam lock, direct drive screw on cam mechanism

Material: Solid brass machined body

Cam installation: See our website for cam assembly instructions.

INCLUDED ACCESSORIES



720-3-D1
short cam



TR201
1/8"



TR202
1/4"



WARNING: This product can expose you to chemicals including chromium, which is known to the State of California to cause cancer and birth defects or other reproductive harm. For more information go to www.P65Warnings.ca.gov.



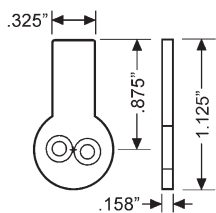
**OLYMPUS
LOCK** INC

720B-DM

SFIC: Solid Brass Cam Lock
Direct Drive for Small Format
Interchangeable Core

OPTIONAL ACCESSORIES - See our website for a complete list of optional components.

Optional Cams



720-3-SC1
switch cam

CL-MP-118 Double-D Metal Punch

Hole size: Punches a DOUBLE "D" hole size approximately 7/8" wide by 1-1/8" high.



TR200 Series Trim Collars



TR203
3/8"

TR204
5/32"

206/207 Series SFIC Cylinders

Best compatible 6 and 7 pin small format interchangeable core cylinders



For BEST style interchangeable core cylinders



A	B	C	D	E	F	G	H	
J	K	L	M	Q	1C	1D	KMT300	

DIMENSIONS

MOUNTING CUTOUT

