

721DR | 721DW

SFIC: Deadbolt Door & Drawer Cabinet Locks



For BEST style interchangeable core cylinders



**ANSI/BHMA Grade 1
E07121 | E07041**
**Woodwork Institute (WI)
acknowledged product**

SPECIFICATIONS

- Retrofits:** Best 3L
- Reversible:** Field reversible between door and drawer functions
- Long bolt:** Extends bolt 3/4" on both ends. Specify **-LB** option when ordering.
- Testing:** Passed ANSI/BHMA A156.11 Grade 1 performance requirements.
- US Patent Nos:** 4,899,563; 4,920,774
- Body:** Zinc die cast
- Barrel diameter:** 1-1/8"
- Cylinder length:** 1-1/4" or 1-3/8"
- Finish:** US26D (satin chrome), US4 (satin brass) or US10B (oil rubbed bronze), US19 (flat black). 1-3/8" barrel length locks available in US26D finish only.

KEYING INFORMATION

- Cores:** Not included
- Accepts:** Best, Arrow, Falcon, KSP, Schlage SFIC or equivalent small format interchangeable cores
- Compatible electronic cylinders:** Medeco Nexgen XT or VIDEX CyberLock SFIC cylinders.

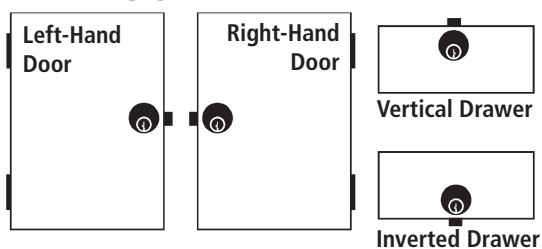
INCLUDED ACCESSORIES

- For 1-1/4" barrel length locks:**
 - 725-1 spacer to fit 6 or 7 pin cores
 - 725-PA plastic thumbturn
 - 10-350 (qty 3) plastic spacers
 - 10-054 1/4" plastic bar strike
 - 10-057 .65" plastic bar strike
- For 1-3/8" barrel length locks:**
 - 725-1 spacer to fit 6 or 7 pin cores
 - 725-PA plastic thumbturn
 - 10-054 1/4" plastic bar strike

OPTIONAL ACCESSORIES

- Extended (long) bolt:** 721-1-LB (for use with 721DR or 721DW)

HANDING CHART



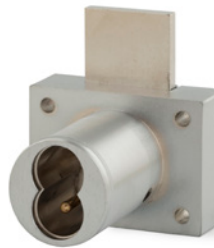
ANSI/BHMA No. E07121

721DR

Function: Cabinet door lock
Standard function: Key removable in locked or unlocked position. Standard locks are non-handed.

Key-retaining function: Key removable in locked position only. Specify **-KR** for key-retaining.

Long bolt



ANSI/BHMA No. E07041

721DW

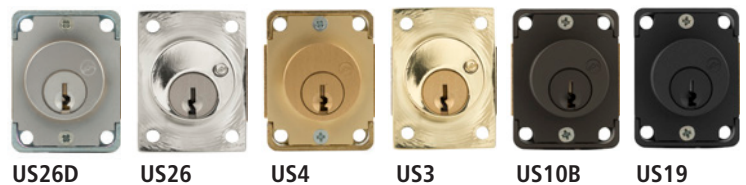
Function: Drawer lock
Standard function: Key removable in locked or unlocked position. Standard locks are non-handed.

Key-retaining function: Key removable in locked position only. Specify **-KR** for key-retaining.

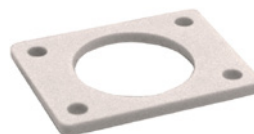
Long bolt



AVAILABLE FINISHES



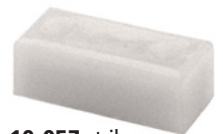
INCLUDED ACCESSORIES



10-350 internal spacers
For a flush fit on varying material thicknesses



10-054 bar strike
1/4" plastic bar strike



10-057 strike
.65" plastic bar strike

WARNING: This product can expose you to chemicals including chromium, which is known to the State of California to cause cancer and birth defects or other reproductive harm. For more information go to www.P65Warnings.ca.gov.



**OLYMPUS
LOCK** INC

721DR | 721DW

ANSI/BHMA Grade 1
E07121 | E07041

SFIC: Deadbolt Door & Drawer Cabinet Locks

OPTIONAL ACCESSORIES - See our website for a complete list of optional components.

Internal Plastic Spacers

- 10-350 1/8" thick plastic spacers
- 10-348 1/4" thick plastic spacers
- 10-349 1/2" thick plastic spacers

Strikes

- Plastic bar strikes: 10-054, 10-055, 10-057, 10-058. Metal strikes: 10-056 12-1, 12-2, 12-3, 12-4

Trim Ring

- TR78 trim ring

206/207 Series

- 206 Series 6-pin SFIC cylinder
- 207 Series 7-pin SFIC cylinder



BEST compatible interchangeable core cylinders



AVAILABLE KEYWAYS

A	B	C	D	E	F	G	H	
J	K	L	M	Q	1C	1D	KMT300	

Through-Bolt Mounting Plate

External metal 1/8" or 1/4" through-bolt plate allows for secure and attractive flush mounting of the cabinet lock face. Available in US3 or US26D finish.

- ETS1-125 through-bolt plate, 1/8" thick
- ETS1-250 through-bolt plate, 1/4" thick

Through-Bolt Mounting Plate Template

Allows for proper mounting hole placement of through-bolt plate. Can be used as a 1/8" shim spacer. Available in US3 and US26D finish.

- ETST2 through-bolt plate template

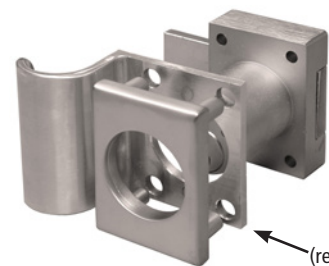
ETS1
Through-bolt plate



ETST1
Through-bolt plate template



ETS1-PL
Through-bolt pull

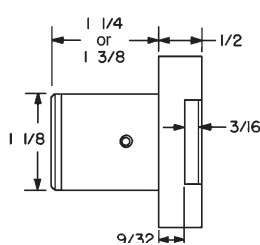


U.S. Patent No. D490,686

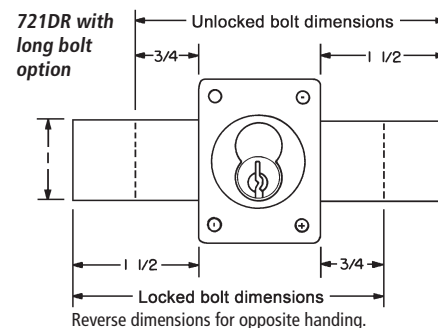
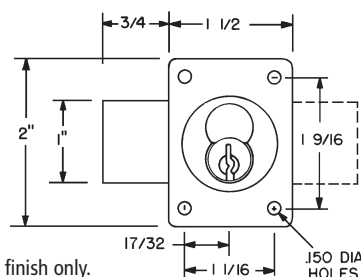
ETS1-PL
(requires use of ETS1)

DIMENSIONS | TYPICAL INSTALLATION

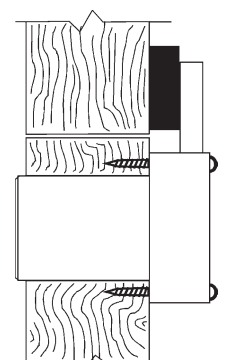
721DR Cabinet Door Lock



1-3/8" cylinder length available in US26D finish only.

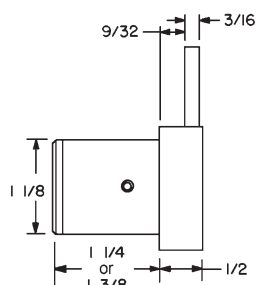


Typical Installation



721DR - top view
721DW - side view

721DW Drawer Lock



1-3/8" cylinder length available in US26D finish only.

