

777/888 Key Retaining Assembly

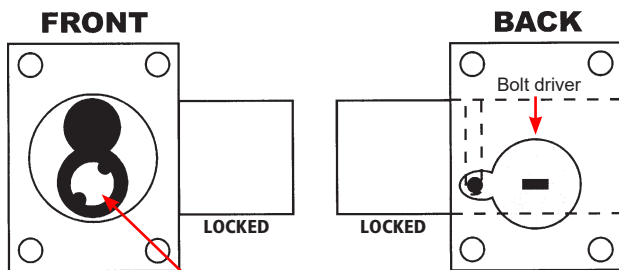
For Schlage Standard/Classic Full-Size Interchangeable Core Cylinders



777 CABINET DOOR FUNCTION

KEY-RETAINING — Standard/Classic

**Standard FSIC Cylinder
Left-Hand (LH)
Key Retaining**



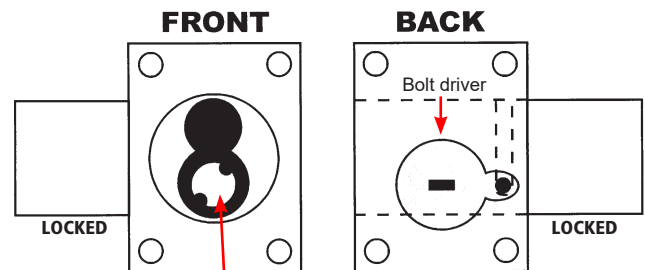
Key retaining conversion requires purchase of alternate *tail piece* and *bolt driver*.



#777-2-90 Tail piece
#777-2-OLD Bolt driver

IMPORTANT!! Cycle lock to the **LOCKED POSITION** before inserting the core.

**Standard FSIC Cylinder
Right-Hand (RH)
Key Retaining**



Key retaining conversion requires purchase of alternate *tail piece* and *bolt driver*.



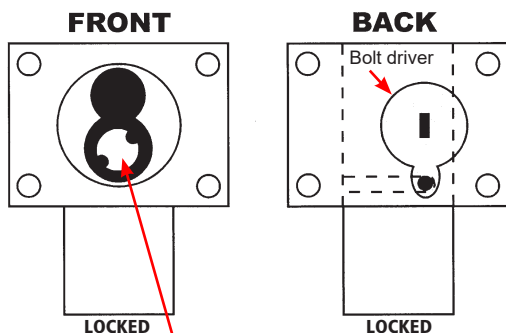
#777-2-90 Tail piece
#777-2-OLD Bolt driver

IMPORTANT!! Cycle lock to the **LOCKED POSITION** before inserting the core.

888 CABINET DRAWER FUNCTION

KEY-RETAINING — Standard/Classic

**Standard FSIC Cylinder
Inverted-Hand (IH)
Key Retaining**



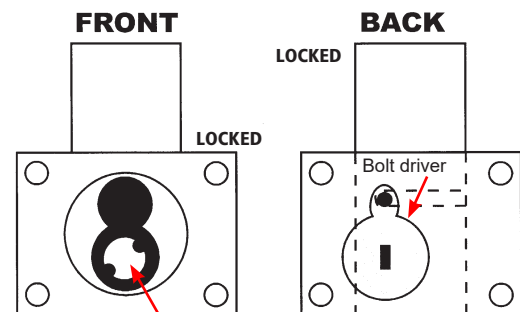
Key retaining conversion requires purchase of alternate *tail piece* and *bolt driver*.



#888-4-90 Tail piece
#888-2-OLD Bolt driver

IMPORTANT!! Cycle lock to the **LOCKED POSITION** before inserting the core.

**Standard FSIC Cylinder
Vertical-Hand (VH)
Key Retaining**



Key retaining conversion requires purchase of alternate *tail piece* and *bolt driver*.



#888-4-90 Tail piece
#888-2-OLD Bolt driver

IMPORTANT!! Cycle lock to the **LOCKED POSITION** before inserting the core.

777/888 Key Retaining Assembly

For Schlage Primus/Everest Full-Size Interchangeable Core Cylinders

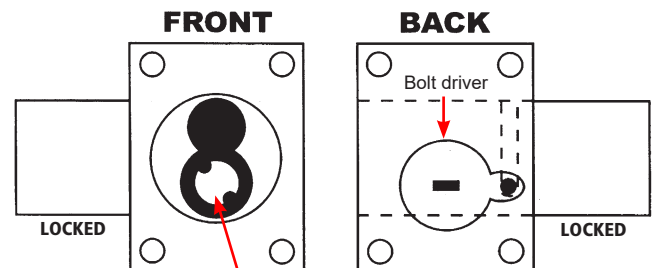
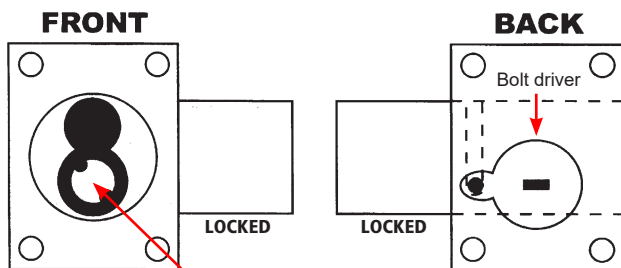


777 CABINET DOOR FUNCTION

KEY-RETAINING — Primus/Everest

**Primus/Everest FSIC Cylinder
Left-Hand (LH)
Key Retaining**

**Primus/Everest FSIC Cylinder
Right-Hand (RH)
Key Retaining**



Key retaining conversion requires purchase of alternate *tail piece* and *bolt driver*.

 **#888-4-90** Tail piece
#777-2-OLD Bolt driver

Key retaining conversion requires purchase of alternate *tail piece* and *bolt driver*.

 **#888-4-90** Tail piece
#777-2-OLD Bolt driver

IMPORTANT!! Cycle lock to the **LOCKED POSITION** before inserting the core.

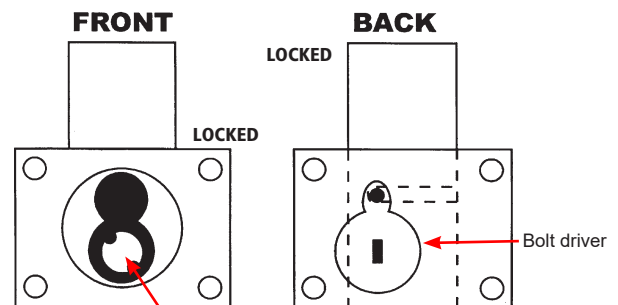
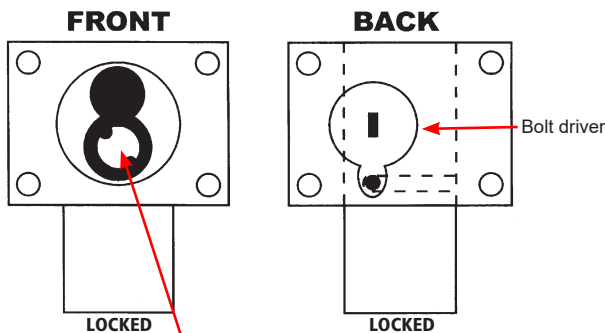
IMPORTANT!! Cycle lock to the **LOCKED POSITION** before inserting the core.

888 CABINET DRAWER FUNCTION

KEY-RETAINING — Primus/Everest

**Primus/Everest FSIC Cylinder
Inverted-Hand (IH)
Key Retaining**


**Primus/Everest FSIC Cylinder
Vertical-Hand (VH)
Key Retaining**



Key retaining conversion requires purchase of alternate *tail piece* and *bolt driver*.

 **#777-2-90** Tail piece
#888-2-OLD Bolt driver

Key retaining conversion requires purchase of alternate *tail piece* and *bolt driver*.

 **#777-2-90** Tail piece
#888-2-OLD Bolt driver

IMPORTANT!! Cycle lock to the **LOCKED POSITION** before inserting the core.

IMPORTANT!! Cycle lock to the **LOCKED POSITION** before inserting the core.