

# 850S

## S Series: Schlage C Keyway Deadlatching Drawer Lock



### SPECIFICATIONS

**Rekeyable:** Easily rekeyable via set-screw cylinder removal mechanism

**U.S. Patent Nos:** 4,899,563; 4,920,774; 5,657,652

**Body:** Zinc die cast

**Cylinder length:** 1-1/8" or 1-3/8"

**Barrel diameter:** 1-1/8"

**Finish:** 26D or US3

**Packaged:** Packed 10 per box

### INCLUDED ACCESSORIES

**For 1-1/8" barrel length locks:**

10-350 plastic spacers (qty 2)

850-210 matching strike

**For 1-3/8" barrel length locks:**

850-211 matching strike

### 850S KEYING INFORMATION

**Keying:** Can be keyed together with other Schlage C Keyway locks

**Keyway:** Schlage C keyway

**Keys:** Includes 2 keys per lock

**Cylinder:** Solid brass, pin tumbler

**Stock keying:** KD/KA - 5 pin standard

**Stock KA#:** 101, 102

**Masterkeying:** 5 pin standard, 6-pin available

**Grand masterkeying:** Available

**Keyblank 5-pin:** KBSC-5

**Keyblank 6-pin:** KBSC-6

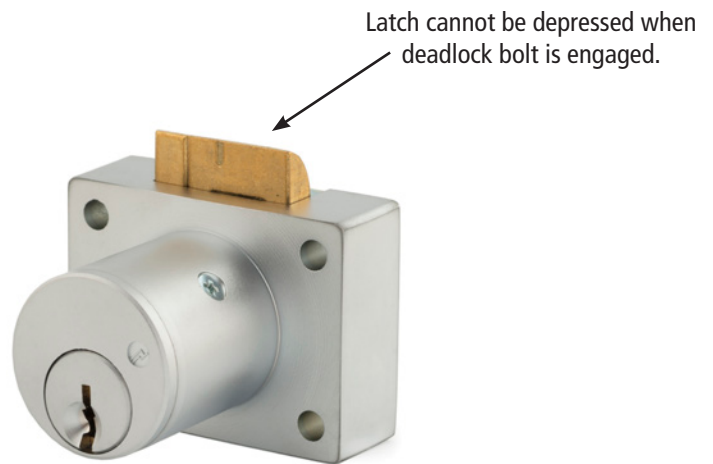
### OPTIONAL ACCESSORIES

**Spacers:** 10-350 spacer (1/8" thick), 10-348 spacer (1/4" thick), 10-349 spacer (1/2" thick)

**Trim ring:** TR78 trim ring

**Cylinder:** 78-201 Series (page 54)

**Through-bolt hardware:** ETS1 trim plate, ETS1-PL trim pull and ETST1 template



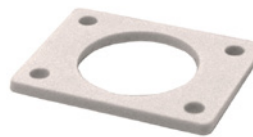
### AVAILABLE FINISHES



US26D

US3

### INCLUDED ACCESSORIES



**10-350 internal spacers**  
For a flush fit on varying material thicknesses



**850-210 / 850-211 lip strike**



**WARNING:** This product can expose you to chemicals including chromium, which is known to the State of California to cause cancer and birth defects or other reproductive harm. For more information go to [www.P65Warnings.ca.gov](http://www.P65Warnings.ca.gov).



**OLYMPUS  
LOCK**  
INC

# 850S

## S Series: Schlage C Keyway Deadlatching Drawer Lock

**OPTIONAL ACCESSORIES** - See our website for a complete list of optional components.

### Internal Plastic Spacers

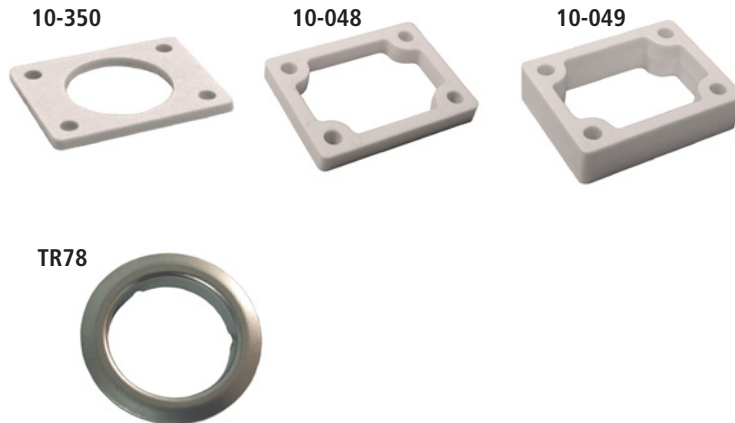
- 10-350 1/8" thick plastic spacers
- 10-348 1/4" thick plastic spacers
- 10-349 1/2" thick plastic spacers

### Strikes

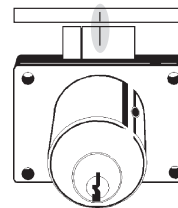
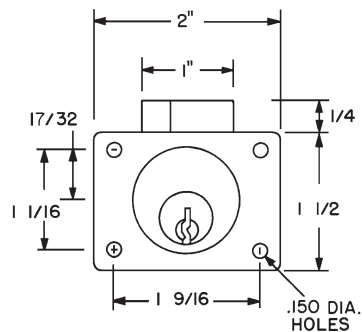
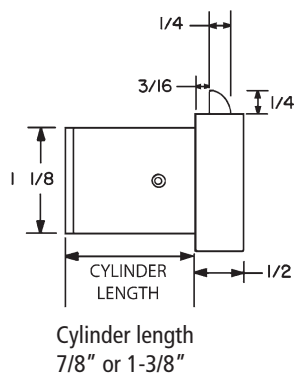
- Plastic bar strikes: 10-054, 10-055, 10-057, 10-058. Metal strikes: 10-056 12-1, 12-2, 12-3, 12-4, 999-STRIKE, L78ST-1, L78ST-2

### Trim Ring

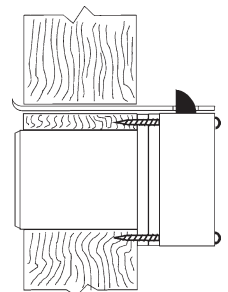
- TR78 trim ring



## DIMENSIONS | TYPICAL INSTALLATION



Note: Line up center mark on latch with center mark on strike for correct strike placement.



Note: Strike must be lined up so that dead lock portion of latch is depressed when drawer is closed.