

# 996 | 997

## R Series: Door & Drawer Latch Lock — 4-way Reversible

*Easily field reversible  
between door and  
drawer function*

### SPECIFICATIONS

**Function:** Spring latch  
**Keying:** Can be keyed together with other R Series locks  
**Reversible:** Easily reversible between door and drawer function  
**Rekeyable:** Easily rekeyable via set screw cylinder release mechanism  
**US Patent Nos:** 4,899,563; 7,874,189 B2  
**Body:** Zinc die cast  
**Cylinder:** Solid brass, pin tumbler  
**Barrel length:** 15/16" or 1-3/8"  
**Barrel diameter:** 7/8"  
**Latch projection:** 1/4"  
**Finish:** 26D or US4  
**Packaged:** Packed 10 per box

### KEYING INFORMATION

**Keyway:** R Series (equivalent to CCL R1 system)  
**Keys:** Includes 2 keys per lock  
**Stock keying:** KD/KA - 5 pin standard  
**Stock KA#:** 4T21579, 4T37526  
**Masterkeyed:** 5 pin standard, 6 pin available  
**Grand masterkeyed:** Available  
**Keyblank 5-pin:** KBR-5-NP (equivalent to CO106, 1003A)  
**Keyblank 6-pin:** KBR-6-NP (equivalent to L1003A)

### INCLUDED ACCESSORIES

**Strike:** 999-STRIKE (slotted lip strike)

### OPTIONAL ACCESSORIES

**Spacer:** WP24 (1/8" thick)  
**Trim ring:** TR1256  
**Through-bolt hardware:** ETS6 through-bolt plate



**DRAWER 996V**  
Vertical Hand (VH)

### 996 Drawer

**Function:** Drawer lock  
**Handing:** Available in the vertical or inverted position



**DRAWER 996I**  
Inverted Hand (IH)

### 997 Door

**Function:** Cabinet door lock  
**Handing:** Available in the left-hand or right-hand position



**DOOR 997L**  
Left Hand (LH)



**DOOR 997R**  
Right Hand (RH)

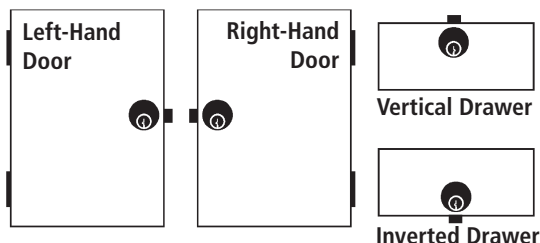
### AVAILABLE FINISHES



US26D

US4

### HANDING CHART



**WARNING:** This product can expose you to chemicals including chromium, which is known to the State of California to cause cancer and birth defects or other reproductive harm. For more information go to [www.P65Warnings.ca.gov](http://www.P65Warnings.ca.gov).



# 996 | 997

## R Series: Door & Drawer Latch Lock — 4-way Reversible

### OPTIONAL ACCESSORIES

#### Internal plastic spacers

- WP24 3/32" thick plastic spacers

#### Strikes

- 12-1, 12-2, 12-3, 12-4, 075

#### Trim Ring

- TR1256 trim ring



#### Through-bolt plate

External metal 1/8" or through-bolt plate allows for an attractive flush mounting of the cabinet lock face. Available in US3 or US26D finish.

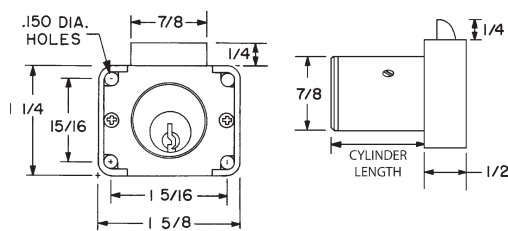
- ETS6 through-bolt plate, 1/8" thick



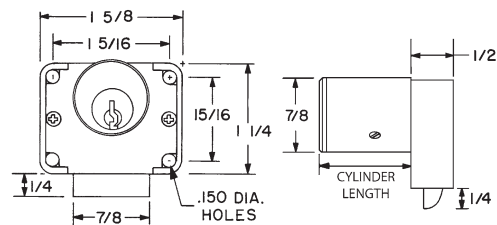
U.S. Patent No. D490,686

### DIMENSIONS

#### 996 Drawer Lock

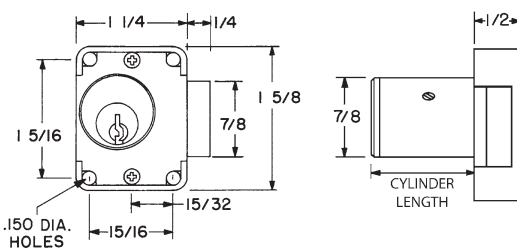


996V VERTICAL HAND

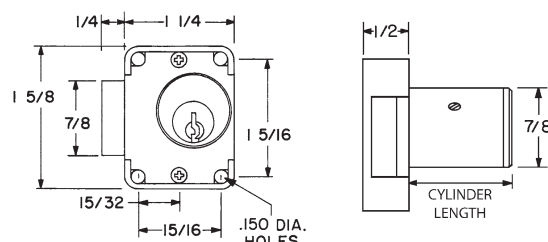


996I INVERTED HAND

#### 997 Cabinet Door Lock



997L LEFT HAND



997R RIGHT HAND