

L78 SERIES

S Series: Schlage C Keyway Latch Lock

Easily field reversible between door and drawer functions.

SPECIFICATIONS

Reversible: Easily field reversible between door and drawer functions

Rekeyable: Easily rekeyable via set screw cylinder release mechanism

US Patent Nos: 4,899,563; 7,874,189 B2

Body: Zinc die cast

Cylinder length: 1-1/8" or 1-3/8"

Barrel diameter: 1-1/8"

Finish: 26D or US3

Packaged: Packed 10 per box

INCLUDED ACCESSORIES

For 1-1/8" barrel length locks:

10-351 plastic spacers (qty 2)

L78ST-1 lipped strike

For 1-3/8" barrel length locks:

L78ST-2 lipped strike

L78 KEYING INFORMATION

Keying: Can be keyed together with other Schlage C Keyway locks

Keyway: Schlage C keyway

Keys: Includes 2 keys per lock

Cylinder: Solid brass, pin tumbler

Stock keying: KD/KA - 5 pin standard

Stock KA#: 101, 102

Masterkeying: 5 pin standard, 6-pin available

Grand masterkeying: Available

Keyblank 5-pin: KBSC-5

Keyblank 6-pin: KBSC-6

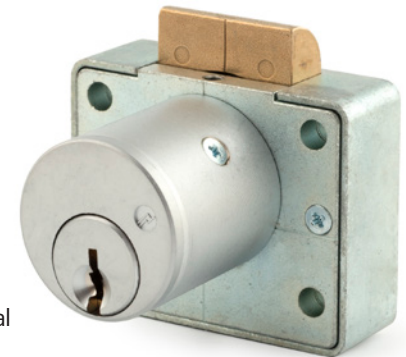
OPTIONAL ACCESSORIES

Trim collar: TR78 trim ring

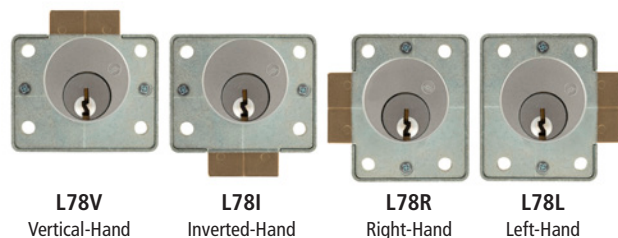
Spacer: 10-351 spacer (1/8" thick)

L78

Function: Latch lock



L78V
Drawer Vertical



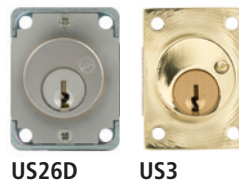
L78V
Vertical-Hand

L78I
Inverted-Hand

L78R
Right-Hand

L78L
Left-Hand

AVAILABLE FINISHES



US26D

US3

INCLUDED ACCESSORIES



10-351 internal spacers
For a flush fit on varying material thicknesses



L78ST Matching lip strike



WARNING: This product can expose you to chemicals including chromium, which is known to the State of California to cause cancer and birth defects or other reproductive harm. For more information go to www.P65Warnings.ca.gov.



**OLYMPUS
LOCK** INC.

L78 SERIES

S Series: Schlage C Keyway Latch Lock

*Easily field reversible
between door and
drawer functions.*

OPTIONAL ACCESSORIES - See our website for a complete list of optional components.

Internal Plastic Spacers

- 10-351 1/8" thick plastic spacers
- 10-348 1/4" thick plastic spacers
- 10-349 1/2" thick plastic spacers

10-351



10-048



10-049



TR78



Strikes

- Metal strikes: L78ST-2

Trim Ring

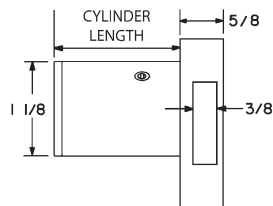
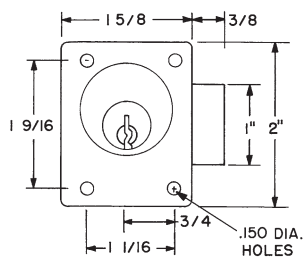
- TR78 trim ring



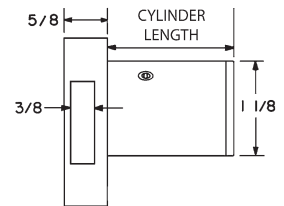
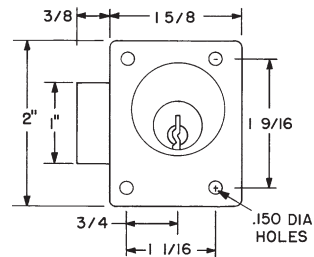
L78ST lip strike

DIMENSIONS

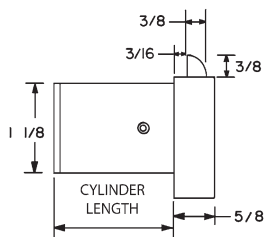
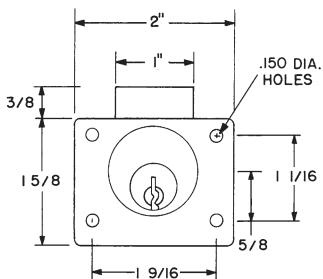
L78L - Left Hand (LH)



L78R - Right Hand (RH)



L78V - Vertical Hand (VH)



L78I - Inverted Hand (RH)

