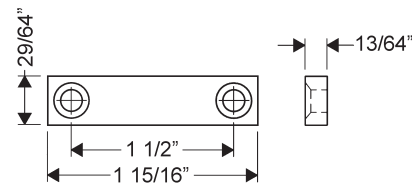
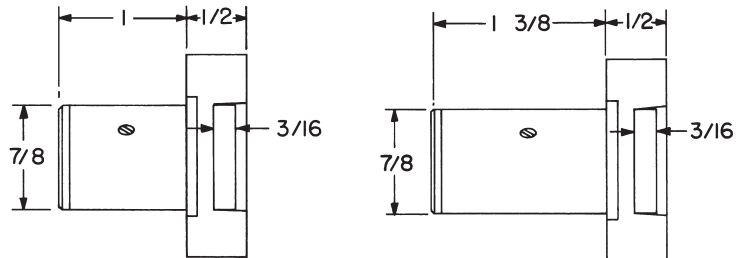
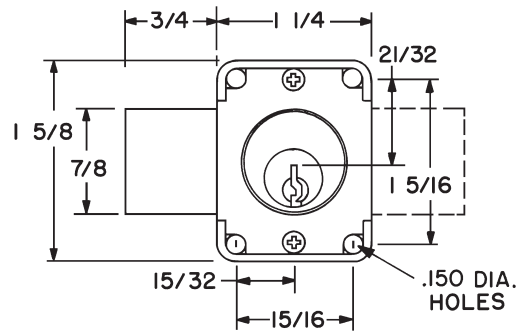
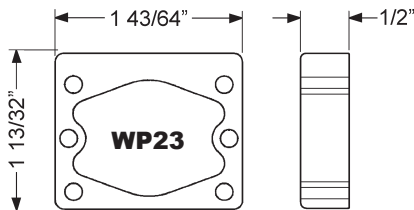
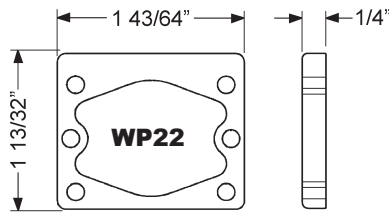
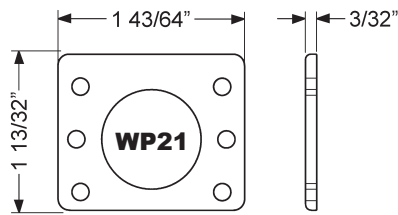
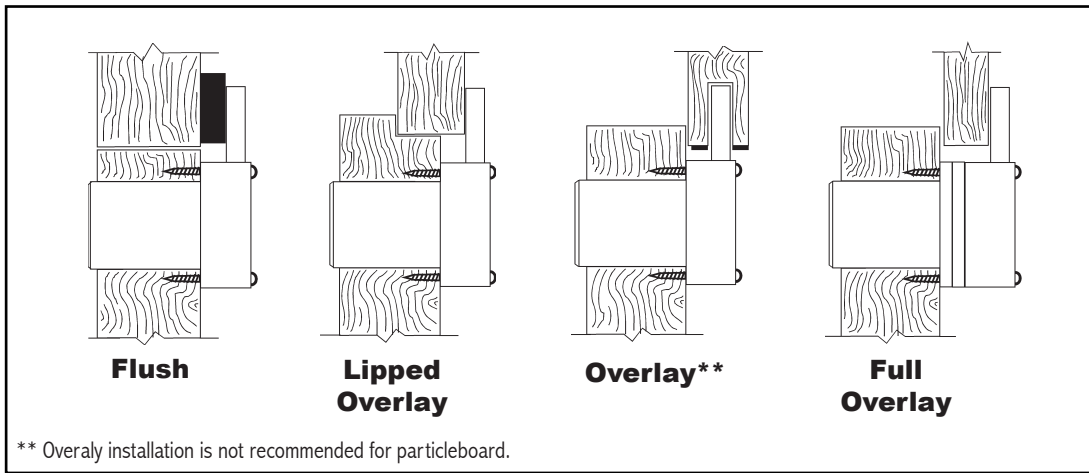


Installation Instructions

100M

Typical Installation



56-1 - bar strike

Note: Use of spacers and strikes depends on application and material thickness.

| | | | | | |
|---|--|------------------------------|----------------------------|---------------------------------|--|
| Title Installation instructions for 100M series cabinet door lock | | | | | |
| Series 100M | Barrel Length 7/8" or 1-3/8" | Bolt type Deadbolt | Mounting Surface | Revision Date 11/2013 | |