

Product Data Sheet

200DW 1-5/8" Series

N Series: National Keyway

Drawer Locks with 1-5/8" Barrel Length



WP21 internal spacers
For a flush fit on varying material
thicknesses



12-3
Medium angle strike included



200DW 1-5/8" Series



N Series: National Keyway

Drawer Locks with 1-5/8" Barrel Length

200DW 1-5/8" Drawer Lock

Rekeyable: Easily rekeyable via set-screw cylinder removal mechanism

Testing: Testing: Passed ANSI/BHMA A156.11 Grade 1 cycle testing. All other requirements of ANSI/BHMA A156.11, no less than a Grade 2 performance was attained.

US Patent Nos: 4,899,563; 4,920,774

Body: Zinc die cast

Bolt: Brass, 3/4" projection

Barrel length: 1-5/8"

Barrel diameter: 7/8"

Finish: US26D (satin chrome)

Cylinder: National "D4291" Keyway 4 or 5 pin

Stock keying: KD or KA - 4 pin standard, stock KA# 101, 103, 107, 915

Master keying: 5 pin standard, KA/MK or KD/MK, Grand Master Keyed

Key-retaining function: Specify 200KI for inverted drawer or 200KV for vertical drawer function.

Accessories

Includes:

- 12-3-1 bar strike

Available separately:

- WP21 plastic internal spacers
- 12-1 small angle strike
- 12-2 heavy duty angle strike
- 56-1 bar strike
- 07S slotted strike
- ETS2 - External trim spacer
- ETST2 - External trim spacer template

Reinforcing trim spacer (optional)

- External metal 1/4" trim spacer allows for an attractive flush mounting of the cabinet lock face
- Increases security of installation through reinforcement of cabinet face and direct connection of lock mounting screws to External Trim Spacer's binder posts
- Available in US3 and US26D finishes
- Includes mounting screws

Template for reinforcing trim spacer (optional)

- Allows for proper mounting hole placement of External Trim Spacer
- Can be used as a 1/8" shim spacer
- Available in US3 and US26D finishes

Reinforcing Trim Spacer

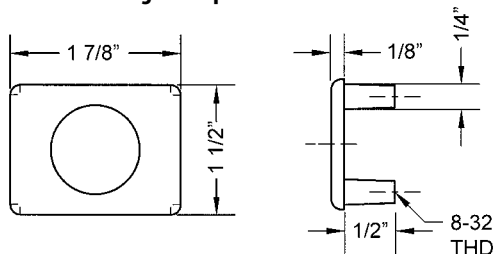


Reinforcing Trim Spacer Template

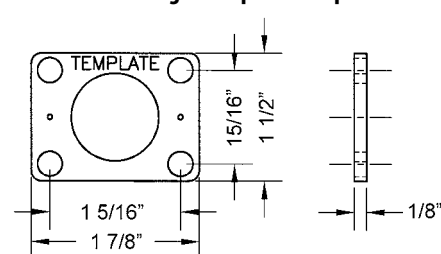


U.S. Patent No. D490,686

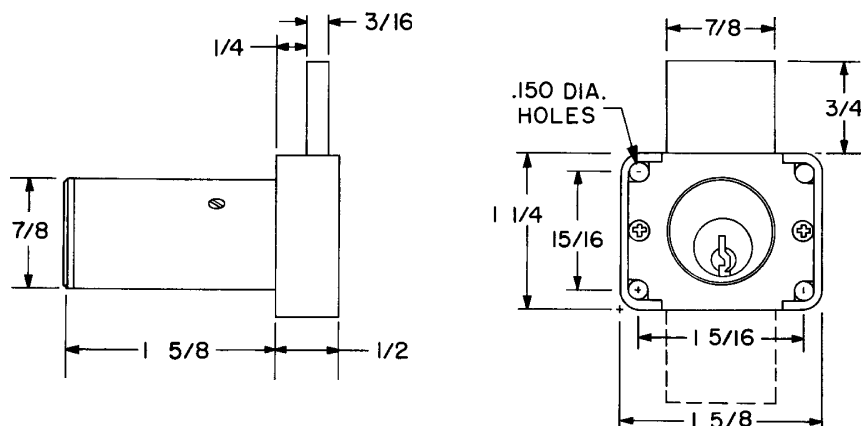
#ETS2 Reinforcing Trim Spacer



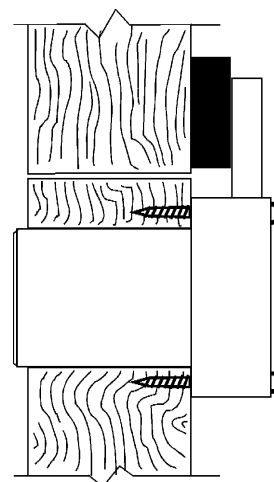
#ETST2 Reinforcing Trim Spacer Template



200DW 1-5/8" Dimensions



Typical Installation



200DW - side view