

# L20V

## N Series: Heavy Duty Drawer Latch Lock

### SPECIFICATIONS

**Function:** Heavy duty spring latch

**Keying:** Can be keyed together with other N Series locks

**Function:** Heavy duty spring latch for high-use applications

**Rekeyable:** Easily rekeyable via set screw cylinder release mechanism

**Body:** Zinc die cast

**Cylinder:** Solid brass, pin tumbler

**Cylinder length:** 15/16" or 1-3/8"

**Barrel diameter:** 7/8"

**Latch projection:** 5/16"

**Finish:** US26D

**Packaged:** Packed 10 per box

### KEYING INFORMATION

**Keyway:** N Series (equivalent to National D4291 4-pin or D4292 5-pin system)

**Keys:** Includes 2 keys per lock

**Stock keying:** KD/KA - 4 pin standard

**Stock KA#:** 101, 103, 107, 915

**Masterkeyed:** 5 pin standard

**Grand masterkeyed:** Available

**Keyblank 4-pin:** KBN-4-NP

(equivalent to NA14, 1069L)

**Keyblank 5-pin:** KBN-5-NP

(equivalent to NA12, 1069LA)

### INCLUDED ACCESSORIES

**Strike:** 999-STRIKE (slotted lip strike)

### OPTIONAL ACCESSORIES

**Spacers:** WP21 spacer (3/32" thick), WP22 spacer (1/4" thick), WP23 spacer (1/2" thick)

**Strikes:** 12-1, 12-2, 12-3, 12-5, 12-4, 56-1, 075

**Trim collars:** TR1256

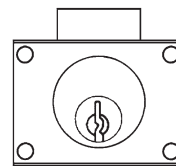
**Through-bolt hardware:** ETS2 trim plate, ETS2-PL trim pull and ETST2 template

## L20V

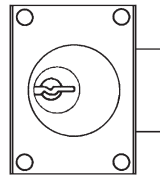
**Function:** Cabinet drawer latch lock



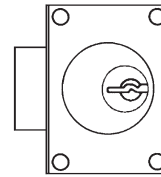
US26D finish



Vertical-hand  
(VH) drawer



Left-hand  
(LH) door



Right-hand  
(RH) door



includes  
999-STRIKE



**WARNING:** This product can expose you to chemicals including chromium, which is known to the State of California to cause cancer and birth defects or other reproductive harm. For more information go to [www.P65Warnings.ca.gov](http://www.P65Warnings.ca.gov).



**OLYMPUS  
LOCK** INC

# L20V

## N Series: Heavy Duty Drawer Latch Lock

**OPTIONAL ACCESSORIES** - See our website for a complete list of optional components.

### Internal plastic spacers

- WP20 3/16" thick plastic spacer
- WP21 3/32" thick plastic spacers
- WP22 1/4" thick plastic spacers
- WP23 1/2" thick plastic spacers

### Strikes

- 12-1, 12-2, 12-3, 12-4, 12-5, 075

### Trim Ring

- TR1256 trim ring



### Through-bolt plate

External metal 1/8" or 1/4" through-bolt plate allows for an attractive flush mounting of the cabinet lock face. Available in US3 or US26D finish.

- ETS2-125 through-bolt plate, 1/8" thick
- ETS2-250 through-bolt plate, 1/4" thick

### Through-bolt plate template

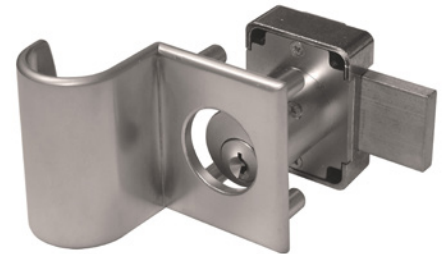
Allows for proper mounting hole placement of through-bolt plate. Can be used as a 1/8" shim spacer. Available in US3 and US26D finish.

- ETST2 through-bolt plate template

ETS2  
Through-bolt plate

ETST2  
Through-bolt plate  
template

ETS2-PL  
Through-bolt pull



U.S. Patent No. D490,686

## DIMENSIONS | TYPICAL INSTALLATION

