

New Products

Institutional grade cabinet locks.

N Series - National Keyway Padlocks

PN50 Series

Keying: Can be keyed together with other N Series locks
Rekeyable: Easily rekeyable in minutes
Body: Extruded brass
Locking: Steel ball bearing heel and toe
Body width: 2" (50 mm)
Body height: 1-7/8" (47 mm)
Shackle: Hardened molybdenum steel
Finish: BHMA 606 Satin Brass (US4)
Shackle opening: PN50 = 1-15/32"
 PN50LS = 2-1/2"



PN50

PN50LS

US19 (622) Flat Black Finish

N Series

US19 flat black finish available on the following lock products:

100DR, 100B, 100M

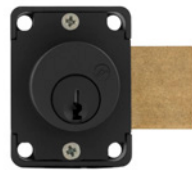
7/8" barrel length
 Stock KD or KA# 101, 103, 107, 915
 Non stock, custom or master keyed

200DW, 200B, 200M

7/8" or 1-3/8" barrel length
 Stock KD or KA# 101, 103, 107, 915
 Non stock, custom or master keyed

SFIC 721DR / 721DW

US19 flat black finish now available on the 721DR and 721DW lock bodies for small format interchangeable core cylinders.



US19/622
Flat Black

Available on
100, 200 and
721 series
locks.

Cabinet Hardware

EC-2-26D

Elbow catch distributor pack in US26D finish. Includes latch, strike and 3 screws. Packed each.



SB-3-26D

Slide bolt distributor pack in US26 finish, 3" length. Includes slide, strikes and screws. Packed each.



Rim Cylinder Conversion Kit

SLT Series

Conversion Kit: Allows you to convert a US rim cylinder into a latch or deadbolt cabinet lock
Function: Will work for cabinet doors or drawers
US Patent: Pending
Body: Zinc die cast
Barrel diameter: 1-9/64"
Cylinder length: Determined by provided rim cylinder screws and tailpiece
Finish: US26D satin chrome
Rim cylinder: Accepts most major manufacturers rim cylinders. Shown with SALTO G9B1 GEO US rim cylinder.



SLT-01



SLT-02



Salto, XS4 and GEO are registered tradenames of Salto Systems S.L.

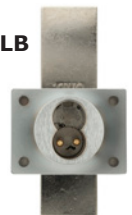
721 Series Extended Bolt

Extended Bolt

Now available with reversible extended bolt that works for both doors and drawers. Extends overall bolt length to 3-3/4" or an extra 3/4" on both ends.

Available for doors and drawers. This bolt will also work in 1-1/4 and 1-3/8" barrel length locks as well as in key-retaining applications.

721DW-LB



721DR-LB

Strikes

12-5-SS

Heavy duty slotted strike, stainless steel finish, 2" x 1-1/4"

