

Strikes

For Olympus Cabinet Locks

12-1

Type: Angle strike
Finish: 26D or US^A



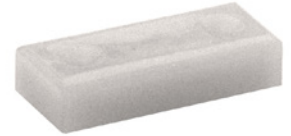
10-054

Type: Bar strike, 1/4" thick
Material: White nylon



10-058

Type: Bar strike, 3/8" thick
Material: White nylon



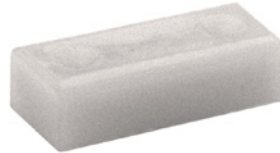
56-1

Type: Bar strike
Finish: 26D or US^A



10-055

Type: Bar strike, 1/2" thick
Material: White nylon



10-052

Type: Slotted bar strike
Finish: 26D



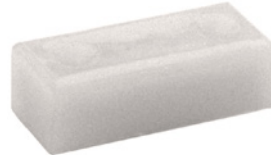
12-3

Type: Medium angle strike
Finish: 26D or US^A



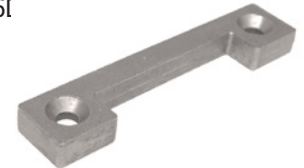
10-057

Type: Bar strike, .65" thick
Material: White nylon



10-056

Type: Notched strike
Finish: 26I



12-2

Type: Heavy duty angle strike
Finish: 26D

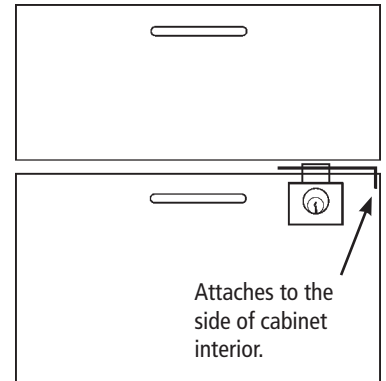


12-4

Type: Frameless drawer strike
Finish: Zinc plated



Our new frameless drawer strike provides a locking point when there is no frame between drawers. This strike is mounted on the side of the cabinet frame and provides a locking point when no other locking points are available.



12-5

Type: Heavy duty slotted strike
Finish: SS (Stainless Steel)



WARNING: This product can expose you to chemicals including chromium, which is known to the State of California to cause cancer and birth defects or other reproductive harm. For more information go to www.P65Warnings.ca.gov.



**OLYMPUS
LOCK** INC

Strikes

For Olympus Cabinet Locks

STRIKES

725-SP-MD

Use with: 725 Mortise Deadbolt
Finish: US3 or Stainless Steel



725-SP-ML

Use with: 725 Mortise Latch
Finish: US3 or Stainless Steel



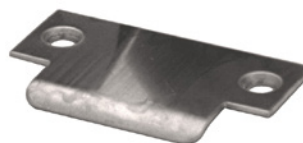
725-SP-RD

Use with: 725 Rim Deadbolt
Finish: US3 or Stainless Steel



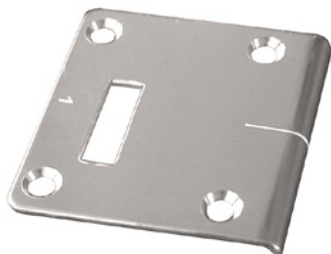
725-SP-RL

Use with: 725 Rim Latch
Finish: US3 or Stainless Steel



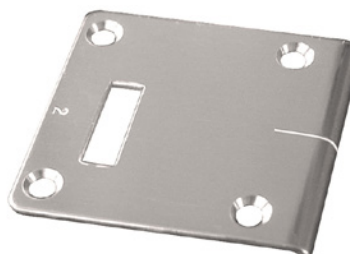
850-210

Use with: 850 1-1/8" barrel length
Finish: US3



850-211

Use with: 850 1-3/8" barrel length
Finish: US3



L78ST-1

Use with: L78 1-1/8"
Finish: US3



L78ST-2

Use with: L78 1-3/8"
Finish: US3

999-STRIKE

Use with: 996, 997, 998, 999
Finish: US3

